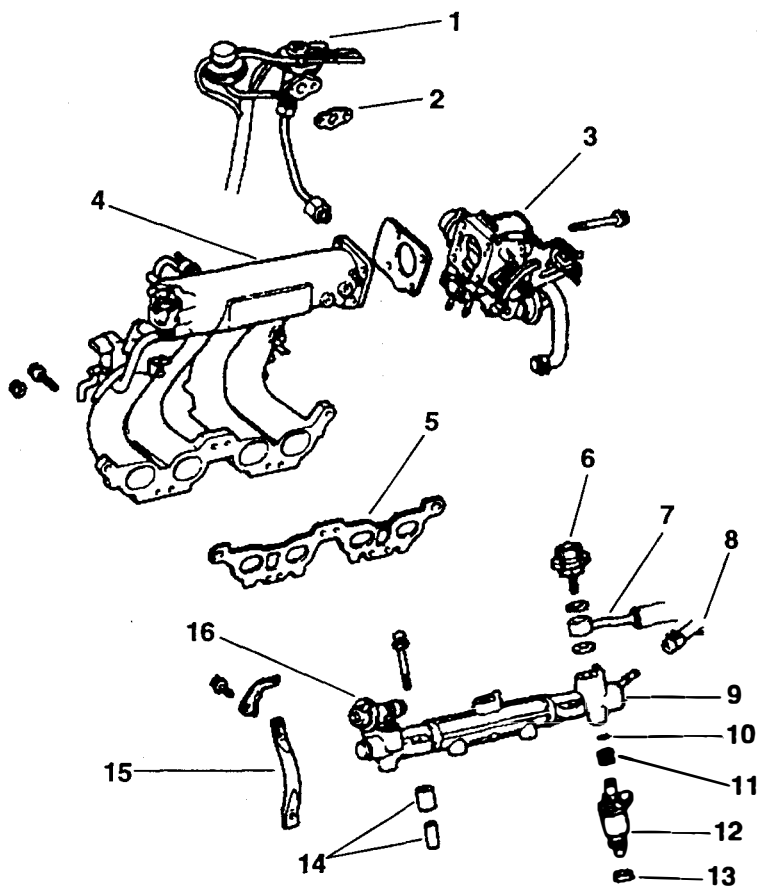


# THROTTLE BODY AND INJECTOR SERVICE IMPORT APPLICATIONS

50-777



**GENERAL EXPLODED VIEW**  
Actual units may differ from illustration.

## GENERAL INSTRUCTIONS

To reduce the risk of fire, it is necessary to relieve the fuel system pressure before disconnecting fuel lines.

1. Disable fuel pump.
2. Start engine.
3. After engine stalls, crank for five to 10 seconds.
4. Turn off ignition.
5. Disconnect negative battery cable.

## DISASSEMBLY INSTRUCTIONS

Using the exploded view as a guide, disassemble far enough to permit cleaning and inspection. Follow manufacturer's procedures, if required, to access the fuel rail and throttle body. Note position of injector connectors prior to disconnecting for reassembly.

Remove fuel rail retaining bolts. Remove fuel rail and injectors as an assembly. Twist each injector, then pull gently to separate the injector from the fuel rail. Remove injector o-rings and fuel injector insulator as required. Note special instructions.

## SPECIAL DISASSEMBLY INSTRUCTIONS

Use care not to drop injectors during service. Replace injector if dropped.

Do not disassemble throttle shaft assembly.

## NOMENCLATURE

1. EGR Valve	5. Intake Manifold Gasket	9. Fuel Rail	13. Insulator
2. EGR Gasket	6. Pulsation Dampener	10. O-ring	14. Spacer
3. Throttle Body	7. Fuel Inlet Line	11. Grommet	15. Manifold Support
4. Intake Manifold	8. Fuel Return Line	12. Fuel Injector	16. Fuel Pressure Regulator

## CLEANING INSTRUCTIONS

Cleaning must be done with unit disassembled.

Soak parts to soften and remove foreign material in a cold immersion cleaner or other suitable solvent (for a maximum of 15 minutes).

Be sure all passages are cleaned of foreign deposits. Use compressed air to blow out all passages.

Do not soak or use cleaner on electrical or rubber parts such as the idle air control valve or throttle position sensor.

**DO NOT** immerse or soak throttle body assembly in liquid cleaner as the cleaner may wash away ball bearing grease and damage throttle shaft seals.

## REASSEMBLY INSTRUCTIONS

Reassemble in reverse order of disassembly. Pressurize fuel system and check for leaks. Note special reassembly instructions.

## SPECIAL REASSEMBLY INSTRUCTIONS

Apply silicone oil to all o-rings to ease installation.

To prevent damage to injector o-ring, insert injector into fuel rail squarely and carefully. Install injectors into fuel rail first, then install them into the intake manifold.

Position injector connectors in the same position as disassembly.

Tighten fuel rail bolts in sequence and torque all bolts to specifications.

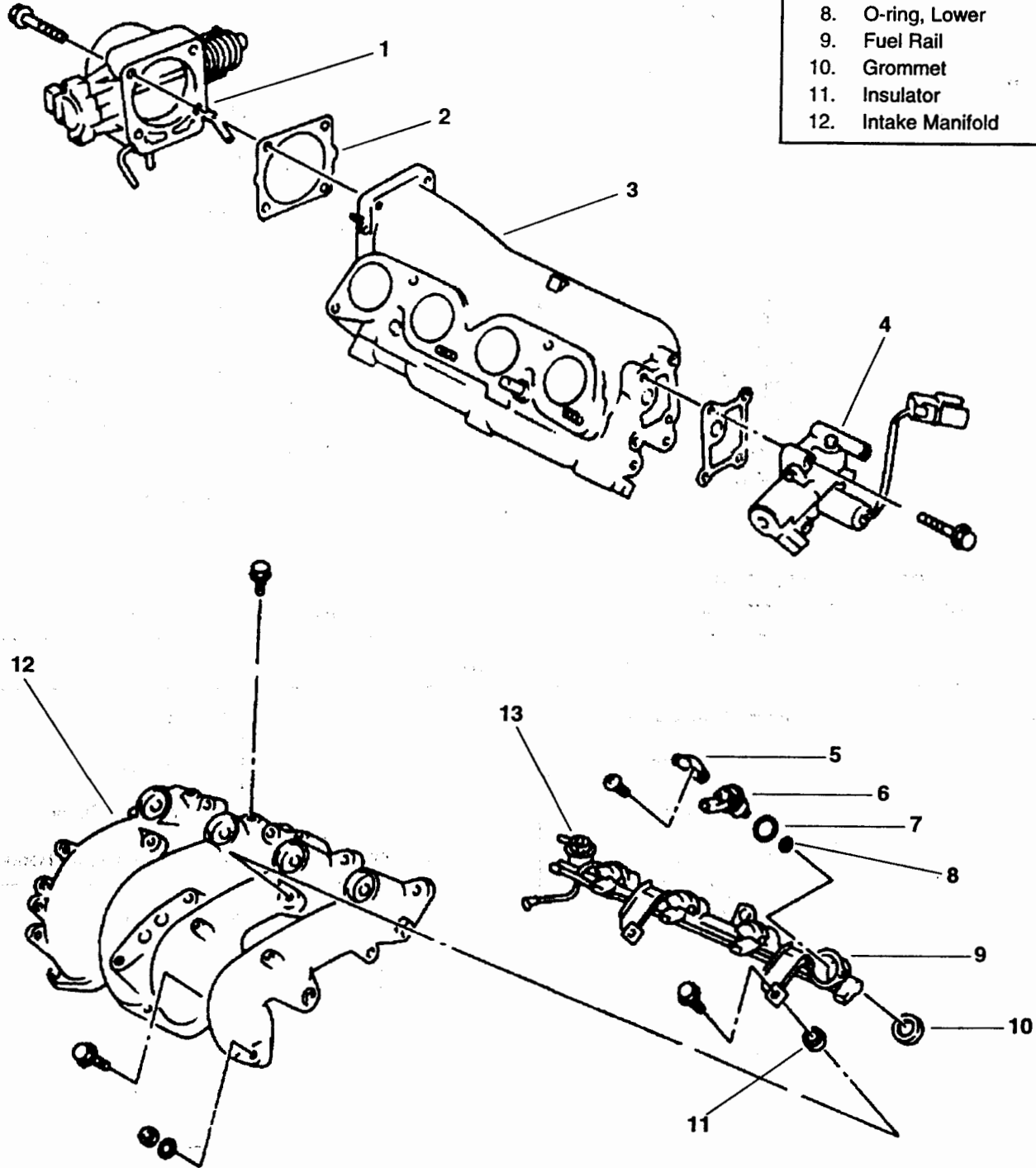
# THROTTLE BODY AND INJECTOR SERVICE IMPORT APPLICATIONS

50-777

**GENERAL EXPLODED VIEW**  
Actual units may differ from illustration.

## NOMENCLATURE

1. Throttle Body
2. Throttle Body Gasket
3. Intake Plenum
4. Idle Air Valve
5. Injector Retainer
6. Fuel Injector
7. O-ring, Upper
8. O-ring, Lower
9. Fuel Rail
10. Grommet
11. Insulator
12. Intake Manifold



**SEE REVERSE SIDE FOR INSTRUCTIONS**