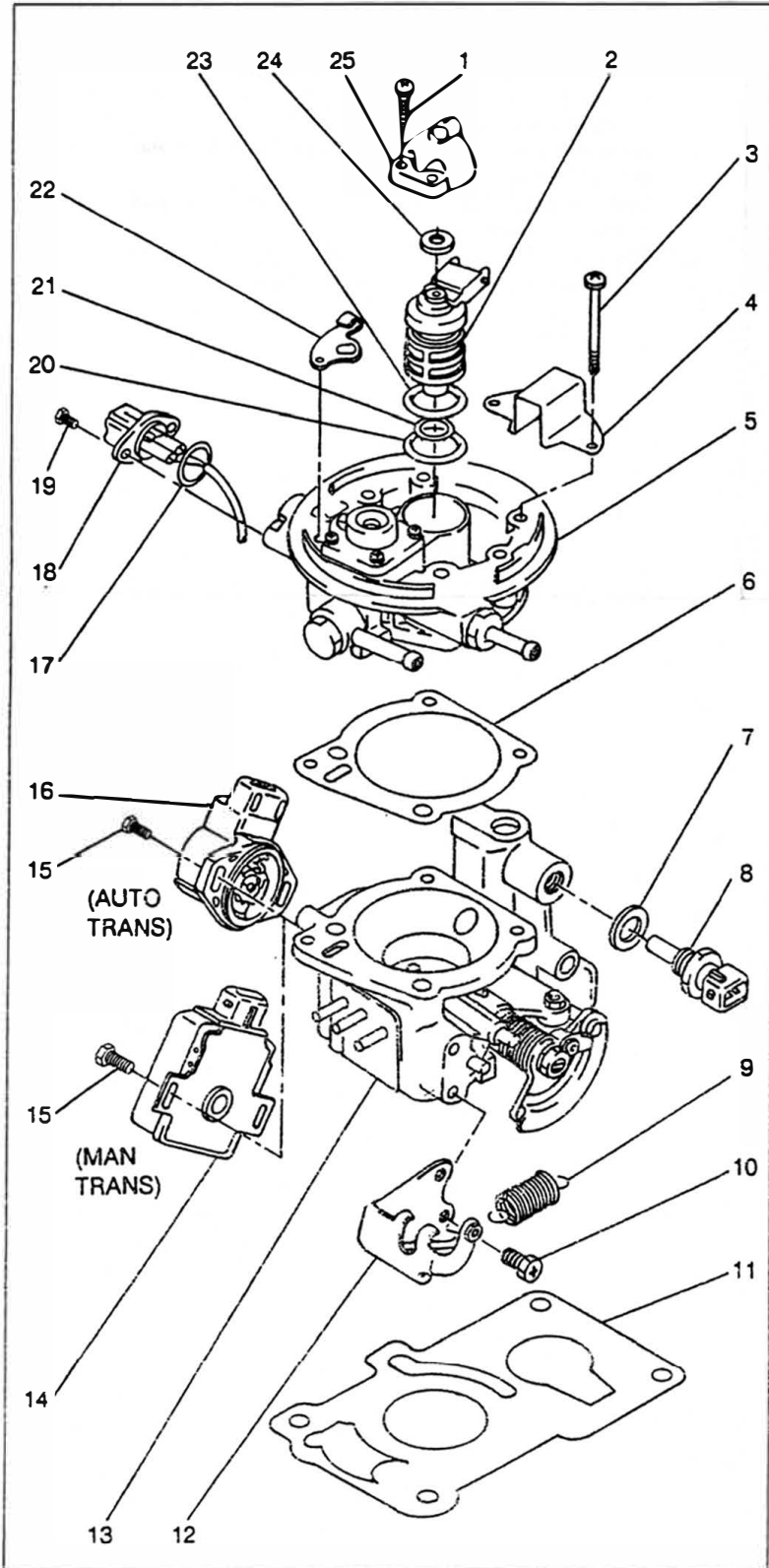


## INSTRUCTION SHEET

### OFF VEHICLE THROTTLE BODY INJECTION (TBI) SERVICE GEO METRO AND SUZUKI SWIFT '89-91

GENERAL EXPLODED VIEW  
ACTUAL UNITS MAY VARY



#### 1. PREPARATION.

##### WARNING

To reduce the risk of fire, it is necessary to relieve the fuel system pressure before disconnecting fuel lines.

- A. Disconnect fuel pump. (Follow Manufacturers service procedures.)
- B. Start engine.
- C. After engine stalls, crank for 5-10 seconds.
- D. Turn ignition off.
- E. Remove TBI assembly.

#### 2. DISASSEMBLY.

- A. Remove the screws (19) and pull fuel injector connector (18) out of the metering body (5).
- B. Remove the o-ring (17).
- C. Remove the screws (1) and lift cover (25) straight up. Remove the upper insulator (24).
- D. Remove the clamp (22) and gently lift injector (2) out of the metering body.
- E. Remove o-rings (20 and 23) and lower insulator (21) from injector assembly.
- F. Remove the screws (3), plate (4) and lift metering body (5) from throttle body (13).
- G. Remove the gasket (6).
- H. Scribe a mark on the mounting flanges for reassembly and remove the screws (15) and throttle position sensor (TPS) (14 or 16) from throttle body.
  - I. Screw the coolant temperature sensor (CTS) (8) out of throttle body by turning counterclockwise. Remove CTS gasket (7).
  - J. Remove the spring (9).
  - K. Remove the screws (10) and throttle bracket (12) from throttle body.
  - L. Remove the gasket (11).

#### 3. CLEANING.

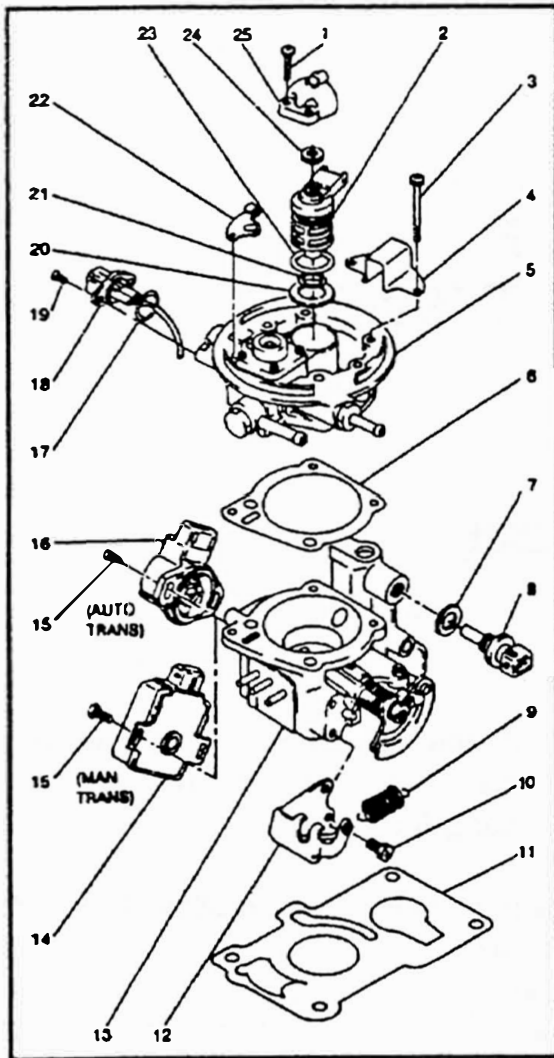
##### CAUTION

Cleaning must be done with unit disassembled. Do not immerse throttle body in any type of cleaning solvent. Damage to the shaft seals and bearings will result.

Do not use solvent or cleaner on cap and harness, injector, pressure regulator, temperature sensor, or throttle position sensor.

- A. Clean passages and parts with a spray carburetor cleaner. Be sure to remove all carbon deposits.
- B. Wash off with suitable solvent and use compressed air to blow out all passages.

(Over)



#### 4. REASSEMBLY.

- A. Install the gasket (11).
- B. Position the throttle bracket (12) on the throttle body (13) and secure with the screws (10).
- C. Install the throttle spring (9).
- D. Install the CTS gasket (7) and screw the CTS (8) clockwise into the throttle body.
- E. Position the TPS (14 or 16) according to the scribe marks and secure in place with the screws (15).
- F. Install the gasket (6).
- G. Position metering body (5) into the throttle body, install plate (4) and secure with the screws (3).
- H. Coat o-rings (20 and 23) with silicone oil. Install o-rings and lower insulator (21) onto injector (2).
  - I. Align terminals and push injector (2) straight down with suitable tool to seat into the metering body (5) and secure in place with clamp (22).
- J. Position the upper insulator (24) and cover (25) and secure in place with the screws (1).
- K. Coat o-ring (17) with silicone oil and install onto fuel injector connector (18).
- L. Position fuel injector connector (18) into metering body and secure in place with the screws (19).