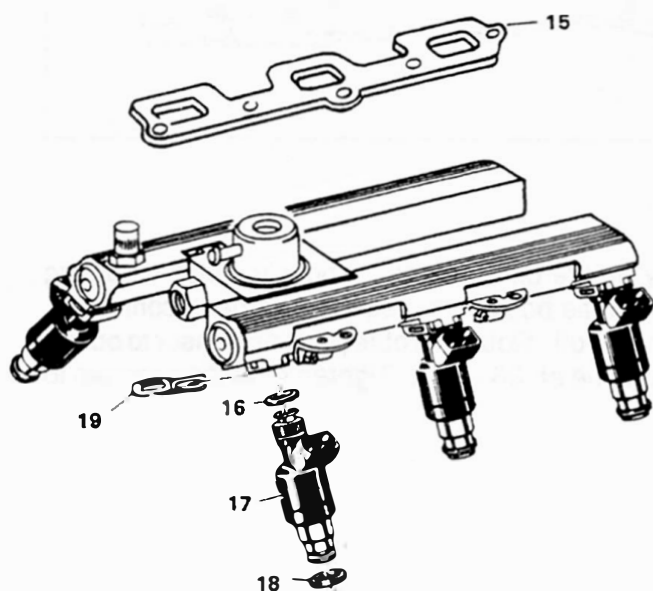
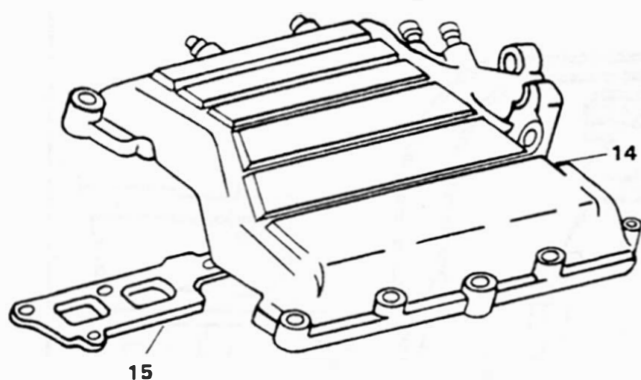
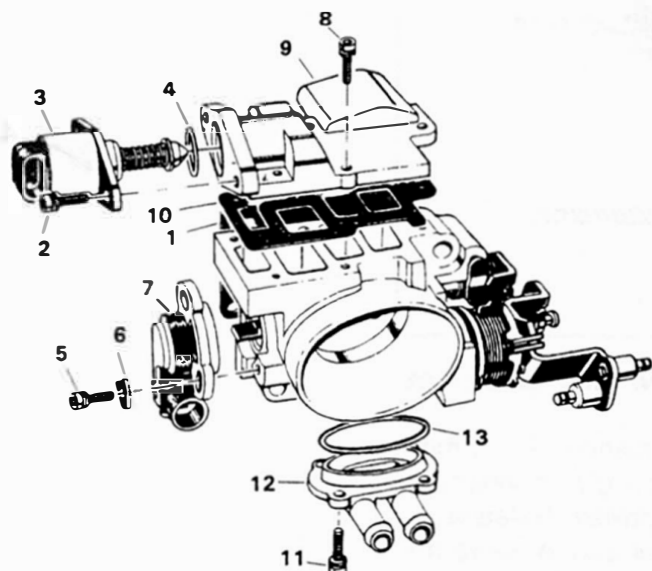


GENERAL EXPLODED VIEW

Actual units may differ from illustration



GENERAL INSTRUCTIONS

To reduce the risk of fire, it is necessary to relieve the fuel system pressure before disconnecting fuel lines.

1. Disconnect fuel pump.
2. Start engine.
3. After engine stalls, crank for five to 10 seconds.
4. Turn off ignition.
5. Remove throttle body assembly.

DISASSEMBLY INSTRUCTIONS

Using the exploded view as a guide, the numerical sequence may generally be followed to disassemble unit far enough to permit cleaning and inspection. Note special instructions.

SPECIAL DISASSEMBLY INSTRUCTIONS

Throttle position sensor: Scribe a mark on the throttle position sensor and throttle body for proper reassembly reference.

Do not disassemble the throttle shaft assembly.

NOMENCLATURE

| | |
|--|--|
| 1. Gasket, flange | 10. Gasket, idle air/vacuum signal assy. |
| 2. Screw and washer, IAC valve (2) | 11. Screw and washer, coolant cover (4) |
| 3. Idle air control valve (IAC) | 12. Coolant cover |
| 4. Gasket/O-ring, IAC valve | 13. O-ring, coolant cover |
| 5. Screw and washer, TPS (2) | 14. Intake plenum |
| 6. Retainer, TPS (2) | 15. Gasket, intake plenum (2) |
| 7. Throttle position sensor (TPS) | 16. O-ring, injector upper (6) |
| 8. Screw and washer, idle air/vacuum signal assembly (5) | 17. Fuel injector assembly |
| 9. Idle air/vacuum signal assembly | 18. O-ring, injector lower (6) |
| | 19. Clip, injector retainer (6) |

CLEANING INSTRUCTIONS

Cleaning must be done with unit disassembled. Soak parts to soften and remove foreign material in a cold immersion cleaner or other suitable solvent (maximum of 15 minutes). Be sure all passages are cleaned of foreign deposits. Use compressed air to blow out all passages.

Do not soak or use cleaner on electrical or rubber parts such as the idle air control valve or throttle position sensor.

DO NOT immerse or soak throttle body assembly in liquid cleaner as the cleaner may wash away ball bearing grease and damage throttle shaft seals.

1992 UNITS: Do not remove the factory-applied DAG material from the throttle bore area where the throttle plate contacts the throttle bore.

REASSEMBLY INSTRUCTIONS

Reassemble in reverse order of disassembly. Note special reassembly instructions.

SPECIAL REASSEMBLY INSTRUCTIONS

O-rings: Apply silicone oil for ease of installation.

Idle air control valve: Reduce length of pintle before installation (see figure 1 on reverse side).

Throttle position sensor: Align scribed marks made on disassembly when mounting and adjust to specifications (see figure 2 on reverse side).

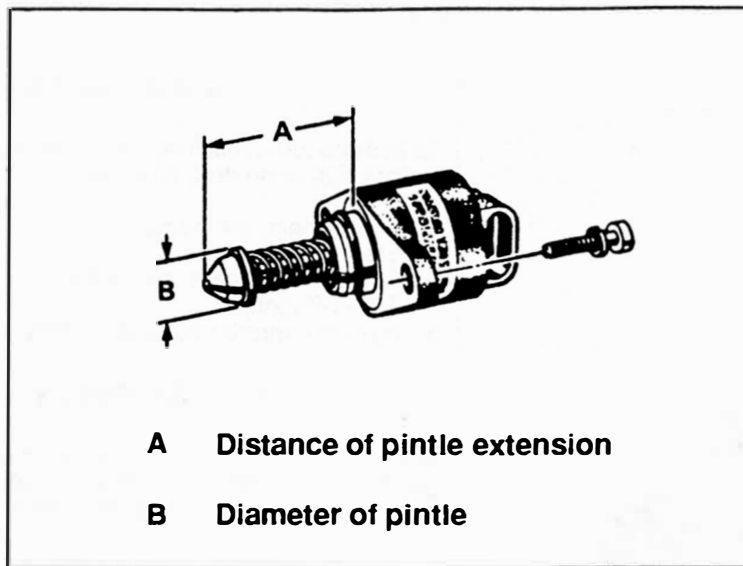


Figure 1. Idle Air Control Valve Measurement

Before installation of valve, check distance "A". If more than 1 1/8", it must be reduced by pushing in or compressing pintle spring and turning pintle clockwise. Release and realign spring or pintle. Install idle air control valve and tighten to 3.4Nm (30 in./lbs.).

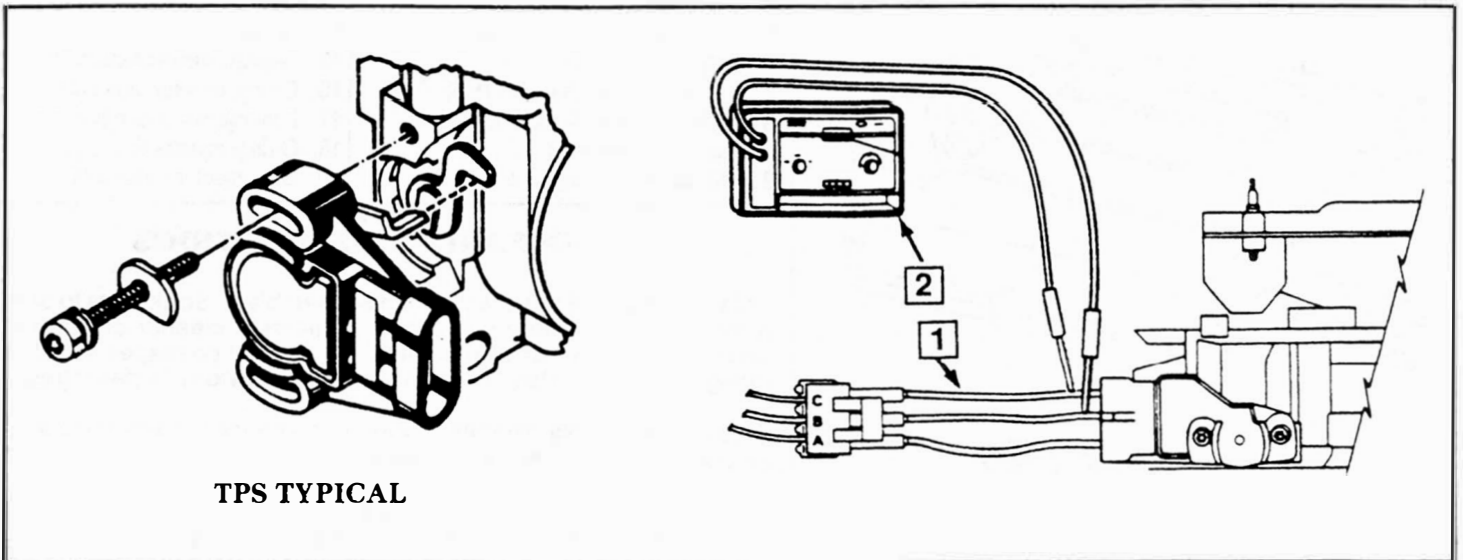


Figure 2. Throttle Position Sensor Adjustment

Align marks scribed on throttle position sensor and throttle body before disassembly, Loosely install mounting screws and retainers. Connect three jumper wires (1) between throttle position sensor and harness connector. Measure voltage (2) between terminals "B" and "C" with key on, engine off. Rotate throttle position sensor to obtain correct voltage setting (2.8L and 3.0L engines at .50 - .60; 3.8L engine at .36 - .44). Tighten mounting screws to 2.0Nm (18 in./lbs.).