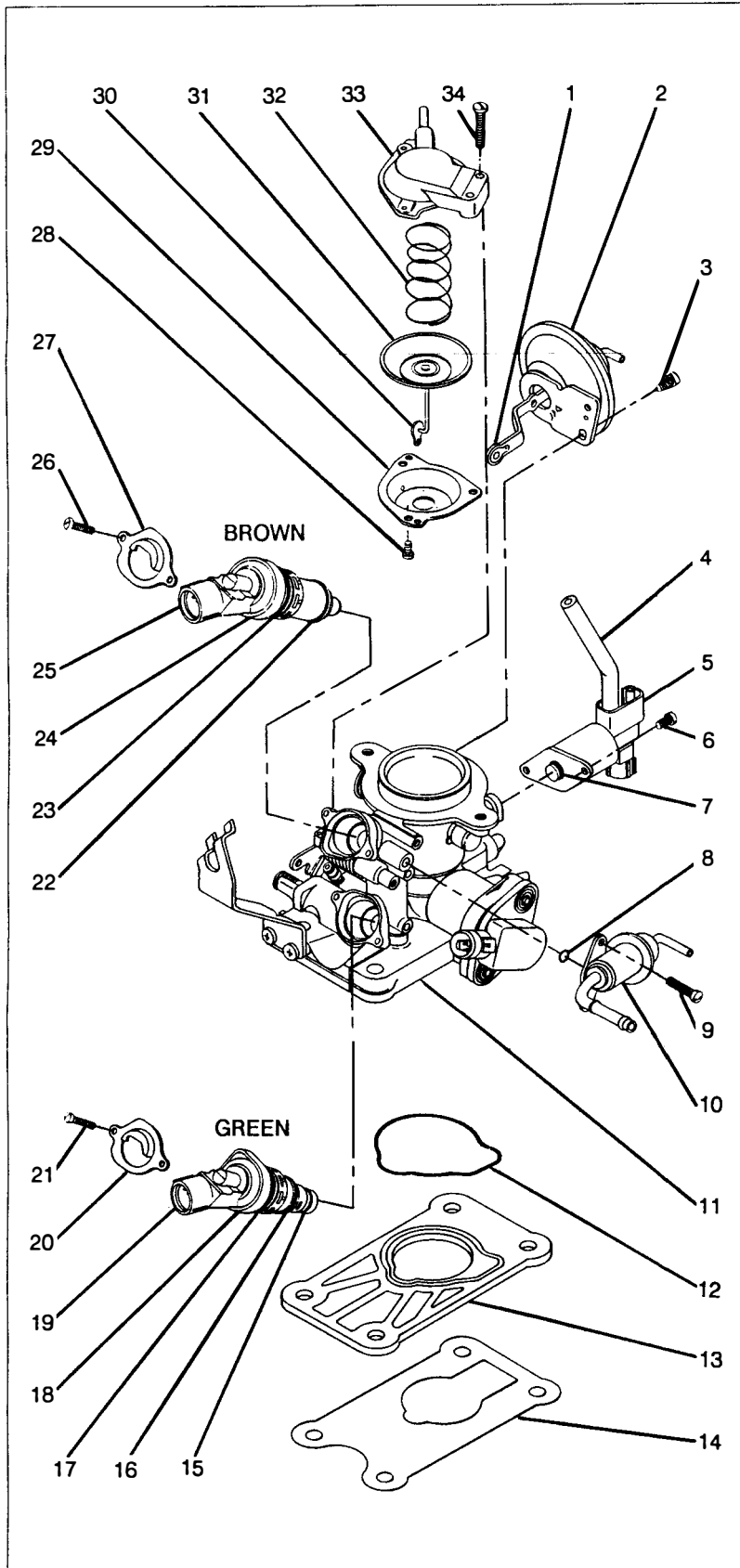


INSTRUCTION SHEET

OFF VEHICLE THROTTLE BODY INJECTION (TBI) SERVICE

1988-91 HONDA CIVIC, CRX W/KEIHIN TBI

GENERAL EXPLODED VIEW
ACTUAL UNITS MAY VARY



1. PREPARATION.

WARNING

To reduce the risk of fire, it is necessary to relieve the fuel system pressure before disconnecting fuel lines.

- A. Disconnect fuel pump. (Follow Manufacturers service procedures.)
- B. Start engine.
- C. After engine stalls, crank for 5-10 seconds.
- D. Turn ignition off.
- E. Remove TBI assembly.

2. DISASSEMBLY.

CAUTION

Do not remove the throttle position sensor, it is preset at the factory and sealed.

NOTE

Do not disassemble the throttle shaft assembly unless replacement is necessary.

- A. Remove the screws (9) securing pressure regulator (10). Remove the pressure regulator and o-ring (8).
- B. Remove the screws (6) securing tandem control solenoid (5).
- C. Remove the vacuum hose (4) from tandem control solenoid and tandem diaphragm assembly (2).
- D. Remove the tandem control solenoid (5) and o-ring (7).
- E. Disconnect the tandem diaphragm assembly lever (1) and remove the screws (3).
- F. Remove the tandem diaphragm assembly (2).
- G. Disconnect the dashpot shaft (30).
- H. Remove the screws (34) securing dashpot (33). Remove the dashpot.
- I. Carefully remove the screws (28) (the diaphragm is spring loaded) securing cover bracket (29) to the cover (33). Remove the diaphragm (31) and spring (32).
- J. Remove the screws (26) and main injector bracket (27).
- K. Remove the main injector (25) by lifting straight up and out.
- L. Remove the mounting rubber (24), lower o-ring (22) and upper o-ring (23) from main injector.
- M. Remove the screws (21) and auxiliary injector bracket (20).
- N. Remove the auxiliary injector (19) by lifting straight up and out.
- O. Remove the mounting rubber (18), lower o-ring (15), middle o-ring (16) and upper o-ring (17) from auxiliary injector.
- P. Remove the flange gasket (14), spacer (13), and o-ring (12) from throttle body (11).

3. CLEANING.

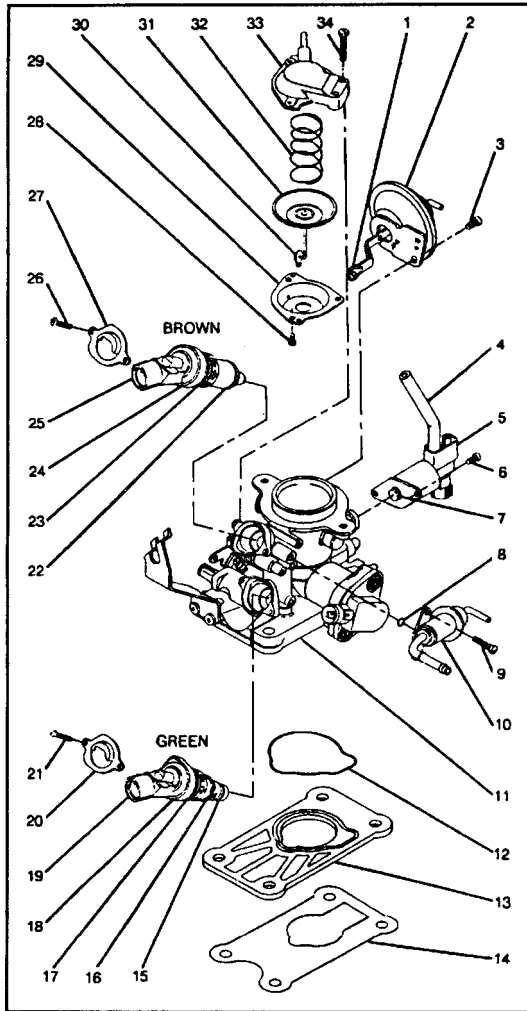
CAUTION

Cleaning must be done with unit disassembled. Do not immerse throttle body in any type of cleaning solvent. Damage to the shaft seals and bearings will result.

Do not use solvent or cleaner on injectors, tandem diaphragm assembly, pressure regulator, or throttle position sensor.

- A. Clean passages and parts with a spray carburetor cleaner. Be sure to remove all carbon deposits.
- B. Wash off with suitable solvent and use compressed air to blow out all passages.

(Over)



4. **REASSEMBLY.**

- A. Coat the o-rings with silicone oil and install upper o-ring (17), middle o-ring (16), lower o-ring (15) and mounting rubber (18) onto auxiliary injector (19).
- B. Align the auxiliary injector (green cap) and carefully push injector straight in until it seats.
- C. Position the auxiliary injector bracket (20) and secure in place with the screws (21).
- D. Coat the o-rings with silicone oil and install the upper o-ring (23), lower o-ring (22) and mounting rubber (24) onto main injector (25).
- E. Align the main injector (brown cap) and carefully push injector straight in until it seats.
- F. Position the main injector bracket (27) and secure in place with the screws (26).
- G. Position the diaphragm (31) and spring (32), slide cover bracket (29) over diaphragm shaft, compress spring and secure in place with the screws (28).
- H. Position the dashpot (33) and secure in place with the screws (34).
- I. Connect the dashpot shaft (30).
- J. Position the tandem diaphragm assembly (2) and secure in place with the screws (3). (The longer screw goes in the bottom.)
- K. Connect the tandem diaphragm assembly lever (1).
- L. Coat the o-ring with silicone oil and install o-ring (7) onto the tandem control solenoid (5).
- M. Position the tandem control solenoid and secure in place with the screws (6).
- N. Install the vacuum hose (4) onto tandem control solenoid and tandem diaphragm assembly.
- O. Coat the o-ring with silicone oil and install o-ring (8) onto pressure regulator (10).
- P. Position pressure regulator and secure in place with the screws (9).
- Q. Coat the o-ring with silicone oil and install o-ring (12), spacer (13), and flange gasket (14) onto throttle body (11).