

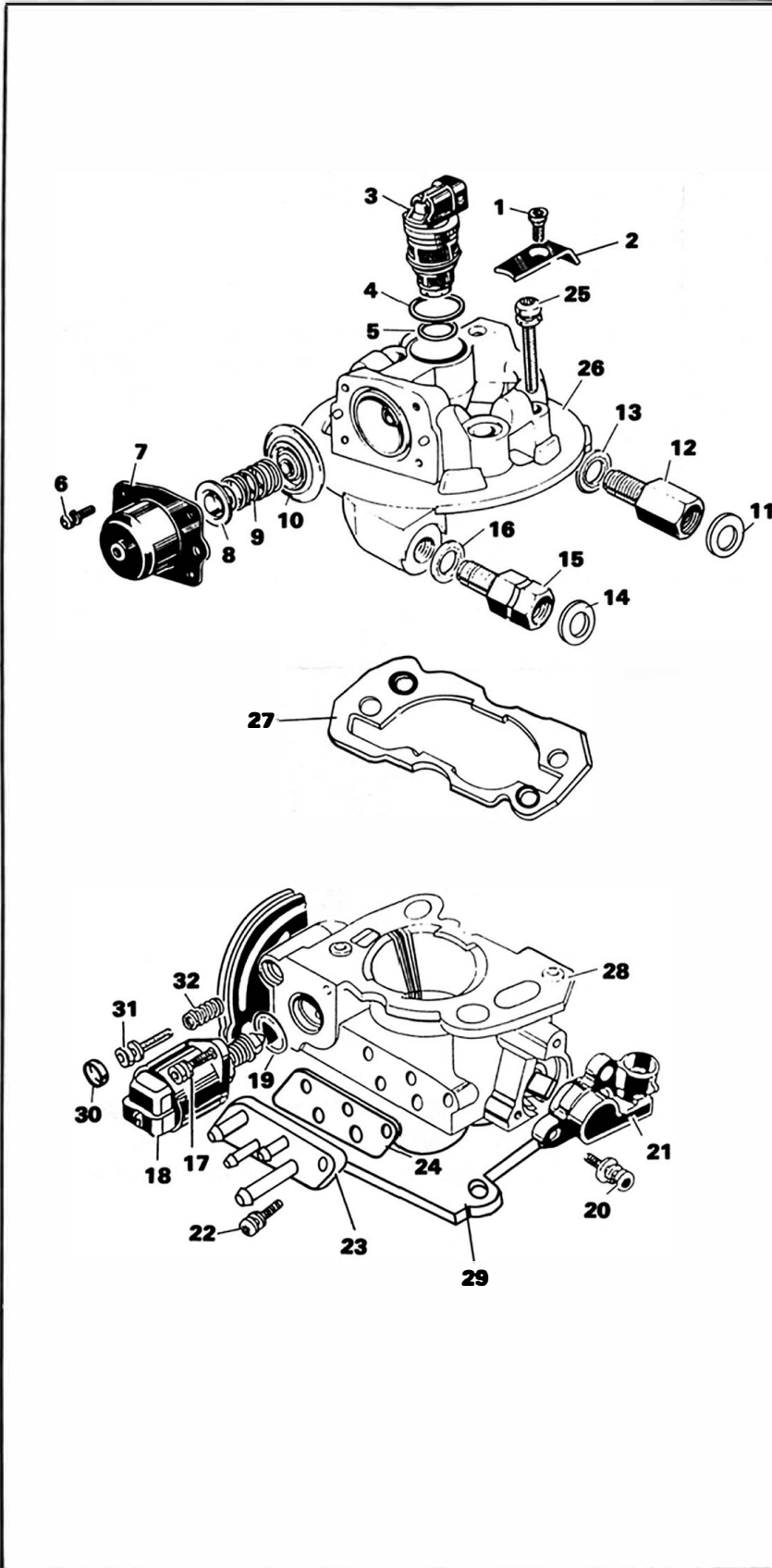
INSTRUCTION SHEET

OFF VEHICLE THROTTLE BODY INJECTION SERVICE

ROCHESTER MODEL 700

50-746

GENERAL EXPLODED VIEW



CAUTION

TO REDUCE THE RISK OF FIRE, IT IS NECESSARY TO RELIEVE THE FUEL SYSTEM PRESSURE BEFORE DISCONNECTING FUEL LINES.

1. DISCONNECT FUEL PUMP.
2. START ENGINE.
3. AFTER ENGINE STALLS, CRANK FOR 5-10 SECONDS.
4. TURN IGNITION OFF.
5. REMOVE TBI ASSEMBLY.

DISASSEMBLY

USE THE EXPLODED VIEW AS A GUIDE. THE NUMERICAL SEQUENCE MAY GENERALLY BE FOLLOWED TO DISASSEMBLE UNIT FAR ENOUGH TO PERMIT CLEANING AND INSPECTION. NOTE SPECIAL INSTRUCTIONS.

SPECIAL DISASSEMBLY INSTRUCTIONS

INJECTOR (3)-REMOVE CAREFULLY BY PULLING STRAIGHT UP. USE CAUTION NOT TO BEND OR BREAK TERMINALS. REMOVE AND DISCARD SCREEN FILTER.
 THROTTLE POSITION SENSOR (21)-SCRIBE A MARK ON MOUNTING THE FLANGES FOR REASSEMBLY REFERENCE.
 PRESSURE REGULATOR (7)-TO AVOID DISTORTION OF COVER, MAINTAIN PRESSURE ON COVER DURING SCREW REMOVAL.
 IDLE STOP SCREW (31)-TURN IN TO LIGHTLY BOTTOM, RECORD NUMBER OF TURNS FOR REASSEMBLY REFERENCE.
 DO NOT DISASSEMBLE THROTTLE SHAFT ASSEMBLY UNLESS REPLACEMENT IS NECESSARY.

NOMENCLATURE

REF. NO.	REF. NO.
1. SCREW & WASHER, INJECTOR RETAINER	19. O-RING, IDLE AIR CONTROL VALVE
2. RETAINER	20. SCREW & WASHER, THROTTLE POSITION SENSOR (2)
3. INJECTOR	21. SENSOR, THROTTLE POSITION
4. O-RING, INJECTOR UPPER	22. SCREW & WASHER, VACUUM TUBE BODY
5. O-RING, INJECTOR LOWER	23. BODY, VACUUM TUBE
6. SCREW & WASHER, PRESSURE REGULATOR	24. GASKET, VACUUM TUBE BODY
7. COVER, PRESSURE REGULATOR	25. SCREW AND WASHER, FUEL METERING BODY
8. SEAT, SPRING	26. FUEL METERING BODY
9. SPRING, PRESSURE REGULATOR	27. GASKET, THROTTLE BODY
10. DIAPHRAGM, PRESSURE REGULATOR	28. THROTTLE BODY
11. O-RING, FUEL INLET TUBE	29. GASKET, FLANGE
12. NUT, FUEL INLET	30. PLUG, IDLE STOP SCREW
13. SEAL, FUEL INLET NUT	31. SCREW, IDLE STOP
14. O-RING, FUEL OUTLET TUBE	32. SPRING, IDLE STOP SCREW
15. NUT, FUEL OUTLET	
16. SEAL, FUEL OUTLET NUT	
17. SCREW & WASHER, IDLE AIR CONTROL VALVE (2)	
18. VALVE, IDLE AIR CONTROL	

CLEANING

CLEANING MUST BE DONE WITH UNIT DISASSEMBLED. SOAK PARTS TO SOFTEN AND REMOVE FOREIGN MATERIAL IN COLD IMMERSION CLEANER (MAX. 15 MINUTES). BE SURE ALL PASSAGES ARE CLEANED OF CARBON AND VARNISH DEPOSITS. USE COMPRESSED AIR TO BLOW OUT ALL PASSAGES. DO NOT SOAK OR USE CLEANER ON ELECTRICAL OR RUBBER PARTS SUCH AS INJECTOR (3), DIAPHRAGM (10), IDLE AIR CONTROL VALVE (18), OR THROTTLE POSITION SENSOR (21).

REASSEMBLY

REASSEMBLE IN REVERSE ORDER OF DISASSEMBLY. NOTE SPECIAL REASSEMBLY INSTRUCTIONS.

SPECIAL REASSEMBLY INSTRUCTIONS

O-RINGS--APPLY SILICONE OIL FOR EASE OF INSTALLATION.
 INJECTOR--INSTALL NEW SCREEN FILTER FROM BOTTOM, PUSHING UP TO LOCK IN PLACE. ALIGN TERMINALS. PUSH STRAIGHT DOWN TO FULLY SEAT.
 IDLE AIR CONTROL VALVE--PUSH END OF CONE IN UNTIL FULLY SEATED POSITION BEFORE INSTALLATION.
 PRESSURE REGULATOR--BE SURE DIAPHRAGM IS COMPLETELY SEATED IN GROOVE BEFORE TIGHTENING COVER IN PLACE.
 THROTTLE POSITION SENSOR--ALIGN SCRIBED MARKS MADE ON DISASSEMBLY WHEN MOUNTING.
 IDLE STOP SCREW--TURN IN TO LIGHTLY SEAT, BACK OUT NUMBER OF TURNS RECORDED ON DISASSEMBLY.

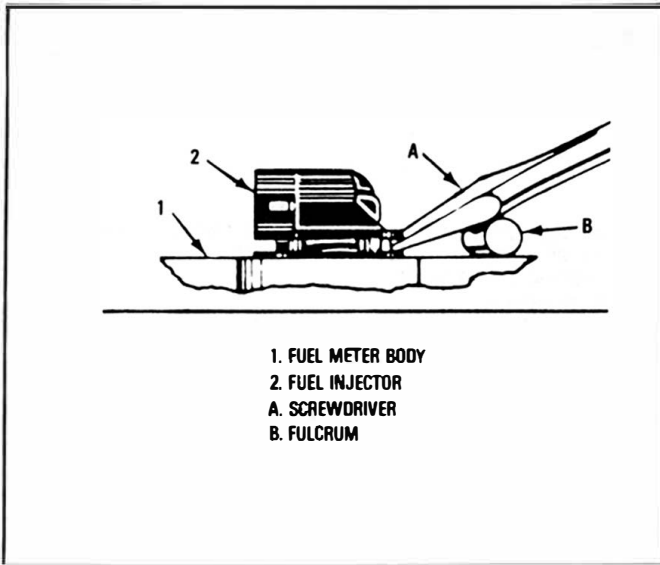


FIG. 1 REMOVING FUEL INJECTOR
USING A FULCRUM, INSERT A FLAT SCREWDRIVER UNDER LIP ON OPPOSITE SIDE OF ELECTRICAL CONNECTOR AND CAREFULLY PRY UPWARD TO REMOVE.

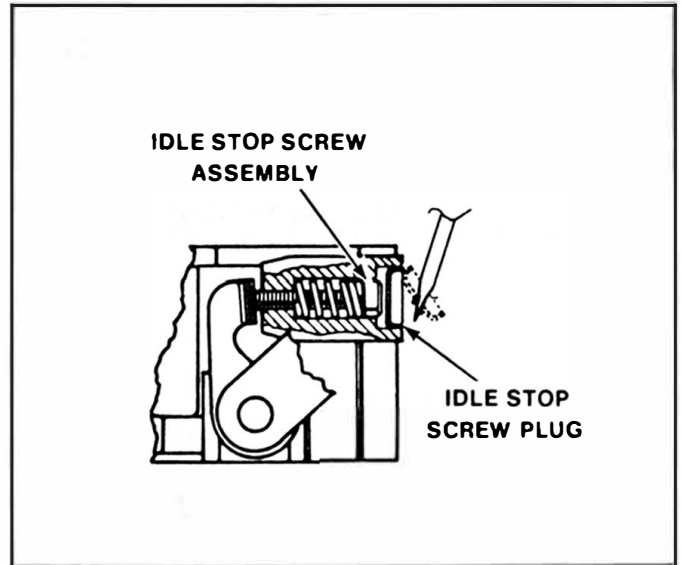


FIG. 2 IDLE STOP SCREW PLUG
CAREFULLY PIERCE PLUG WITH SHARP PUNCH OR AWL AND PRY OUTWARD.

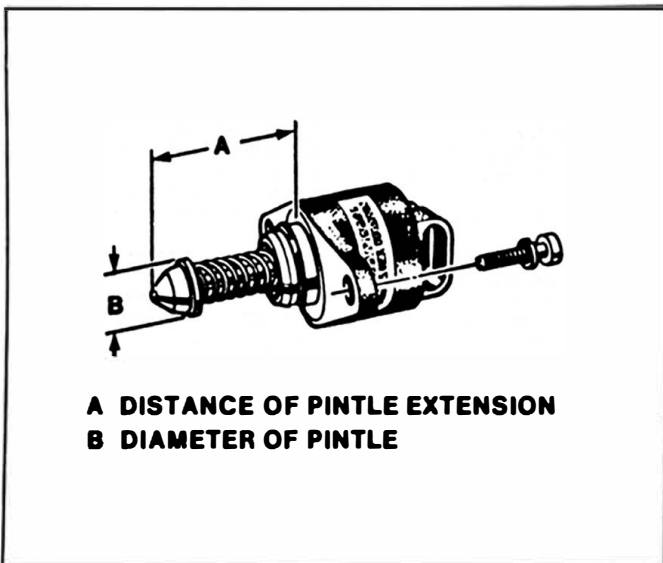


FIG. 3 IAC VALVE MEASUREMENT
BEFORE INSTALLATION OF VALVE, CHECK DISTANCE 'A'. IF MORE THAN 1 1/8" IT MUST BE REDUCED.

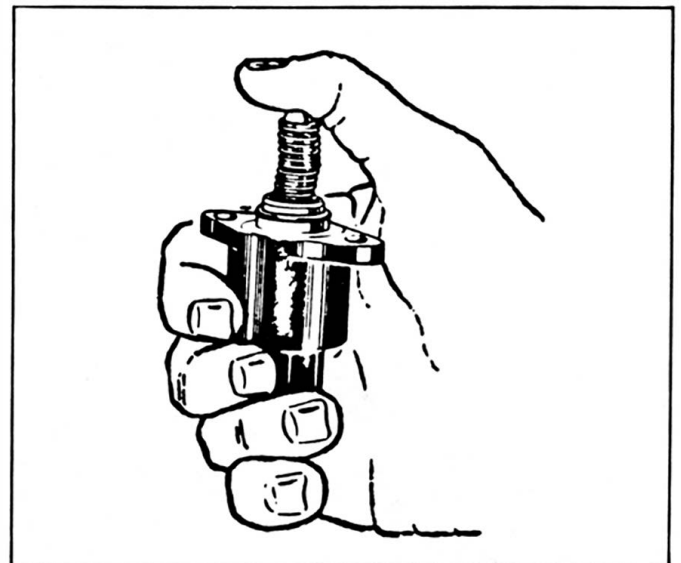


FIG. 4 SHORTENING IAC VALVE
VALVE PINTLE MAY BE PUSHED IN BY HAND AS SHOWN TO REDUCE DISTANCE 'A'.