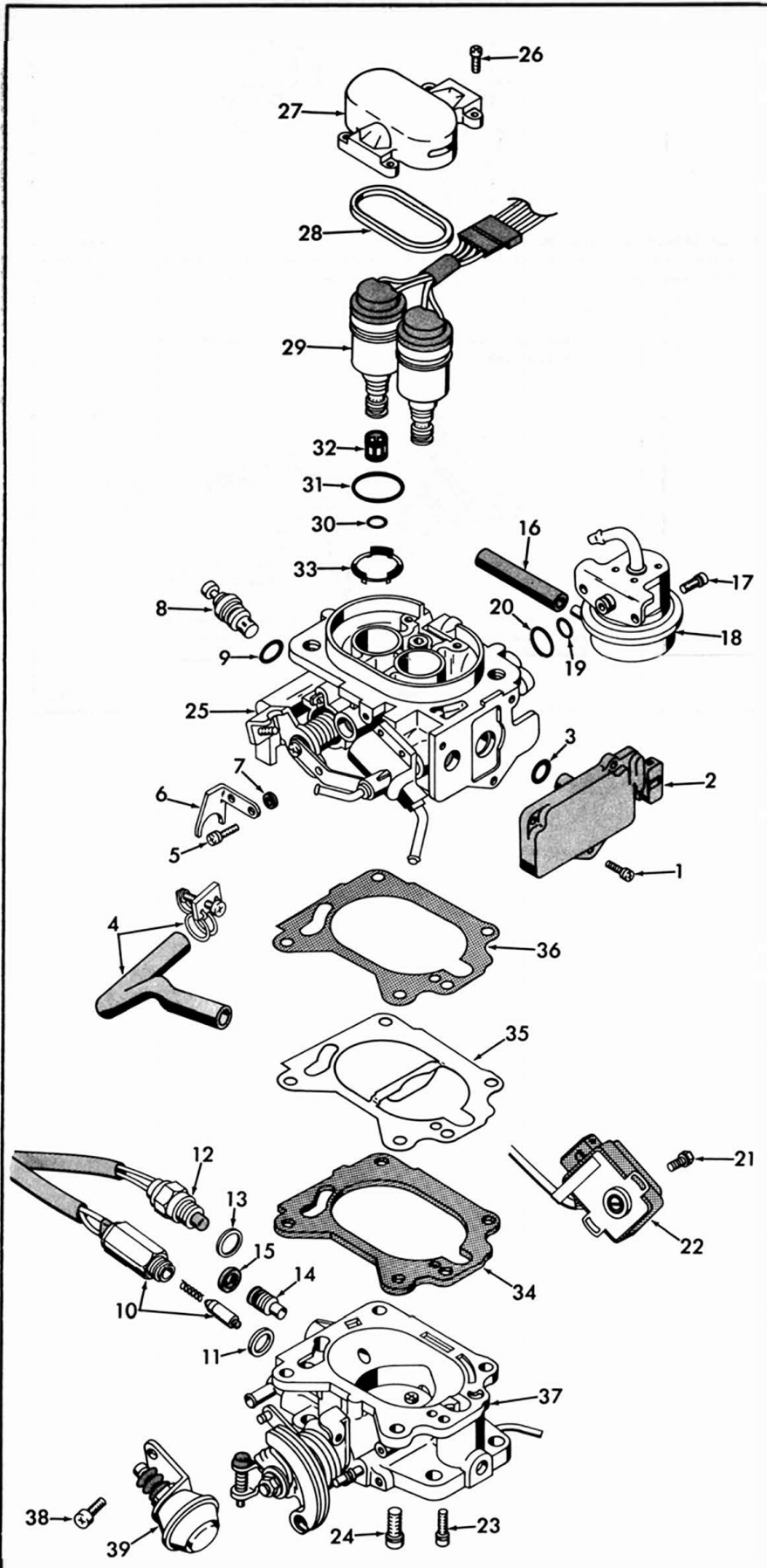


INSTRUCTION SHEET

OFF VEHICLE THROTTLE BODY INJECTION SERVICE HITACHI (NISSAN TRUCK Z24i-VG30i ENGINES)

GENERAL EXPLODED VIEW



CAUTION

DEPRESSURIZE FUEL SYSTEM BEFORE REMOVING THROTTLE BODY ASSEMBLY.

1. DISCONNECT THE FUSE FOR THE FUEL PUMP
2. START THE ENGINE
3. AFTER THE ENGINE STALLS. CRANK THE ENGINE TWO OR THREE TIMES
4. TURN IGNITION OFF
5. DRAIN ABOUT 1 1/2 QTS. OF THE ENGINE COOLANT
6. REMOVE TBI ASSY.

DISASSEMBLY

USE THE EXPLODED VIEW AS A GUIDE. THE NUMERICAL SEQUENCE MAY GENERALLY BE FOLLOWED TO DISASSEMBLE UNIT FAR ENOUGH TO PERMIT CLEANING AND INSPECTION.

SPECIAL DISASSEMBLY NOTES

AIR FLOW METER (2) - DO NOT JAR, HANDLE CAREFULLY

BEFORE REMOVING THERMO WAX ELEMENT (8), ROTATE FAST IDLE CAM COUNTER-CLOCKWISE (HAS A VERY STRONG RETURN SPRING) AND ALIGN HOLE IN CAM WITH HOLE IN BRACKET. LOCK IN PLACE WITH A PIN. REMOVE ONLY THE TOP TWO SCREWS (5) HOLDING THERMO HOUSING IN PLACE. ROTATE HOUSING AND PULL OUT THERMO UNIT TO REPLACE O-RING.

DISASSEMBLE LEADS FROM HARNESS CONNECTOR, IF NECESSARY. FOR REMOVAL OF SOLENOIDS (10), (12). SEE FIG. 1

BEFORE REMOVING IDLE ADJUSTING SCREW (14), TURN IN, COUNTING THE NUMBER OF TURNS IT TAKES TO LIGHTLY SEAT SCREW. RECORD FOR REASSEMBLY.

BEFORE REMOVING THROTTLE POSITION SENSOR (22) SCRIBE A MARK ON MOUNTING FLANGES FOR PROPER REASSEMBLY.

INJECTOR REMOVAL - SEE FIG. 2

NOMENCLATURE

REF. NO.	REF. NO.
1. SCREW & LOCKWASHER (3) - AIR FLOW METER	21. SCREW & LOCKWASHER (2) - THROTTLE SENSOR
2. AIR FLOW METER ASSY.	22. THROTTLE SENSOR ASSY.
3. O-RING - AIR FLOW METER	23. SCREW & LOCKWASHER - THROTTLE BODY
4. HOSE & CLAMPS - WATER	24. SCREW & LOCKWASHER (4) - THROTTLE BODY
5. SCREW & LOCKWASHER (2) - THERMO WAX HOLDER & BRACKET	25. MAIN BODY ASSY. - FUEL CHARGING
6. BRACKET RETAINER - THERMO ELEMENT	26. SCREW & LOCKWASHER (4) - INJECTOR COVER
7. INSULATOR (2) - THERMO HOLDER	27. COVER - INJECTOR
8. THERMO WAX ELEMENT	28. PLATE - HOLDER
9. O-RING - THERMO ELEMENT	29. INJECTOR ASSY. (2)
10. SOLENOID VALVE ASSY. - F.I.C.D.	30. O-RING (2) - INJECTOR (LOWER)
11. GASKET - F.I.C.D. SOLENOID	31. O-RING (2) - INJECTOR (UPPER)
12. SOLENOID VALVE ASSY. - IDLE UP (6 CYL. ENG.)	32. FILTER (2) - INJECTOR
13. GASKET - IDLE UP SOLENOID	33. RING (2) - INJECTOR SPACER
14. ADJUSTING SCREW - IDLE	34. INSULATOR GASKET - THROTTLE BODY
15. SEAL - ADJUST SCREW	35. BAFFLE PLATE - THROTTLE BODY (6 CYL. ENG.)
16. VACUUM HOSE - PRESSURE REGULATOR	36. GASKET - PLATE (6 CYL. ENG.)
17. SCREW & LOCKWASHER (2) - PRESSURE REGULATOR	37. THROTTLE BODY ASSY.
18. REGULATOR - PRESSURE	38. SCREW & LOCKWASHER (2) - DASHPOT
19. O-RING - PRESSURE REGULATOR (SMALL)	39. DASHPOT ASSY. - (A/T MODELS)
20. O-RING - PRESSURE REGULATOR (LARGE)	

CLEANING

CLEANING MUST BE DONE WITH UNIT DISASSEMBLED. CAUTION: DO NOT IMMERSE (SOAK) THROTTLE BODY IN ANY TYPE OF CLEANING SOLVENT. DAMAGE TO THE THROTTLE SHAFT SEALS AND BEARINGS WILL RESULT. CLEAN THE PASSAGES AND PARTS WITH A SPRAY CARBURETOR CLEANER. MAKE CERTAIN THE THROTTLE BODY IS FREE OF ALL CARBON DEPOSITS. WASH OFF IN SUITABLE SOLVENT. BLOW OUT PASSAGES IN THROTTLE BODY AND FUEL INLET CHAMBERS WITH COMPRESSED AIR. DO NOT USE ANY TYPE OF CLEANING SOLVENTS ON ASSEMBLIES (2), (8), (10), (12), (18), (22), (29), (39).

REASSEMBLY

REASSEMBLE IN REVERSE ORDER OF DISASSEMBLY. NOTE SPECIAL INSTRUCTIONS AND ADJUSTMENTS.

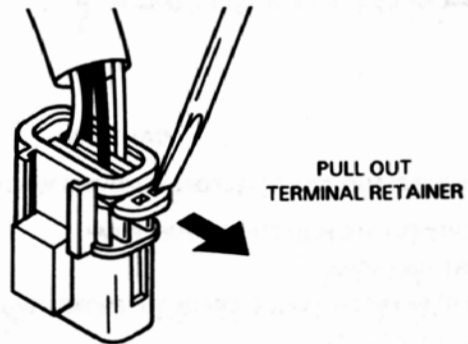
SPECIAL INSTRUCTIONS

O-RINGS - APPLY SOME SILICONE OIL TO O-RINGS FOR EASIER INSTALLATION.
INJECTOR INSTALLATION - PUSH INJECTORS INTO BODY BY HAND UNTIL THE UNITS ARE FULLY SEATED. APPLY A SILICONE SEALER TO THE INJECTOR HARNESS GROMMET (TOP & BOTTOM) BEFORE INSTALLING COVER (27). USE A LOCKING SEALER ON THE 4 SCREWS (26). TIGHTEN THE SCREWS IN A CRISSCROSS PATTERN TO PROPERLY SEAT INJECTORS AND COVER. TORQUE SCREWS TO 1.4-2.5 FT. LBS.

AIR CLEANER RUBBER SEAL - APPLY SILICONE SEALER TO BOTTOM OF THE RUBBER SEAL AND ADHERE TO INJECTOR BODY. DO NOT INSTALL AIR CLEANER UNTIL THE SILICONE SEALER HAS HARDENED. (AIR TIGHT SEAL IS ESSENTIAL TO ENSURE STABLE AND PROPER IDLE.)

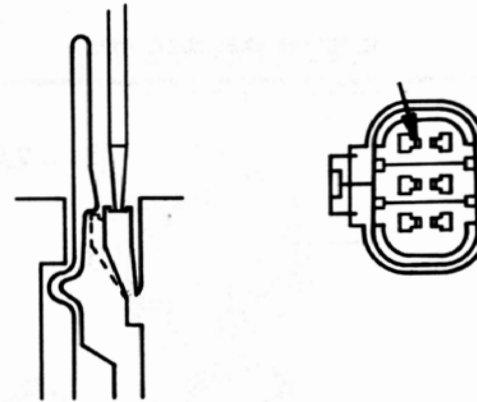
IDLE ADJUSTING SCREW (14) - TURN ADJUSTING SCREW IN UNTIL LIGHTLY SEATED. THEN BACK OUT NUMBER OF TURNS RECORDED OR DISASSEMBLY.

ADJUSTMENTS



USING A SMALL SCREWDRIVER, TILT THE LOCK TONGUE AND AT THE SAME TIME, PUSH OUT THE TERMINAL.

NOTE: DO NOT PULL ON WIRE, ALWAYS PUSH ON TIP OF TERMINAL. DO NOT DAMAGE SEAL BOOT AT THE BOTTOM OF TERMINAL.

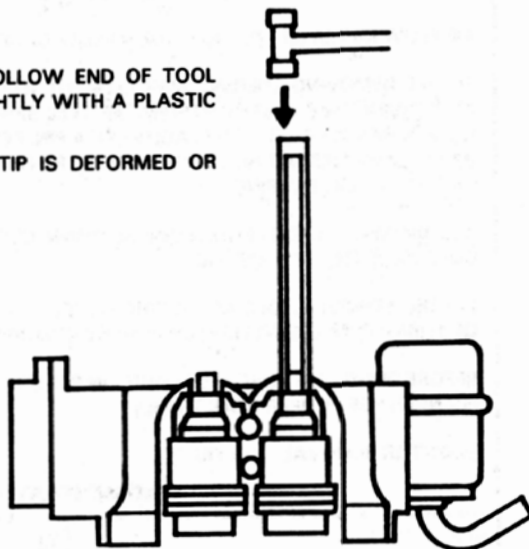


DISASSEMBLY OF HARNESS CONNECTOR

FIG. 1

TO REMOVE INJECTOR PLACE HOLLOW END OF TOOL OVER INJECTOR TIP AND TAP LIGHTLY WITH A PLASTIC HAMMER.

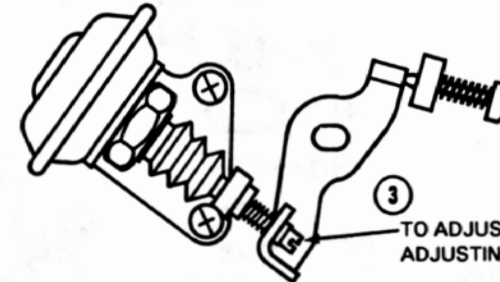
CAUTION: IF INJECTOR NOZZLE TIP IS DEFORMED OR NICKED IT SHOULD BE REPLACED.



INJECTOR REMOVAL

FIG. 2

- ① ENGINE AT OPERATING TEMPERATURE AND IDLE SPEED ADJUSTED TO SPECIFICATIONS.



SETTING
1300-1500 R.P.M.

- ② OPEN THROTTLE VALVE BY HAND AND SLOWLY RETURN, WHEN ADJUSTING SCREW JUST TOUCHES DASH POT PLUNGER CHECK ENGINE SPEED. (R.P.M.)

DASH POT ADJUSTMENT

FIG. 3