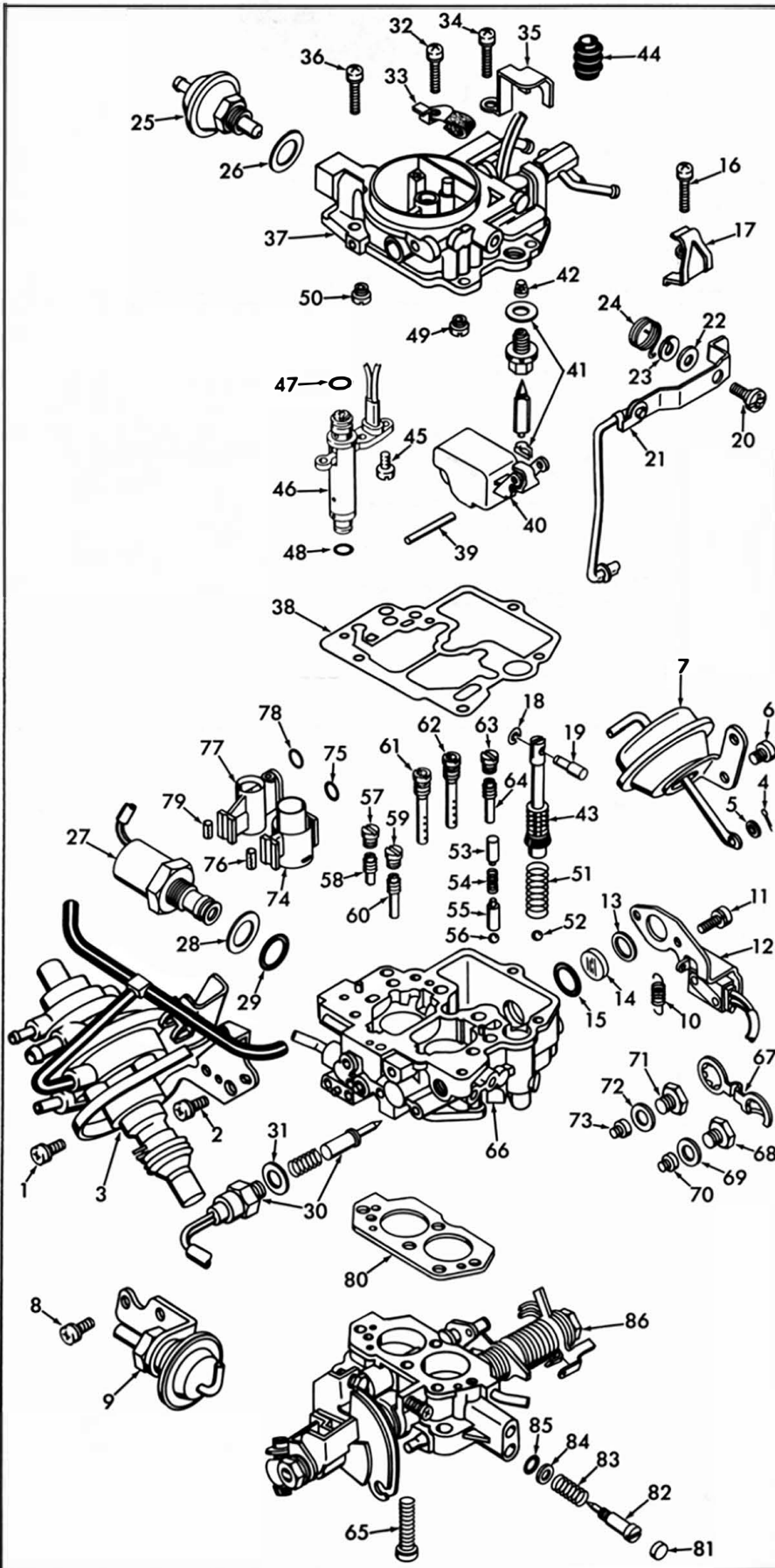


INSTRUCTION SHEET

OFF VEHICLE CARBURETOR SERVICE

HITACHI MODEL - DFE 2832-1, 2, 5, 6

GENERAL EXPLODED VIEW
THE GENERAL DESIGN AND PARTS SHOWN WILL VARY TO
INDIVIDUAL UNITS COVERED ON THIS INSTRUCTION SHEET



DISASSEMBLY

USE THE EXPLODED VIEW AS A GUIDE. THE NUMERICAL SEQUENCE MAY GENERALLY BE FOLLOWED TO DISASSEMBLE UNIT FAR ENOUGH TO PERMIT CLEANING AND INSPECTION. REMOVE WIRES FROM CARBURETOR HARNESS CONNECTOR USING PROPER TOOL AND IDENTIFY WIRE LOCATION FOR PROPER REASSEMBLY. CAUTION: SOME ORIGINAL SCREWS HAVE LOCK TIGHT APPLIED TO THEM. TAKE EXTRA CARE IN REMOVING THEM. USE PROPER TOOLS. NOTE SIZES OF ALL JETS AND THEIR LOCATION FOR PROPER REASSEMBLY. RECORD SIZES BELOW. TO REMOVE IDLE NEEDLE PLUG CAREFULLY DRILL HOLE IN PLUG. USING AN EASY OUT PULL PLUG FROM HOLE. BEFORE REMOVING IDLE MIXTURE NEEDLE. TURN IN COUNTING THE NUMBER OF TURNS IT IS FROM THE SEATED POSITION (RECORD).

NOTE: IF VENTURI'S ARE REMOVED TO REPLACE "O"-RING SEALS. CAREFULLY TAP VENTURI FROM THE BOTTOM SIDE UNTIL FREE OF HOUSING. TO REPLACE, INSTALL NEW "O"-RING. HOLDING VENTURI FIRMLY IN PLACE. TAP LOCKING PIN IN FLUSH WITH HOUSING

NOMENCLATURE

REF. NO.	REF. NO.
1. SCREW & LOCKWASHER (2) - BRACKET	40. FLOAT & LEVER ASSY.
2. SCREW (1) - BRACKET	41. NEEDLE & SEAT ASSY.
3. IDLE SPEED CONTROL ACTUATOR & BRACKET ASSY.	42. SCREEN - NEEDLE SEAT
4. COTTER PIN - SEC. DIAPHRAGM ROD	43. PUMP ASSEMBLY
5. WASHER - SEC. DIAPHRAGM ROD	44. BOOT - PUMP
6. SCREW & LOCKWASHER (2) - SEC. DIAPHRAGM BRACKET	45. SCREW & LOCKWASHER (3) - AIR FUEL SOLENOID ASSY.
7. SECONDARY THROTTLE VALVE DIAPHRAGM ASSY.	46. SOLENOID ASSY. - AIR FUEL RATIO
8. SCREW & LOCKWASHER (2) - BRACKET	47. O-RING (UPPER) - SOLENOID
9. THROTTLE POSITIONER & BRACKET ASSY.	48. O-RING (LOWER) - SOLENOID
10. SPRING - SWITCH LEVER	49. JET - PRIMARY SLOW AIR BLEED
11. SCREW & LOCKWASHER (2) - SWITCH BRACKET	50. JET - SECONDARY SLOW AIR BLEED
12. THROTTLE VALVE SWITCH & BRACKET ASSY.	51. SPRING - PUMP RETURN
13. GASKET - WINDOW	52. BALL - PUMP INTAKE CHECK
14. WINDOW - FUEL BOWL	53. WEIGHT - PUMP DISCHARGE
15. O-RING - WINDOW	54. SPRING - PUMP DISCHARGE
16. SCREW & LOCKWASHER - BRACKET	55. WEIGHT - PUMP DISCHARGE
17. BRACKET - PUMP STROKE	56. BALL - PUMP DISCHARGE
18. RETAINER - PIN	57. PLUG - RICHER JET
19. PIN - PUMP LEVER	58. JET - RICHER
20. PIVOT SCREW - PUMP LEVER	59. PLUG - SEC. SLOW JET
21. LEVER & ROD ASSY. - PUMP	60. JET - SECONDARY SLOW
22. WASHER - PUMP LEVER SCREW	61. JET - SECONDARY MAIN AIR BLEED
23. LOCKWASHER - PUMP LEVER SCREW	62. JET - PRIMARY MAIN AIR BLEED
24. SPRING - PUMP LEVER	63. PLUG - PRIMARY SLOW JET
25. VACUUM PISTON ASSY.	64. JET - PRIMARY SLOW JET
26. GASKET - VAC. PISTON ASSY.	65. SCREW & LOCKWASHER (4) - THROTTLE BODY
27. RICHER SOLENOID ASSY.	66. BOWL ASSEMBLY
28. GASKET - RICHER SOLENOID ASSY.	67. RETAINER - PLUGS
29. O-RING - RICHER SOLENOID ASSY.	68. PLUG - PRIMARY MAIN JET
30. SOLENOID ASSY. - IDLE SHUT OFF	69. GASKET - PLUG
31. SCREW - IDLE SHUT OFF SOLENOID STOP BRACKET	70. JET - PRIMARY MAIN
32. SCREW & LOCKWASHER - STOP BRACKET	71. PLUG - SEC. MAIN JET
33. STOP BRACKET - PUMP LEVER	72. GASKET - PLUG
34. SCREW & LOCKWASHER - BRACKET	73. JET - SECONDARY MAIN
35. BRACKET - FUEL INLET FITTING	74. VENTURI - PRIMARY
36. SCREW & LOCKWASHER (2) - BOWL COVER	75. O-RING - PRIMARY VENTURI
37. BOWL COVER ASSY.	76. LOCK PIN - PRIMARY VENTURI
38. GASKET - BOWL COVER	77. VENTURI - SECONDARY
39. PIN - FLOAT	78. O-RING - SEC. VENTURI
	79. LOCK PIN - SEC. VENTURI
	80. GASKET - THROTTLE BODY
	81. PLUG - IDLE ADJ. NEEDLE
	82. NEEDLE - IDLE ADJUSTING
	83. SPRING - IDLE NEEDLE
	84. WASHER - IDLE NEEDLE
	85. O-RING - IDLE NEEDLE
	86. THROTTLE BODY ASSEMBLY

CLEANING

CLEANING MUST BE DONE WITH CARBURETOR DISASSEMBLED. CAUTION: DO NOT SOAK. USE A SPRAY TYPE CARBURETOR CLEANER TO CLEAN ALL THE PASSAGES OF THE CARBURETOR. MAKE CERTAIN THE THROTTLE BODY IS FREE OF ALL CARBON DEPOSITS. WASH OFF IN SUITABLE SOLVENT. BLOW OUT ALL PASSAGES IN CASTINGS WITH COMPRESSED AIR AND CHECK CAREFULLY TO INSURE THOROUGH CLEANING OF OBSCURE AREAS. DO NOT SOAK DIAPHRAGM OR SOLENOID ASSEMBLIES, OR PARTS MADE OF RUBBER IN ANY TYPE OF CLEANING SOLVENTS.

REASSEMBLY

REASSEMBLE IN REVERSE ORDER OF DISASSEMBLY. NOTE SPECIAL INSTRUCTIONS AND FOLLOW NUMERICAL OUTLINE IN MAKING ADJUSTMENTS NECESSARY FOR CARBURETOR BEING SERVICED.

FOLLOW SERVICE MANUAL INSTRUCTIONS TO MAKE FINAL ADJUSTMENTS ON CAR

SPECIAL INSTRUCTIONS

IDLE ADJUSTING NEEDLE (82) - TURN IN UNTIL LIGHTLY SEATED, THEN BACK OUT NUMBER OF TURNS RECORDED ON DISASSEMBLY.

PUMP RETURN SPRING (51) - INSTALL WITH CROSS WIRE TO THE BOTTOM OF PUMP CYLINDER

O-RING SEALS - LIGHTLY LUBRICATE FOR EASIER INSTALLATION OF SOLENOIDS.

ADJUSTMENTS

① BOWL COVER INVERTED. RAISE FLOAT AND THEN LOWER IT SLOWLY UNTIL FLOAT SEAT MAKES CONTACT WITH STEM OF NEEDLE VALVE (DO NOT COMPRESS SPRING LOADED NEEDLE)

③ TO ADJUST BEND FLOAT SEAT

SETTING
12MM
.470"

② MEASURE DISTANCE BETWEEN OF FLOAT AND BOWL COVER

CAUTION DO NOT EXERT PRESSURE ON RESILIENT NEEDLE VALVE

DRY FLOAT LEVEL ADJUSTMENT FIG 1

① BOWL COVER INVERTED. RAISE FLOAT UNTIL FLOAT STOPPER CONTACTS CARBURETOR BODY

NOTE: REMOVE NEEDLE PULL CLIP TO MAKE THIS ADJUSTMENT.

③ TO ADJUST BEND FLOAT STOPPER

② MEASURE DISTANCE BETWEEN FLOAT SEAT AND STEM OF NEEDLE VALVE

SETTING
1.3 - 1.7MM
.051" - .067"

FLOAT DROP ADJUSTMENT FIG 2

③ TO ADJUST BEND LIMITER STOP

② GAUGE IN PLACE. TOP OF PUMP LEVER SLOT SHOULD JUST TOUCH PIN

SETTING
.51MM +/- .20MM
.020" +/- .007"

① PLACE A PIECE OF ROUND STOCK OF PROPER THICKNESS BETWEEN PRIMARY THROTTLE VALVE & BORE OF CARBURETOR

PUMP STROKE LIMITER ADJUSTMENT FIG 3

SETTING
.15MM +/- .02MM
.006" +/- .0008"

② TO ADJUST TURN SCREW

PRIMARY VALVE

① CHECK CLEARANCE BETWEEN PRIMARY THROTTLE VALVE AND BORE OF CARB.

THROTTLE POSITIONER ADJUSTMENT FIG 4

SETTING
7.18MM +/- .70MM
.282" +/- .027"

③ TO ADJUST BEND TONGUE

① OPEN PRIMARY THROTTLE LEVER UNTIL ADJUSTING PLATE COMES IN CONTACT WITH LOCK LEVER.

② MEASURE DISTANCE BETWEEN PRIMARY VALVE AND INNER WALL.

PRIMARY VALVE

SECONDARY THROTTLE START TO OPEN ADJUSTMENT FIG 5