

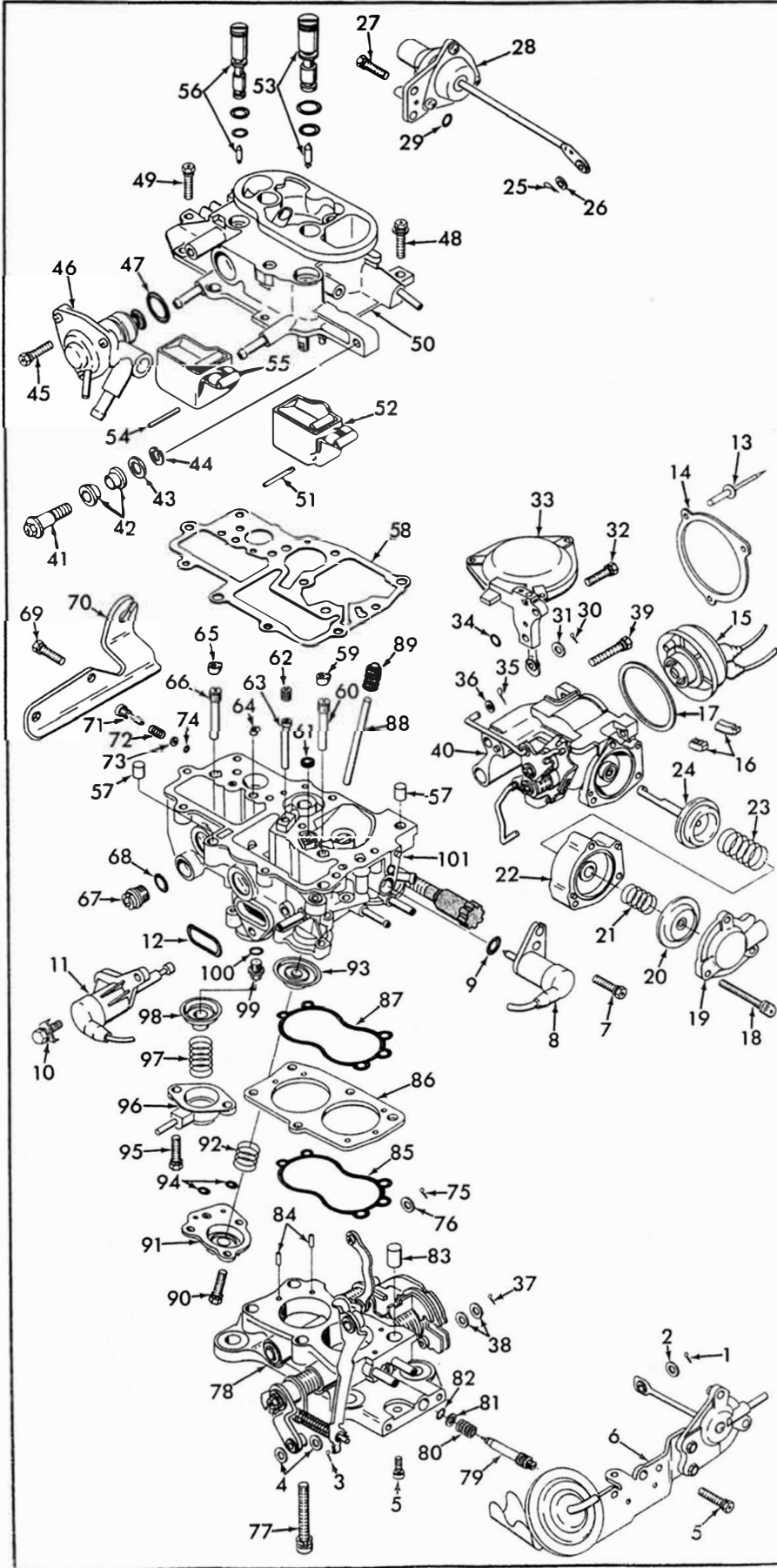
INSTRUCTION SHEET

OFF VEHICLE CARBURETOR SERVICE

(HONDA) KEIHIN-MODEL 3 BARREL

GENERAL EXPLODED VIEW

THE GENERAL DESIGN AND PARTS SHOWN WILL VARY TO
INDIVIDUAL UNITS COVERED ON THIS INSTRUCTION SHEET.



DISASSEMBLY

USE EXPLODED VIEW AS A GUIDE. THE NUMERICAL SEQUENCE MAY GENERALLY BE FOLLOWED TO DISASSEMBLE UNIT FAR ENOUGH TO PERMIT CLEANING AND INSPECTION. NOTE: TO REMOVE POP RIVETS USE A 5/32" DRILL DRILL OFF RIVET HEADS AND REMOVE THE RETAINER RING. WHEN REMOVING CHOKE COVER BE CAREFUL NOT TO LOOSE CHOKE COVER LOCKING GEARS. TO REMOVE FLOAT PINS CAREFULLY SUPPORT SHORT FLOAT PIN BOSS. USING A SMALL PIN PUNCH AND HAMMER, TAP PIN TOWARDS SHORT BOSS. INSIDE END HAS A TAPER WHICH FITS SNUG IN LONG BOSS. RECORD SIZES OF JETS AND TUBES (BELOW) FOR PROPER ASSEMBLY.

NOMENCLATURE

REF. NO.	REF. NO.
1. COTTER PIN-A/C CONTROLLER ROD	48. SCREW, LOCKWASHER & FLAT WASHER (2)-BOWL COVER (LOCATOR PIN HOLES)
2. WASHER-A/C CONTROLLER ROD	49. SCREW & LOCKWASHER (8)-BOWL COVER
3. COTTER PIN-T/C CONTROLLER ROD	50. BOWL COVER ASSEMBLY
4. WASHER(2)-T/C CONTROLLER ROD	51. PIN-MAIN FLOAT
5. SCREW & LOCKWASHER (3)-BRACKET	52. FLOAT-MAIN
6. THROTTLE & A/C CONTROLLER ASSEMBLY'S WITH BRACKET	53. NEEDLE & SEAT ASSY.-MAIN
7. SCREW & LOCKWASHER -SOLENOID	54. PIN-AUXILIARY FLOAT
8. SOLENOID-IDLE CUT OFF	55. FLOAT-AUXILIARY
9. O-RING-SOLENOID MOUNTING	56. NEEDLE & SEAT ASSY.-AUXILIARY
10. SCREW & LOCKWASHER (2)-SOLENOID	57. PIN (2)-LOCATOR
11. SOLENOID-PRIMARY MAIN JET CUTOFF	58. GASKET-BOWL COVER
12. O-RING-SOLENOID MOUNTING	59. CAP (BLACK)-PRIMARY SLOW JET
13. POP RIVET (3)-RETAINER	60. JET-PRIMARY SLOW
14. RETAINER-CHOKE COVER	61. SEAL-PRIMARY VENTURI
15. CHOKE COVER ASSEMBLY-ELECTRIC	62. JET-SEC. MAIN AIR BLEED
16. CHOKE COVER LOCKING TEETH SET	63. TUBE-SECONDARY EMULSION
17. GASKET-CHOKE COVER	64. CAP (WHITE)-IDLE PASSAGE
18. SCREW & LOCKWASHER (3)-FAST IDLE UNLOADER ASSY.	65. CAP (WHITE-AUXILIARY SLOW JET
19. COVER-UNLOADER	66. JET-AUXILIARY SLOW
20. DIAPHRAGM-UNLOADER (OUTER)	67. PLUG-AUXILIARY FUEL BOWL
21. SPRING-DIAPHRAGM	68. O-RING-PLUG
22. HOUSING-FAST IDLE UNLOADER	69. SCREW & LOCKWASHER (2)-BRACKET
23. SPRING-DIAPHRAGM	70. BRACKET-CABLE
24. DIAPHRAGM-UNLOADER (INNER)	71. SCREW-AUXILIARY IDLE
25. COTTER PIN-CHOKE OPENER ROD	72. SPRING-AUX. IDLE SCREW
26. WASHER-CHOKE OPENER ROD	73. WASHER-AUX. IDLE SCREW
27. SCREW & LOCKWASHER (2)-CHOKE OPENER	74. O-RING-AUX. IDLE SCREW
28. CHOKE OPENER DIAPHRAGM ASSY.	75. COTTER PIN-AUX. THROTTLE LINK
29. O-RING-CHOKE OPENER	76. WASHER-AUX. THROTTLE LINK
30. COTTER PIN-SEC. DIAPHRAGM ROD	77. SCREW & LOCKWASHER (5)-THROTTLE BODY
31. WASHER'S-SEC. DIAPHRAGM ROD	78. THROTTLE BODY ASSEMBLY
32. SCREW & LOCKWASHER (2)-SEC. DIAPHRAGM ASSEMBLY	79. NEEDLE-PRIMARY IDLE ADJ.
33. SECONDARY DIAPHRAGM ASSY.	80. SPRING-IDLE ADJ. NEEDLE
34. O-RING-SEC. DIAPHRAGM PASSAGE	81. WASHER-IDLE NEEDLE
35. COTTER PIN-CHOKE ROD	82. O-RING-IDLE NEEDLE
36. WASHER-CHOKE ROD	83. PIN-LOCATOR (LARGE)
37. COTTER PIN-FAST IDLE ROD	84. PIN (2)-LOCATOR (SMALL)
38. WASHER'S (2)-FAST IDLE ROD	85. O-RING-SPACER
39. SCREW & LOCKWASHER (2)-CHOKE HOUSING	86. SPACER-THROTTLE BODY
40. CHOKE HOUSING ASSEMBLY	87. O-RING-SPACER
41. SCREW-PUMP LEVER	88. ROD-PUMP
42. BUSHINGS (2)-PUMP LEVER	89. BOOT-PUMP ROD
43. WASHER-PUMP LEVER SCREW	90. SCREW & LOCKWASHER (3)-COVER
44. LOCKWASHER-PUMP LEVER SCREW	91. COVER-PUMP DIAPHRAGM
45. SCREW & LOCKWASHER-BOWL VENT SHUT OFF	92. SPRING-DIAPHRAGM RETURN
46. BOWL VENT SHUT OFF ASSEMBLY	93. DIAPHRAGM-PUMP
47. O-RING-BOWL VENT ASSEMBLY	94. O-RING (2)-PUMP PASSAGE'S
	95. SCREW & LOCKWASHER (2)-COVER
	96. COVER-POWER VALVE DIAPHRAGM
	97. SPRING-DIAPHRAGM
	98. DIAPHRAGM-POWER VALVE
	99. POWER VALVE ASSEMBLY
	100. O-RING-POWER VALVE
	101. BOWL ASSEMBLY

CLEANING

CLEANING MUST BE DONE WITH CARBURETOR DISASSEMBLED. SOAK PARTS LONG ENOUGH TO SOFTEN AND REMOVE ALL FOREIGN MATERIAL. DO NOT SOAK ANY ASSEMBLIES FOR A PROLONGED PERIOD OF TIME WITH PLASTIC PARTS THAT ARE NOT REMOVED. CAUTION: TAKE EXTRA CARE WHEN CLEANING FUEL BOWL ASSEMBLY IN SOLVENTS BECAUSE OF THE WINDOW SEALS WHICH ARE NOT REPLACEABLE.) USE A CARBURETOR CLEANING SOLVENT. MAKE CERTAIN THE THROTTLE BODY IS FREE OF ALL CARBON DEPOSITS. WASH OFF IN SUITABLE SOLVENT. BLOW OUT ALL PASSAGES AND JETS IN CASTINGS WITH COMPRESSED AIR AND CHECK CAREFULLY TO INSURE THOROUGH CLEANING OF OBSCURE AREAS. NOTE: DO NOT SOAK DIAPHRAGM OR SOLENOID ASSEMBLIES. CHOKE COVER OR PARTS MAKE OF RUBBER IN ANY TYPE OF CLEANING SOLVENTS.)

REASSEMBLY

REASSEMBLE IN REVERSE ORDER OF DISASSEMBLY. NOTE SPECIAL INSTRUCTIONS AND ADJUSTMENTS.

SPECIAL INSTRUCTIONS

IDLE ADJUSTING NEEDLE (79)-TO INSTALL ASSEMBLE SPRING (80). WASHER (81). O-RING (82) ON NEEDLE. TURN NEEDLE IN UNTIL LIGHTLY SEATED THEN BACK OUT 2 TURNS.

THROTTLE BODY ASSEMBLY-WHEN INSTALLING IT TO BOWL ASSEMBLY BE SURE TO HOOK UP AUXILIARY THROTTLE LINK.

AUXILIARY IDLE ADJUSTING SCREW (71)-TO INSTALL FIRST ASSEMBLE SPRING (72). WASHER (73), O-RING (74) ON SCREW. TURN SCREW IN UNTIL SEATED.

NEEDLE AND SEAT ASSEMBLIES (53), (56)-AFTER WET FLOAT LEVELS HAVE BEEN ADJUSTED BE SURE TO SEAL SCREW HEADS OF NEEDLE SEAT WITH A SEALER TO PREVENT TURNING.

FLOAT PINS (51), (54)-INSTALL WITH TAPERED ENDS TOWARDS LONG BOSS.

BOWL COVER SCREWS-TIGHTEN SCREWS FROM THE CENTER OUT.

CHOKE COVER ASSEMBLY (15)-WHEN INSTALLING BE SURE LOOP END OF SPRING IS PLACED ON PIN OF LEVER. (PLASTIC BUSHING MUST BE ON PIN OF LEVER)

FOLLOW SERVICE MANUAL INSTRUCTIONS TO MAKE FINAL ADJUSTMENTS ON CAR.

ADJUSTMENTS

1 BOWL COVER INVERTED. THEN TURN UP TO THE VERTICAL POSITION WITH FLOAT ARM PINS TO THE TOP. FLOAT RESTING LIGHTLY ON NEEDLE (SPRING LOADED) DO NOT COMPRESS SPRING LOADED NEEDLE.

2 MEASURE DISTANCE FROM GASKET SURFACE OF BOWL COVER TO FLAT BOTTOM SURFACE OF FLOAT AT TOE END.

3 TO ADJUST TURN NEEDLE SEAT.

38MM LARGE FLOAT

34MM SMALL FLOAT

CAUTION: DO NOT EXERT PRESSURE ON RESILIENT NEEDLE VALVE.

BASIC FLOAT LEVEL ADJUSTMENT

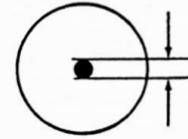
FIG. 1

CAR ON LEVEL GROUND. ENGINE AT OPERATING TEMPERATURE. SNAP THROTTLE TO 3000 R. P. M. SEVERAL TIMES. THEN LET IT IDLE.

WHEN FUEL LEVEL STABILIZES. CHECK FUEL LEVEL. IT SHOULD TOUCH DOT ON INSPECTION WINDOW. (CHECK PRIMARY AND AUXILIARY FLOATS.)

TO CHANGE LEVEL TURN NEEDLE SEAT NOT MORE THAN 1/8 TURN EVERY 15 SECONDS. REPEAT STEP 1.

SEAL TOP OF NEEDLE SEATS WITH A SEALER TO PREVENT TURNING.



(ON CAR) WET FLOAT LEVEL ADJUSTMENT

FIG. 2

1 CURB IDLE STOP SCREW BACKED OUT. (THROTTLE VALVES COMPLETELY CLOSED).

2 PUMP LEVER MUST BE IN CONTACT WITH PUMP SHAFT.

DO NOT BEND THIS TANG

CLEARANCE 11.5-12MM, 29/64"-31/64"

STOP BRACKET

3 MEASURE BETWEEN PUMP LEVER TANG AND STOP BRACKET.

4 TO ADJUST BEND TANG.

PUMP LINKAGE TRAVEL

FIG. 3

1 OPEN THROTTLE. CLOSE CHOKE THEN CLOSE THROTTLE SETTING FAST IDLE LEVER ON HIGH STEP OF CAM. (KEEP THIS POSITION THRU THE FOLLOWING ADJUSTMENTS.)

2 TO ADJUST BEND TAB A.

3 PUSH UP ON CHOKE OPENER LEVER UNTIL IT STOPS. (THE OPENER ROD SEATS AGAINST THE PRESSURIZED BLEED VALVE.) PULL CHOKE DRIVE LEVER DOWN AGAINST THE OPENER LEVER.

2 ATTACH A HOSE AND CHECK VALVE TO CHOKE OPENER AS SHOWN. THEN PRESSURIZE THE CHOKE OPENER WITH COMPRESSED AIR (15-50 PSI) TO HOLD BLEED VALVE CLOSED.

4 MEASURE CLEARANCE BETWEEN UPPER EDGE OF CHOKE VALVE AND AIR HORN WALL.

SEE DATA TABLE BELOW

1ST. STAGE

6 REMOVE AIR PRESSURE HOSE AND CHECK VALVE. PUSH UP ON CHOKE OPENER LEVER UNTIL IT STOPS AGAINST HOUSING. PULL CHOKE DRIVE LEVER DOWN AGAINST THE OPENER LEVER. MEASURE AS IN STEP 4.

7 TO ADJUST BEND TAB B.

2ND. STAGE

8 CHOKE OPENER LEVER HELD AGAINST THE STOP AS IN STAGE 2. RELEASE CHOKE DRIVE LEVER. LEVER SHOULD STAY SEATED AGAINST SPRING LOOP. MEASURE CLEARANCE AS IN STEP 4.

9 TO ADJUST BEND TAB C.

3RD. STAGE

CHOKE OPENER ADJUSTMENT

FIG. 4

INSTALL COVER AND ALIGN INDEX MARKS ON COVER AND HOUSING. NOTE: BE SURE LOOP OF SPRING IS ON LEVER PIN BUSHING.

INSTALL GEARS IN THE GROOVES IN THE CHOKE COVER AND HOUSING.

INSTALL RETAINER RING AND POP RIVETS.

INDEX MARKS

GEARS

AUTOMATIC CHOKE ADJUSTMENT

FIG. 5

ENGINE AT NORMAL OPERATING TEMPERATURE AND IDLE ADJUSTED. (USE CAR SERVICE MANUAL PROCEDURE.)

DISCONNECT AND PLUG THE INSIDE VACUUM HOSE OF THE FAST IDLE UNLOADER.

ENGINE OFF. OPEN THROTTLE. CLOSE CHOKE VALVE. RELEASE THROTTLE TO SET FAST IDLE LEVER ON HIGH STEP OF FAST IDLE CAM.

START ENGINE. DO NOT TOUCH THROTTLE RUN FOR 1 MINUTE AND CHECK R. P. M.

SETTING
2500 +/- 500 R. P. M.

TO ADJUST TURN FAST IDLE ADJUSTING SCREW.

FAST IDLE ADJUSTMENT

FIG. 6

**DATA TABLE
CHOKE OPENER/LINKAGE ADJUSTMENT**

YEAR/MODEL	1ST STAGE CLEARANCE	2ND STAGE CLEARANCE	3RD STAGE CLEARANCE
1984 ACCORD	.083MM - .033"	1.49MM - .069"	4.44MM - 1.75"
1985 ACCORD			
49 ST./HL.ALT.	M/T 1.29MM - .051"	1.71MM - .067"	4.60MM - .181"
	A/T 1.16MM - .045"	1.89MM - .074"	4.80MM - .189"
CAL	M/T 1.22MM - .048"	1.71MM - .067"	4.60MM - .181"
	A/T 1.08MM - .043"	1.89MM - .074"	4.80MM - .189"
1988 ACCORD			
ALL	M/T 1.54MM - .061"	3.28MM - .129"	5.25MM - .207"
49 ST./HL.ALT.	A/T 1.46MM - .057"	3.54MM - .139"	5.25MM - .207"
CAL	A/T 1.46MM - .057"	3.28MM - .129"	5.25MM - .207"