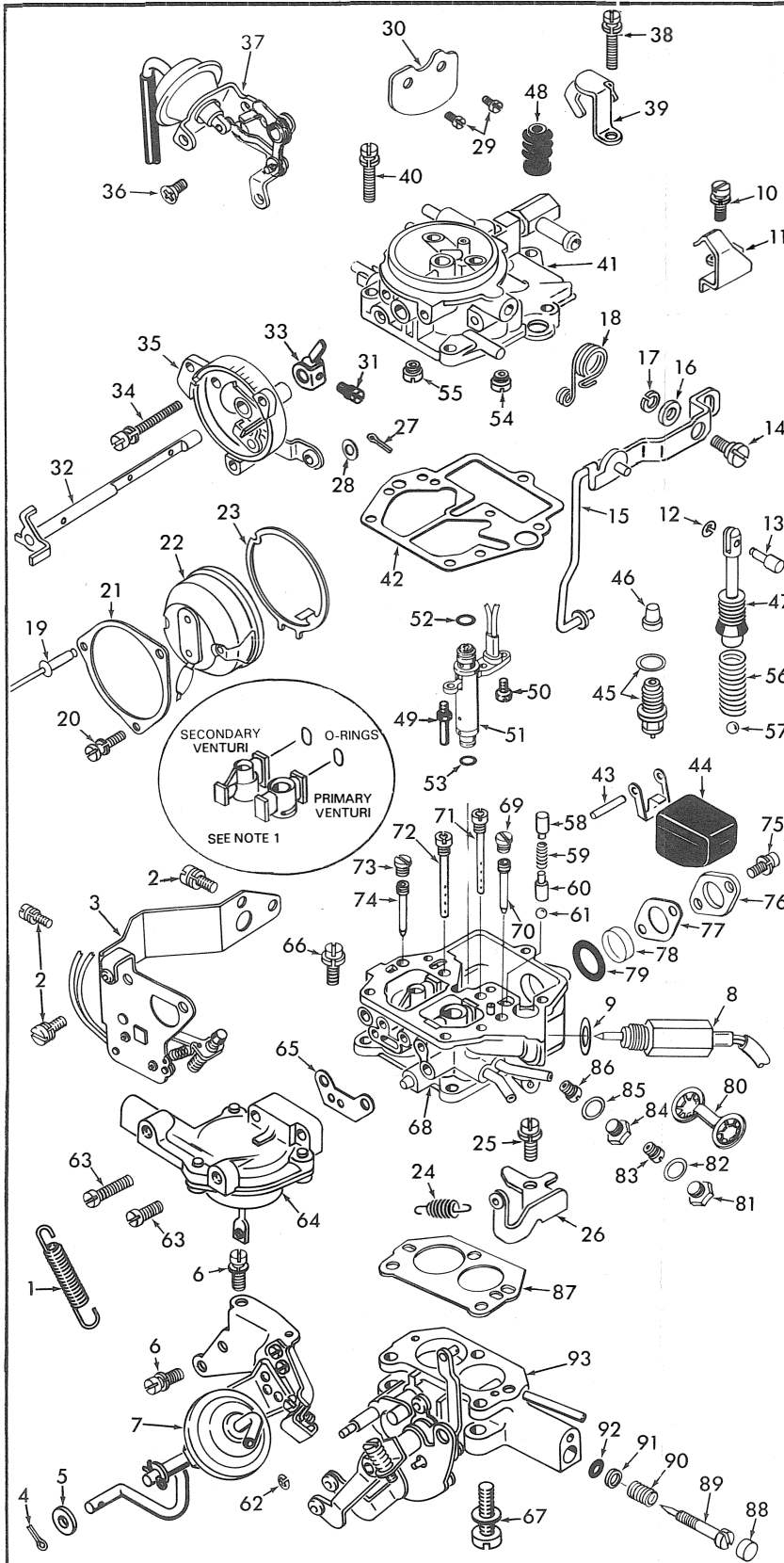


INSTRUCTION SHEET

OFF VEHICLE CARBURETOR SERVICE

HITACHI MODEL - DFP 306

GENERAL EXPLODED VIEW
THE GENERAL DESIGN AND PARTS SHOWN WILL VARY TO
INDIVIDUAL UNITS COVERED ON THIS INSTRUCTION SHEET.



DISASSEMBLY

USE THE EXPLODED VIEW AS A GUIDE. THE NUMERICAL SEQUENCE MAY GENERALLY BE FOLLOWED TO DISASSEMBLE UNIT FAR ENOUGH TO PERMIT CLEANING AND INSPECTION. REMOVE WIRES FROM CARBURETOR HARNESS CONNECTOR USING PROPER TOOL AND IDENTIFY WIRE LOCATION FOR PROPER REASSEMBLY. CAUTION: ORIGINAL SCREWS HAVE LOCK TIGHT APPLIED TO THEM, TAKE EXTRA CARE IN REMOVING THEM. USE PROPER TOOLS. DRILL OR CUT OFF POP RIVET HEADS TO REMOVE CHOKE COVER. NOTE: SIZES OF ALL JETS AND THEIR LOCATION FOR PROPER REASSEMBLY. RECORD SIZES BELOW. TO REMOVE IDLE NEEDLE PLUG (88) CAREFULLY DRILL HOLE IN PLUG. USING AN EASY OUT PULL PLUG FROM HOLE.

NOTE 1. IF VENTURI'S ARE REMOVED TO REPLACE "O"-RING SEALS, CAREFULLY REMOVE STAKING. LOCKING VENTURI LOCK SCREWS. (MAY ALSO CONTAIN LOCK TIGHT). LOOSEN SCREW, REMOVE VENTURI AND REINSTALL NEW "O"-RING. HOLDING VENTURI FIRMLY IN PLACE, TIGHTEN LOCK SCREW. (RETAKE IF NECESSARY).

NOMENCLATURE

REF. NO.	REF. NO.
1. SPRING-THROTTLE RETURN	45. NEEDLE & SEAT ASSY.
2. SCREW & LKWSHR. (5)-BRACKET	46. SCREEN-NEEDLE SEAT
3. THROTTLE VALVE SWITCH & BRACKET ASSEMBLY	47. PUMP ASSEMBLY
4. COTTER PIN-THROTTLE OPENER LINK	48. BOOT-PUMP
5. WASHER-THROTTLE OPENER LINK	49. JET-POWER ENRICHMENT
6. SCREW & LKWSHR. (2)-BRACKET	50. SCREW & LKWSHR.-SOLENOID
7. THROTTLEOPENER & BRACKET ASSEMBLY	51. SOLENOID ASSY.-AIR FUEL RATIO
8. SOLENOID ASSY.-IDLE SHUT OFF	52. "O"-RING-SOLENOID (TOP)
9. GASKET-IDLE SHUT OFF SOLENOID	53. "O"-RING-SOLENOID (BOTTOM)
10. SCREW & LOCK WASHER-BRACKET	54. "O"-RING-SLOW AIR BLEED
11. BRACKET-PUMP STROKE LIMITER	55. JET-SEC. SLOW AIR BLEED
12. RETAINER-PIN	56. SPRING-PUMP RETURN
13. PIN-PUMP LEVER	57. BALL-PUMP INTAKE CHECK
14. PIVOT SCREW-PUMP LEVER	58. WEIGHT-PUMP DISCHARGE
15. LEVER & ROD ASSY.-PUMP	59. SPRING-PUMP DISCHARGE BRACKET
16. WASHER-PUMP LEVER SCREW	60. WEIGHT-PUMP DISCHARGE
17. LOCK WASHER-PUMP LEVER SCREW	61. BALL-PUMP INTAKE CHECK
18. SPRING-PUMP LEVER	62. RETAINER-SEC. DIAPHRAGM ROD
19. POP RIVET (2)-RETAINER	63. SCREW & LKWSHR. (2)-SEC. DIAPHRAGM ASSY.
20. SCREW & LKWSHR.-RETAINER	64. SECONDARY THROTTLE VALVE DIAPHRAGM ASSY.
21. RETAINER-CHOKE COVER	65. GASKET-SEC. DIAPHRAGM ASSY.
22. CHOKE COVER ASSY.-ELECTRIC	66. SCREW & LKWSHR.-THROTTLE BODY
23. PLATE-STOPPER	67. SCREW & LKWSHR.-THROTTLE BODY
24. SPRING-THROTTLE LINK RETURN	68. BOWL ASSEMBLY
25. SCREW & LKWSHR.-BRACKET	69. PLUG-PRI SLOW JET
26. BRACKET-SPRING	70. JET-PRI SLOW
27. COTTER PIN-FAST IDLE LINK	71. JET-PRI. MAIN AIR BLEED
28. WASHER-FAST IDLE LINK	72. JET-SEC. MAIN AIR BLEED
29. SCREW (2)-CHOKE VALVE	73. PLUG-SEC. SLOW JET
30. VALVE-CHOKE	74. JET-SEC. SLOW
31. SCREW & LKWSHR.-LEVER	75. SCREW & LKWSHR. (2)-CLAMP
32. SHAFT-CHOKE	76. CLAMP-WINDOW
33. LEVER-CHOKE SHAFT	77. GASKET-CLAMP
34. SCREW & LKWSHR. (2)-CHOKE HOUSING	78. WINDOW-FUEL BOWL
35. CHOKE HOUSING ASSY.	79. "O"-RING-WINDOW
36. SCREW-CHOKE PULL OFF BRACKET	80. RETAINER-PLUGS
37. CHOKE PULLOFF ASSY.	81. PLUG-PRI MAIN JET
38. SCREW & LKWSHR.-BRACKET	82. GASKET-PLUG
39. BRACKET-FUEL FITTING	83. JET-PRI. MAIN
40. SCREW & LKWSHR. (2)-BOWL COVER	84. PLUG-SEC. MAIN JET
41. BOWL COVER ASSEMBLY	85. GASKET-PLUG
42. GASKET-BOWL COVER	86. JET-SEC. MAIN
43. PIN-FLOAT	87. GASKET-THROTTLE BODY
44. FLOAT & LEVER ASSY.	88. PLUG-IDLE ADJ. NEEDLE
	89. NEEDLE-IDLE ADJUSTING
	90. SPRING-IDLE NEEDLE
	91. WASHER-IDLE NEEDLE
	92. "O"-RING-IDLE NEEDLE
	93. THROTTLE BODY ASSEMBLY

CLEANING

CLEANING MUST BE DONE WITH CARBURETOR DISASSEMBLED. SOAK PARTS LONG ENOUGH TO SOFTEN AND REMOVE ALL FOREIGN MATERIAL. USE A CARBURETOR CLEANING SOLVENT. MAKE CERTAIN THE THROTTLE BODY IS FREE OF ALL CARBON DEPOSITS. WASH OFF IN SUITABLE SOLVENT. BLOW OUT ALL PASSAGES IN CASTINGS WITH COMPRESSED AIR AND CHECK CAREFULLY TO INSURE THOROUGH CLEANING OF OBSCURE AREAS. CAUTION: DO NOT SOAK ASSEMBLIES WITH ATTACHED PLASTIC PARTS FOR A LONG PERIOD OF TIME. DO NOT SOAK PARTS SUCH AS (3), (7), (8), (22), (37), (44), (46), (51), & (64) IN ANY TYPE OF CLEANING SOLVENTS.

REASSEMBLY

REASSEMBLE IN REVERSE ORDER OF DISASSEMBLY. NOTE SPECIAL INSTRUCTIONS AND FOLLOW NUMERICAL OUTLINE IN MAKING ADJUSTMENTS NECESSARY FOR CARBURETOR BEING SERVICED.

SPECIAL INSTRUCTIONS

IDLE ADJUSTING NEEDLE (89)-TURN IN UNTIL LIGHTLY SEATED, THEN BACK OUT 4 TURNS.

PUMP RETURN SPRING (56)-INSTALL WITH CROSS WIRE TO THE BOTTOM OF PUMP CYLINDER.

"O"-RINGS (52) & (53)-LIGHTLY LUBRICATE "O"-RINGS BEFORE INSTALLING AIR FUEL RATIO SOLENOID.

CHECK FAST IDLE AND CHOKE UNLOADER ADJUSTMENT BEFORE ASSEMBLING CHOKE COVER (22).

AUTO CHOKE COVER (22)-CANADA MODELS SET AT INDEX, ALL U. S. A. MODELS ARE NON ADJUSTABLE.

ADJUSTMENTS

① BOWL COVER INVERTED, RAISE FLOAT AND THEN LOWER IT SLOWLY UNTIL FLOAT SEAT MAKES CONTACT WITH STEM OF NEEDLE VALVE. (DO NOT COMPRESS SPRING LOADED NEEDLE.)

③ TO ADJUST BEND FLOAT SEAT.

12 MM
.470"

② MEASURE DISTANCE BETWEEN END OF FLOAT AND BOWL COVER.

CAUTION: DO NOT EXERT PRESSURE ON RESILIENT NEEDLE VALVE.

DRY FLOAT LEVEL ADJUSTMENT

FIG. 1

① BOWL COVER INVERTED, RAISE FLOAT UNTIL FLOAT STOPPER CONTACTS CARBURETOR BODY.

NOTE: REMOVE NEEDLE PULLCLIP TO MAKE THIS ADJUSTMENT.

③ TO ADJUST BEND FLOAT STOPPER.

② MEASURE DISTANCE BETWEEN FLOAT SEAT AND STEM OF NEEDLE VALVE.

1.3-1.7 MM
.051"-.067"

FLOAT DROP ADJUSTMENT

FIG. 2

③ TO ADJUST BEND LIMITER STOP.

② GAUGE IN PLACE, TOP OF PUMP LEVER SLOT SHOULD JUST TOUCH PIN.

1.27 +/- .20 MM
.050" +/- .007

① PLACE A PIECE OF ROUND STOCK OF PROPER THICKNESS BETWEEN PRIMARY THROTTLE VALVE & BORE OF CARBURETOR.

PUMP STROKE LIMITER ADJUSTMENT

FIG. 3

② MEASURE CLEARANCE BETWEEN LOWER EDGE OF PRIMARY VALVE AND THROTTLE BORE.

③ TO ADJUST TURN FAST IDLE SCREW.

① PLACE FAST IDLE ARM ON SECOND STEP OF FAST IDLE CAM.

.80 +/- .07 MM
.031" +/- .002"

FAST IDLE ADJUSTMENT (BENCH)

FIG. 4

② APPLY OUTSIDE VACUUM SOURCE TO FULLY SEAT DIAPHRAGM PLUNGER.

④ MEASURE DISTANCE BETWEEN UPPER EDGE OF CHOKE VALVE AND AIR HORN WALL.

③ TO ADJUST BEND TONGUE

1.70 +/- .090
.067" +/- .003"

① PLACE FAST IDLE ARM ON SECOND STEP OF FAST IDLE CAM. (SEE FIG. 4.)

③ PRESS CHOKE VALVE TOWARDS THE CLOSED POSITION, EXTENDING 2-PIECE STEM FULLY. (DO NOT PULL DIAPHRAGM OFF ITS SEAT.)

VACUUM BREAK ADJUSTMENT

FIG. 5

② HOLD CHOKE VALVE TOWARD CLOSED POSITION. MEASURE DISTANCE BETWEEN UPPER EDGE OF CHOKE VALVE AND AIR HORN WALL.

2.36 MM
.093"

③ TO ADJUST BEND UNLOADER TONGUE.

① HOLD THROTTLE VALVE IN WIDE OPEN POSITION.

CHOKE UNLOADER ADJUSTMENT

FIG. 6

① OPEN PRIMARY THROTTLE LEVER UNTIL ADJUSTING PLATE COMES IN CONTACT WITH LOCK LEVER.

CLEARANCE
6.28 +/- .60 MM
.247" +/- .024"

③ TO ADJUST BEND TONGUE.

② MEASURE DISTANCE BETWEEN PRIMARY VALVE AND INNER WALL.

SECONDARY THROTTLE START TO OPEN ADJUSTMENT.

FIG. 7

2300-2500 R.P.M. M/T CAN.

③ TO ADJUST LOOSEN LOCKNUT AND TURN DASH POT ASSY. OR ADJ. SCREW. TIGHTEN LOCKNUT.

② OPEN THROTTLE BY HAND, SLOWLY RETURN THROTTLE UNTIL THROTTLE LEVER JUST TOUCHES DASH POT PLUNGER. CHECK R.P.M. AT THIS POINT

① CURB IDLE ADJUSTED

DASH POT ADJUSTMENT

FIG. 8