

INSTRUCTION SHEET

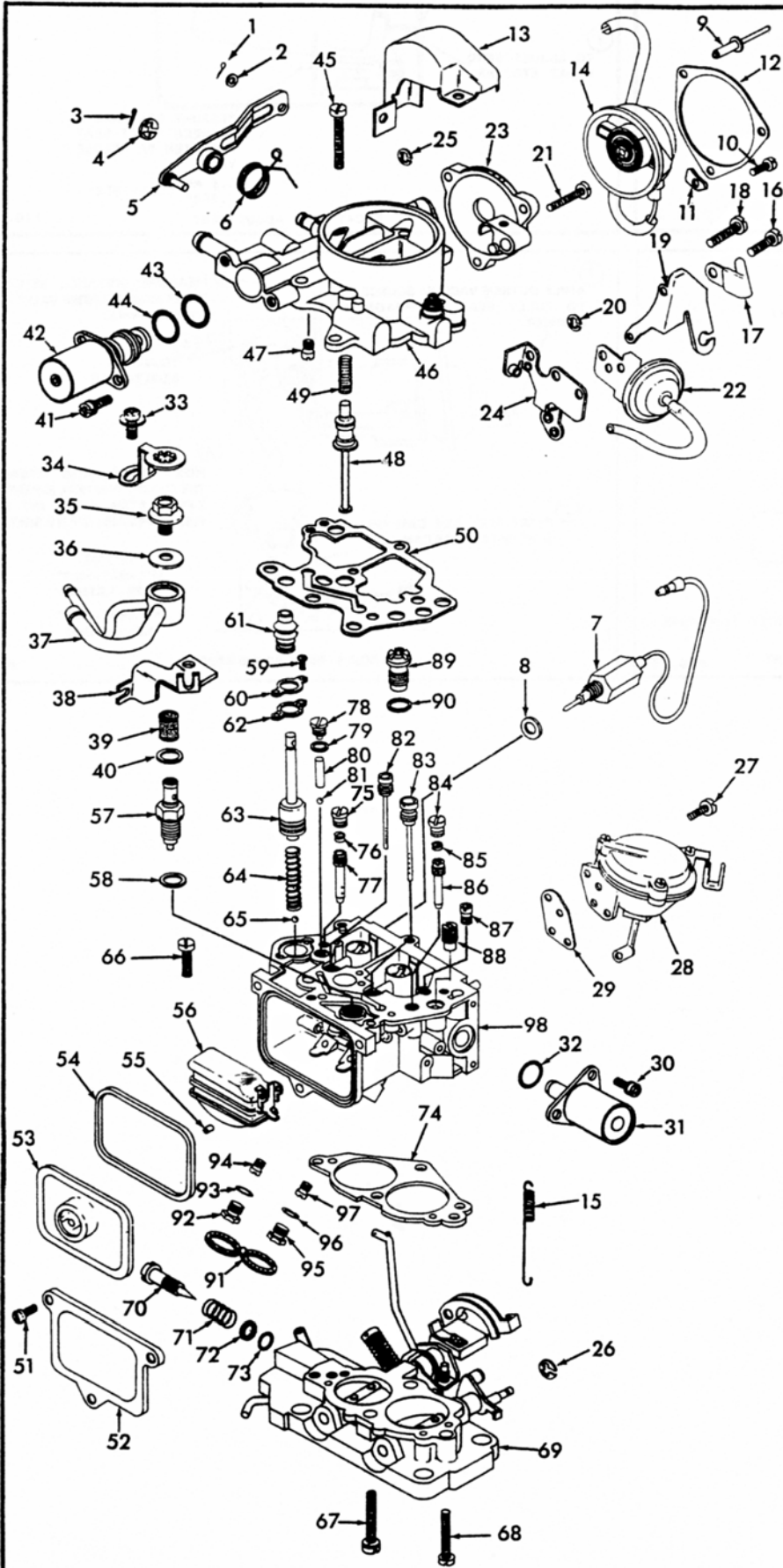
OFF VEHICLE CARBURETOR SERVICE

HITACHI MODEL - DCH 340

50-616-1

LUV-SERIES 11 & "S" SERIES TRUCK

GENERAL EXPLODED VIEW
THE GENERAL DESIGN AND PARTS SHOWN WILL VARY TO
INDIVIDUAL UNITS COVERED ON THIS INSTRUCTION SHEET.



DISASSEMBLY

USE THE EXPLODED VIEW AS A GUIDE. THE NUMERICAL SEQUENCE MAY GENERALLY BE FOLLOWED TO DISASSEMBLE UNIT FAR ENOUGH TO PERMIT CLEANING AND INSPECTION. CAUTION: BE CAREFUL TO NOTE SIZES OF ALL JETS AND THEIR LOCATION FOR PROPER ASSEMBLY. RECORD SIZES BELOW. DRILL POP RIVET HEADS OFF TO REMOVE COVER (13). KNOCK OUT IDLE MIXTURE NEEDLE PLUG BY INSERTING PUNCH THRU SLIT IN BASE OF CARBURETOR.

NOMENCLATURE

REF. NO.	REF. NO.
1. COTTER PIN - PUMP ROD	48. POWER PISTON ASSY.
2. WASHER - PUMP ROD	49. SPRING - POWER INJECTOR
3. COTTER PIN - PUMP LEVER PIN	50. GASKET - AIR HORN
4. RETAINER - PUMP LEVER	51. SCREW 3 - CC /ER
5. LEVER - PUMP	52. COVER - LEVEL GAUGE
6. SPRING - PUMP LEVER	53. GAUGE - LEVEL
7. SOLENOID ASSY. - ANTI DIESELING	54. SEAL - LEVEL GAUGE
8. GASKET - SOLENOID	55. COLLAR - FLG
9. POP RIVETS (4) - CHOKE COVER	56. FLOAT & LEVER ASSY.
10. SCREW & LOCKWASHER - RETAINER	57. NEEDLE & SEAT ASSY.
11. SPACER - RETAINER	58. GASKET (SERVICE) - NEEDLE SEAT
12. RETAINER - CHOKE COVER	59. SCREW & LOCKWASHER (2) - PUMP PLATE
13. COVER - CHOKE LINKAGE	60. PLATE - PUMP
14. CHOKE COVER ASSY. - ELECTRIC	61. BOOT - PUMP
15. SPRING - SEC. THROTTLE RETURN	62. GASKET - PUMP PLATE
16. SCREW & LOCKWASHER - CLAMP TO BRACKET	63. PUMP ASSEMBLY
17. CLAMP - WIRE	64. SPRING - PUMP RETURN
18. SCREW & LOCKWASHER - BRACKET	65. BALL (METAL) - PUMP INTAKE CHECK
19. BRACKET - CABLE	66. SCREW & LOCKWASHER (1) - THROTTLE BODY
20. RETAINER - VACUUM BREAK LINK	67. SCREW & LOCKWASHER (1) - THROTTLE BODY (HOLLOW)
21. SCREW & LOCKWASHER - CHOKE HOUSING	68. SCREW & LOCKWASHER (2) - THROTTLE BODY
22. VACUUM BREAK & HOSE ASSY.	69. THROTTLE BODY ASSY.
23. HOUSING - CHOKE COVER	70. NEEDLE - IDLE ADJUSTING
24. BRACKET - SEC. RETURN SPRING	71. SPRING - IDLE ADJ. NEEDLE
25. E CLIP - (UPPER) FAST IDLE LINK	72. WASHER - IDLE NEEDLE SEAL
26. RETAINER - SEC. DIAPHRAGM ROD	73. SEAL - IDLE ADJ. NEEDLE
27. SCREW & LOCKWASHER (3) - SEC. DIAPHRAGM ASSY.	74. GASKET - THROTTLE BODY
28. SECONDARY DIAPHRAGM ASSY.	75. PLUG - PRI. SLOW JET
29. GASKET - SEC. DIAPHRAGM ASSY.	76. SPRING - PRI. SLOW JET
30. SCREW & LOCKWASHER (3) - COASTING SOLENOID	77. JET - PRI. SLOW
31. SOLENOID ASSY. - COASTING	78. PLUG - PUMP DISC. BALL
32. O-RING - COASTING SOLENOID ASSY.	79. GASKET - PLUG
33. SCREW & LOCKWASHER - LOCK	80. WEIGHT - PUMP DISC. BALL
34. LOCK - BANJO BOLT	81. BALL - PUMP DISC. (METAL)
35. BOLT - BANJO	82. JET - PRI. MAIN AIR BLEED
36. WASHER - BANJO BOLT (UPPER)	83. JET - SEC. MAIN AIR BLEED
37. BANJO - FUEL INLET	84. PLUG - SEC. SLOW JET
38. BRACKET (STOP) - FUEL INLET BANJO	85. SPRING - SEC. SLOW JET
39. SCREEN - FUEL INLET	86. JET - SEC. SLOW
40. WASHER - BANJO (LOWER)	87. JET - AIR BLEED
41. SCREW & LOCKWASHER (2) - BOWL VENT SOLENOID	88. JET - COASTING
42. SOLENOID ASSY. - BOWL VENT	89. POWER VALVE ASSY.
43. O-RING (OUTER) - BOWL VENT SOLENOID	90. GASKET - POWER VALVE
44. O-RING (INNER) - BOWL VENT SOLENOID	91. LOCK TAB - PLUGS
45. SCREW & LOCKWASHER (3) - AIR HORN	92. PLUG - PRI. MAIN JET
46. AIR HORN ASSEMBLY	93. GASKET - PLUG
47. JET - PRI. SLOW AIR BLEED	94. JET - PRI. MAIN
	95. PLUG - SEC. MAIN JET
	96. GASKET - PLUG
	97. JET - SEC. MAIN
	98. BOWL ASSEMBLY.

CLEANING

CLEANING MUST BE DONE WITH CARBURETOR DISASSEMBLED. SOAK PARTS LONG ENOUGH TO SOFTEN AND REMOVE ALL FOREIGN MATERIAL. USE A CARBURETOR CLEANING SOLVENT. MAKE CERTAIN THE THROTTLE BODY IS FREE OF ALL CARBON DEPOSITS. WASH OFF IN SUITABLE SOLVENT. BLOW OUT PASSAGES IN CASTINGS WITH COMPRESSED AIR AND CHECK CAREFULLY FOR CLEANING OF OBSCURE AREAS. CAUTION: DO NOT SOAK RUBBER PARTS, SOLENOIDS (31), (42), DIAPHRAGM UNITS (22), (28), FLOAT (56), OR ELECTRIC CHOKE COVER ASSY. (14) IN ANY TYPE OF CLEANING SOLVENT.

REASSEMBLY

REASSEMBLE IN REVERSE ORDER OF DISASSEMBLY. NOTE SPECIAL INSTRUCTIONS AND ADJUSTMENTS.

SPECIAL INSTRUCTIONS

IDLE ADJUSTING NEEDLE (70) - TURN NEEDLE IN UNTIL LIGHTLY SEATED THEN BACK OUT TWO TURNS FOR FEDERAL & 1 TURN FOR CALIF. (DO NOT INSTALL PLUG AT THIS TIME).

NEEDLE AND SEAT (57) - INSTALL GASKET (58) - ON SERVICE NEEDLE & SEAT BEFORE INSTALLING.

LEVEL GAUGE COVER SCREWS (51) - TIGHTEN SCREWS DOWN EVENLY. (DO NOT OVER TIGHTEN.)

ADJUSTMENTS

