

INSTRUCTION SHEET

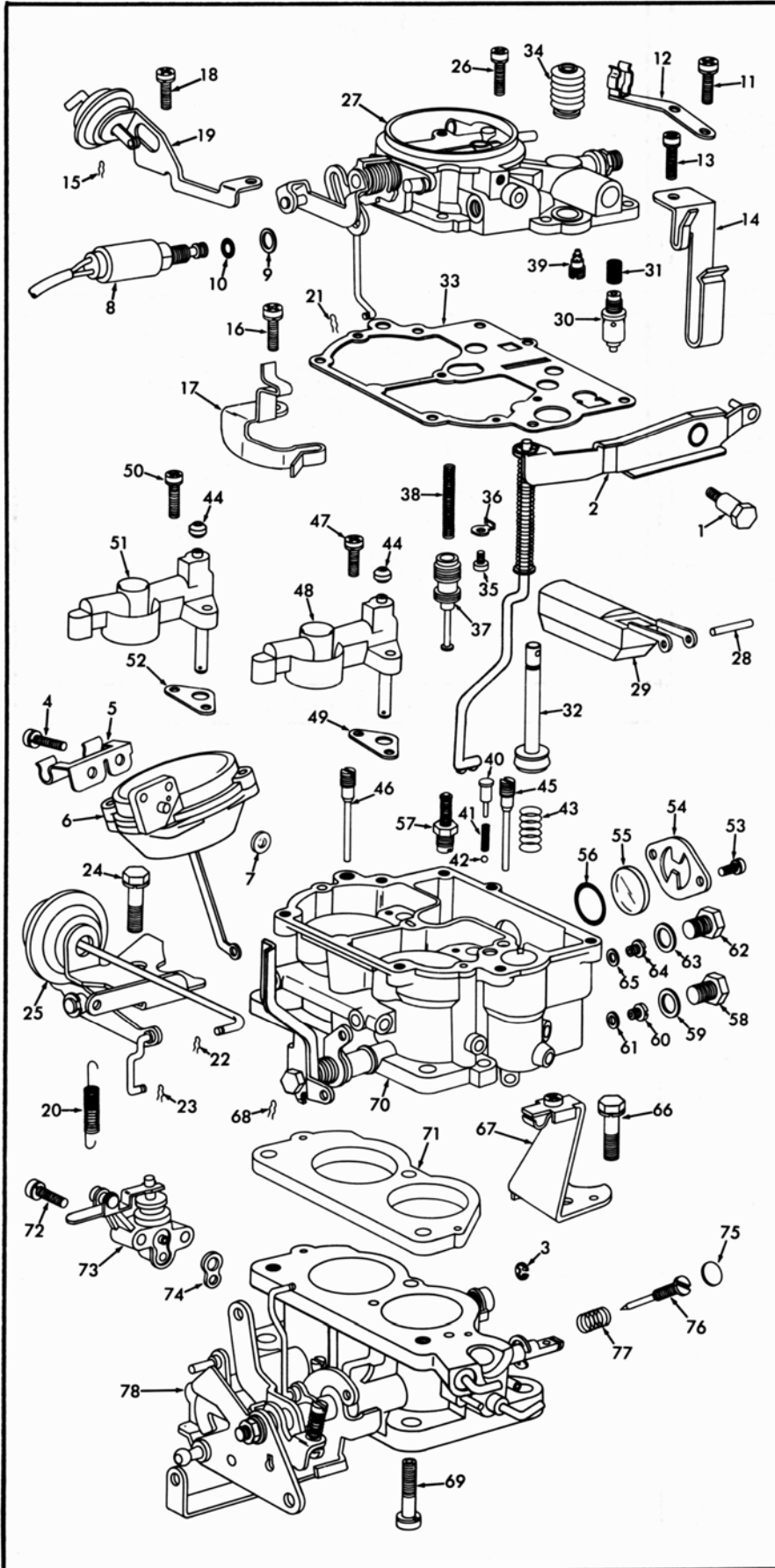
OFF VEHICLE CARBURETOR SERVICE

AISAN 2-BARREL

TOYOTA 2F ENGINE MODEL FJ60

GENERAL EXPLODED VIEW

THE GENERAL DESIGN AND PARTS SHOWN WILL VARY
TO INDIVIDUAL UNITS COVERED ON THIS INSTRUCTION SHEET.



DISASSEMBLY

USE EXPLODED VIEW AS A GUIDE. THE NUMERICAL SEQUENCE MAY GENERALLY BE FOLLOWED TO DISASSEMBLE UNIT FAR ENOUGH TO PERMIT CLEANING AND INSPECTION. NOTE: DISASSEMBLY OF THE SECONDARY VACUUM UNIT (8) IS NOT NECESSARY UNLESS DIAPHRAGM IS BEING REPLACED. INSULATOR BLOCK (68) HAS A BONDED GASKET ON EACH SURFACE, IT WILL BE NECESSARY TO CAREFULLY REMOVE OLD GASKETS FROM BLOCK. RECORD SIZES OF JETS AND THEIR LOCATION FOR PROPER ASSEMBLY. TO REMOVE IDLE MIXTURE NEEDLE PLUG, CENTER PUNCH CENTER OF PLUG. CAREFULLY DRILL A HOLE IN PLUG. (NOTE THERE IS ONLY .040" CLEARANCE BETWEEN PLUG AND MIXTURE NEEDLE.) USE A PULLER OR PRY PLUG FROM HOLE.

NOMENCLATURE

REF. NO.	REF. NO.
1. SCREW - PUMP LEVER	38. SPRING - POWER PISTON
2. PUMP LEVER & ROD ASSY.	39. JET - PRI. SLOW AIR ---
3. E-CLIP - SEC. DIAPHRAGM LINK	40. STOPPER - PUMP CHECK SPRING
4. SCREW & LOCKWASHER (2) - SEC. DIAPHRAGM ASSY. & HOSE BRACKET	41. SPRING - PUMP CHECK BALL
5. BRACKET - HOSE	42. BALL - PUMP DISC. CHECK
6. SECONDARY DIAPHRAGM ASSY.	43. SPRING - PUMP RETURN
7. GASKET - SEC. DIAPHRAGM ASSY.	44. SEAL (2) - VENTURI CLUSTER
8. SOLENOID ASSY. - IDLE SHUT OFF	45. JET - PRI. SLOW ---
9. GASKET - SOLENOID	46. JET - SEC. SLOW ---
10. O-RING - SOLENOID	47. SCREW & LOCKWASHER (2) - PRI. VENTURI
11. SCREW & LOCKWASHER (2) - WIRE SOCKET BRACKET	48. PRI. VENTURI ASSY.
12. BRACKET - WIRE SOCKET	49. GASKET - VENTURI
13. SCREW & LOCKWASHER - HOSE & WIRE BRACKET	50. SCREW & LOCKWASHER (2) - SEC. VENTURI
14. BRACKET - HOSE & WIRE	51. SEC. VENTURI ASSY.
15. RETAINER - CHOKE PULL OFF ROD	52. GASKET - VENTURI
16. SCREW & LOCKWASHER - WIRE BRACKET & CHOKE PULL OFF ASSY.	53. SCREW (2) - WINDOW RETAINER
17. BRACKET - WIRE	54. RETAINER - WINDOW
18. SCREW & LOCKWASHER - CHOKE PULL OFF BRACKET	55. WINDOW - FUEL BOWL
19. CHOKE PULL OFF DIAPHRAGM ASSY.	56. O-RING - FUEL BOWL WINDOW
20. SPRING - SEC. THROTTLE RETURN	57. POWER VALVE ASSY.
21. RETAINER - FAST IDLE ROD	58. PLUG - PRI. MAIN JET
22. RETAINER - THROTTLE POSITIONER ROD	59. GASKET - PLUG
23. RETAINER - LINK	60. JET - PRI. MAIN (BRASS) ---
24. SCREW & LOCKWASHER - THROTTLE POSITIONERS ASSY.	61. GASKET - PRI. MAIN JET
25. THROTTLE POSITIONER, BRACKET & LEVER ASSY.	62. PLUG - SEC. MAIN JET
26. SCREW & LOCKWASHER (2) - BOWL COVER	63. GASKET - PLUG
27. BOWL COVER ASSY.	64. JET - SEC. MAIN (CROME) ---
28. PIN - FLOAT	65. GASKET - SEC. MAIN JET
29. FLOAT & LEVER ASSY.	66. SCREW & LOCKWASHER - BRACKET & THROTTLE BODY
30. NEEDLE & SEAT ASSY.	67. BRACKET - CHOKE CABLE
31. SCREEN - NEEDLE SEAT	68. RETAINER - UNLOADER LINK
32. PUMP PLUNGER ASSY.	69. SCREW & LOCKWASHER - THROTTLE BODY
33. GASKET - BOWL COVER	70. FLOAT BOWL ASSY.
34. BOOT - PUMP	71. INSULATOR BLOCK & GASKETS - THROTTLE BODY
35. SCREW & LOCKWASHER - LOCK	72. SCREW & LOCKWASHER (2) - SEC. IDLE SHUT OFF
36. LOCK - POWER PISTON	73. SEC. IDLE SHUT OFF VALVE ASSY.
37. POWER PISTON	74. GASKET - SEC. IDLE VALVE ASSY.
	75. PLUG - IDLE NEEDLE
	76. NEEDLE - IDLE ADJUSTING
	77. SPRING - IDLE NEEDLE
	78. THROTTLE BODY ASSY.

CLEANING

CLEANING MUST BE DONE WITH CARBURETOR DISASSEMBLED. USE A CARBURETOR CLEANING SOLVENT. SOAK PARTS LONG ENOUGH TO SOFTEN AND REMOVE ALL FOREIGN MATERIAL. MAKE CERTAIN THE THROTTLE BORES ARE FREE OF ALL CARBON DEPOSITS. WASH OFF IN SUITABLE SOLVENT. BLOW OUT ALL PASSAGES IN CASTINGS WITH COMPRESSED AIR AND CHECK CAREFULLY TO INSURE THOROUGH CLEANING OF OBSCURE AREAS. CAUTION: DO NOT SOAK RUBBER PARTS, SOLENOID (8), DIAPHRAGM ASSY'S. (6) (19) (25), OR FLOAT (29) IN CLEANING SOLVENTS.

REASSEMBLY

REASSEMBLE IN REVERSE ORDER OF DISASSEMBLY. NOTE SPECIAL INSTRUCTIONS AND ADJUSTMENTS.

SPECIAL INSTRUCTIONS

IDLE ADJUSTING NEEDLE (76) - TURN NEEDLE IN UNTIL LIGHTLY SEATED, THEN BACK OUT 3 TURNS.

PUMP PLUNGER (32) - REMOVE PAPER SLEEVE FROM LEATHER CUP, FLEX LEATHER OUTWARD SLIGHTLY. SOAK CUP IN LIGHT OIL A FEW MINUTES PRIOR TO PLACING IN CARBURETOR.

ADJUSTMENTS

