

INSTRUCTION SHEET

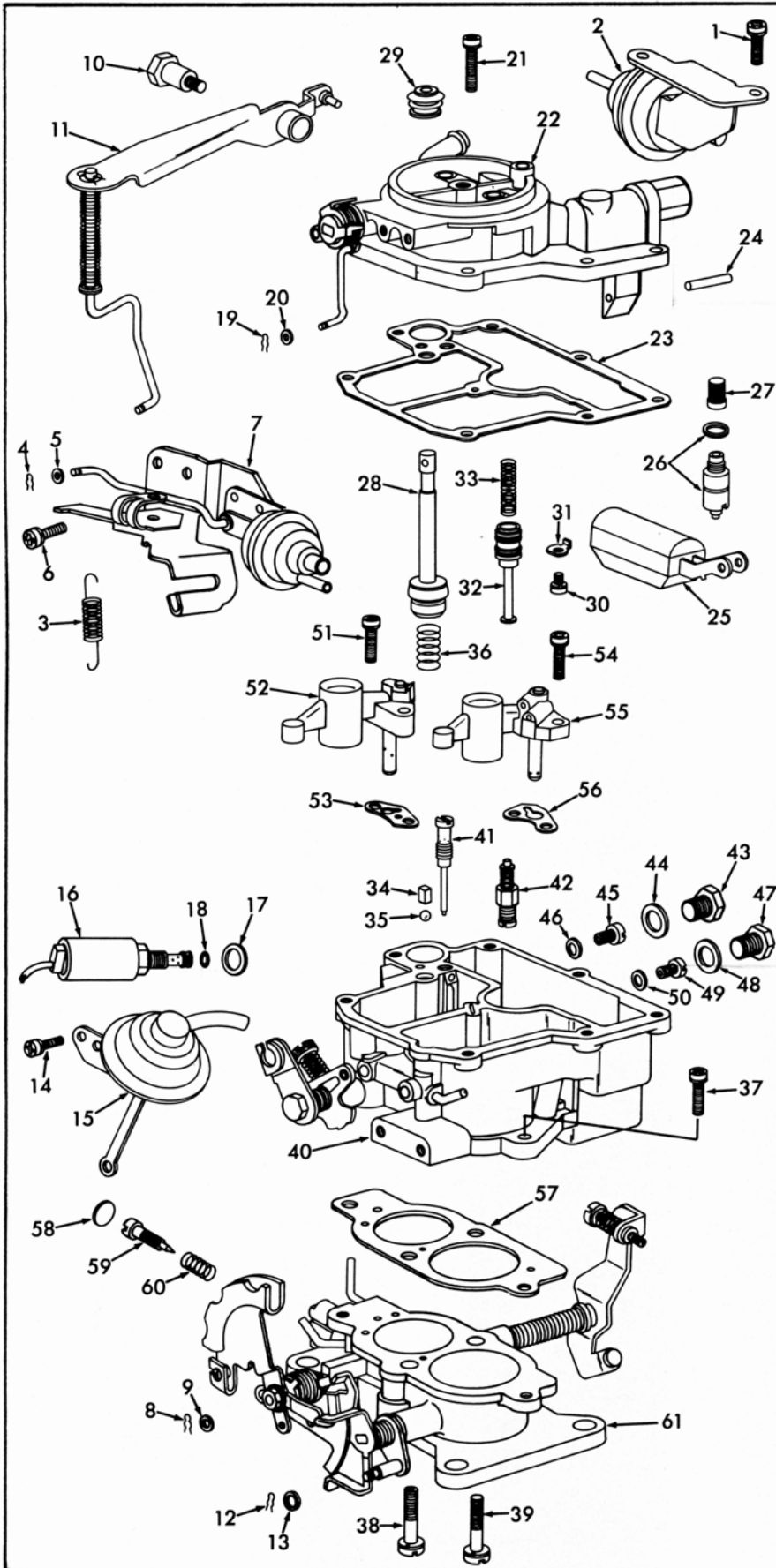
OFF VEHICLE CARBURETOR SERVICE

AISAN 2-BARREL

TOYOTA 4KC ENGINE

GENERAL EXPLODED VIEW

THE GENERAL DESIGN AND PARTS SHOWN WILL VARY TO INDIVIDUAL UNITS COVERED ON THIS INSTRUCTION SHEET.



DISASSEMBLY

USE EXPLODED VIEW AS A GUIDE. THE NUMERICAL SEQUENCE MAY GENERALLY BE FOLLOWED TO DISASSEMBLE UNIT FAR ENOUGH TO PERMIT CLEANING AND INSPECTION. NOTE SIZE OF JETS AND THEIR LOCATION FOR PROPER ASSEMBLY.

NOMENCLATURE

REF. NO.	REF. NO.
1. SCREW & LOCKWASHER (2) - POSITIONER	32. PISTON - POWER VALVE
2. POSITIONER ASSY.	33. SPRING - POWER PISTON
3. SPRING - SEC. THROTTLE RETURN	34. WEIGHT - BALL
4. RETAINER - CHOKE PULL OFF ROD	35. BALL - PUMP DISCHARGE
5. WASHER - CHOKE PULL OFF ROD	36. SPRING - PUMP RETURN
6. SCREW & LOCKWASHER (2) - BRACKET CHOKE PULL OFF	37. SCREW & LOCKWASHER (2) - THROTTLE BODY
7. CHOKE PULL OFF & BRACKET ASSY.	38. SCREW & LOCKWASHER (HOLLOW) - THROTTLE BODY
8. RETAINER - PUMP ROD	39. SCREW & LOCKWASHER - THROTTLE BODY
9. WASHER - PUMP ROD	40. FLOAT BOWL ASSY.
10. SCREW - PUMP LEVER	41. JET - IDLE
11. LEVER & ROD ASSY. - PUMP	42. POWER VALVE ASSY.
12. RETAINER - SEC. DIAPHRAGM LINK	43. PLUG - PRI. MAIN JET
13. WASHER - SEC. DIAPHRAGM LINK	44. GASKET - PLUG
14. SCREW & LOCKWASHER (2) - SEC. DIAPHRAGM	45. JET - PRI. MAIN (BRASS)
15. SECONDARY DIAPHRAGM ASSY.	46. GASKET - PRI. JET
16. SOLENOID ASSY. - IDLE CUT OFF	47. PLUG - SEC. MAIN JET
17. GASKET - SOLENOID	48. GASKET - PLUG
18. O RING - SOLENOID	49. JET - SEC. MAIN (CHROME)
19. RETAINER (LOWER) - FAST IDLE ROD	50. GASKET - SEC. JET
20. WASHER - FAST IDLE ROD	51. SCREW & LOCKWASHER (2) - PRI. VENTURI
21. SCREW & LOCKWASHER (5) - BOWL COVER	52. PRI. VENTURI ASSY.
22. BOWL COVER ASSY.	53. GASKET - PRI. VENTURI
23. GASKET - BOWL COVER	54. SCREW & LOCKWASHER (2) - SEC. VENTURI
24. PIN - FLOAT	55. SEC. VENTURI ASSY.
25. FLOAT & LEVER ASSY.	56. GASKET - SEC. VENTURI
26. NEEDLE & SEAT ASSY.	57. GASKET - THROTTLE BODY
27. SCREEN - FUEL FILTER	58. PLUG - IDLE NEEDLE
28. PUMP ASSY.	59. NEEDLE - IDLE MIXTURE
29. BOOT - PUMP	60. SPRING - IDLE NEEDLE
30. SCREW & LOCKWASHER - PISTON RETAINER	61. THROTTLE BODY ASSY.
31. RETAINER - PISTON	

CLEANING

CLEANING MUST BE DONE WITH CARBURETOR DISASSEMBLED. SOAK PARTS LONG ENOUGH TO SOFTEN AND REMOVE ALL FOREIGN MATERIAL. USE A CARBURETOR CLEANING SOLVENT. MAKE CERTAIN THE THROTTLE BODY IS FREE OF ALL CARBON DEPOSITS. WASH OFF IN SUITABLE SOLVENT. BLOW OUT ALL PASSAGES IN CASTINGS WITH COMPRESSED AIR AND CHECK CAREFULLY TO INSURE THOROUGH CLEANING OF OBSCURE AREAS. CAUTION: DO NOT SOAK PARTS CONTAINING DIAPHRAGMS OR RUBBER COMPONENTS. THIS INCLUDES ITEMS SUCH AS (2), (7), (15), (16), (25), (29) IN ANY TYPE OF CLEANING SOLVENT.

REASSEMBLY

REASSEMBLE IN REVERSE ORDER OF DISASSEMBLY. NOTE SPECIAL INSTRUCTIONS AND FOLLOW NUMERICAL OUTLINE IN MAKING ADJUSTMENTS NECESSARY FOR CARBURETOR BEING SERVICED.

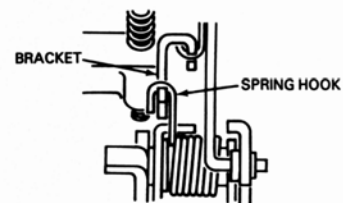
SPECIAL INSTRUCTIONS

TO REMOVE IDLE MIXTURE NEEDLE PLUG CENTER PUNCH CENTER OF PLUG. CAREFULLY DRILL A HOLE IN PLUG. (NOTE THERE IS ONLY .040" CLEARANCE BETWEEN PLUG AND MIXTURE NEEDLE.) USE A PULLER OR PRY PLUG FROM HOLE.

IDLE ADJUSTING NEEDLE (59) - TURN NEEDLE IN UNTIL LIGHTLY SEATED. THEN BACK OUT 3 TURNS. (DO NOT INSTALL IDLE LIMITER CAP AT THIS TIME.)

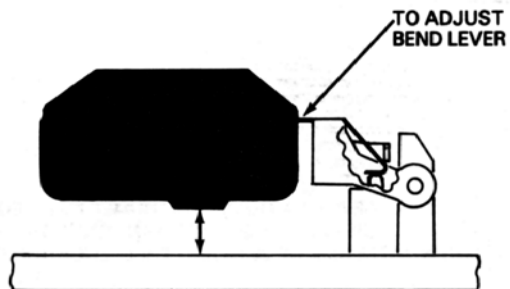
PUMP PLUNGER (28) - REMOVE PAPER SLEEVE FROM LEATHER CUP, FLEX LEATHER OUTWARDS SLIGHTLY. SOAK CUP IN LIGHT OIL A FEW MINUTES PRIOR TO PLACING IN CARBURETOR.

WHEN INSTALLING FLOAT BOWL TO THROTTLE BODY, BE SURE TO HOOK THROTTLE RETURN SPRING IN NOTCH OF BRACKET ON FLOAT BOWL.



ADJUSTMENTS

BOWL COVER INVERTED, FLOAT RESTING ON SPRING LOADED NEEDLE OF ITS OWN WEIGHT. MEASURE DISTANCE BETWEEN RAISED PORTION OF FLOAT AND CASTING SURFACE.

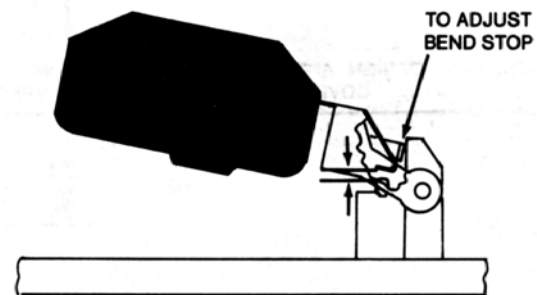


7.5MM - .295" SETTING

DRY FLOAT LEVEL ADJUSTMENT

FIG. 1

BOWL COVER INVERTED. RAISE FLOAT BY HAND UNTIL IT CONTACTS FLOAT HANGER. MEASURE DISTANCE BETWEEN NEEDLE VALVE PUSH PIN AND FLOAT TAB.

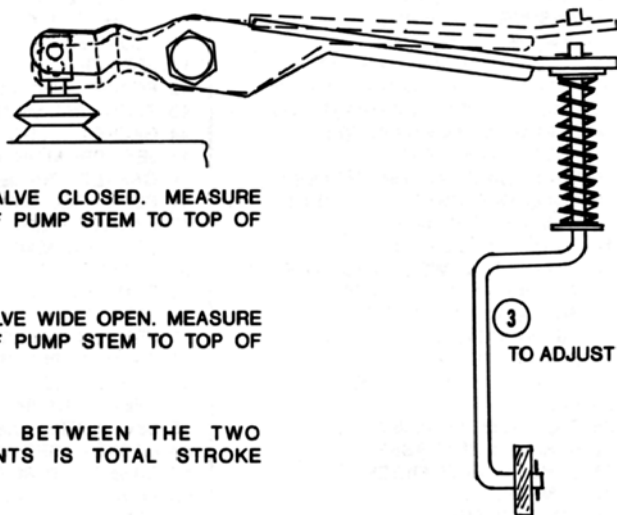


.9MM - .035" SETTING

FLOAT DROP ADJUSTMENT

FIG. 2

5.MM - .197" SETTING



- ① THROTTLE VALVE CLOSED. MEASURE FROM TOP OF PUMP STEM TO TOP OF BOWL COVER
- ② THROTTLE VALVE WIDE OPEN. MEASURE FROM TOP OF PUMP STEM TO TOP OF BOWL COVER.

DIFFERENCE BETWEEN THE TWO MEASUREMENTS IS TOTAL STROKE TRAVEL.

PUMP ADJUSTMENT

FIG. 3