

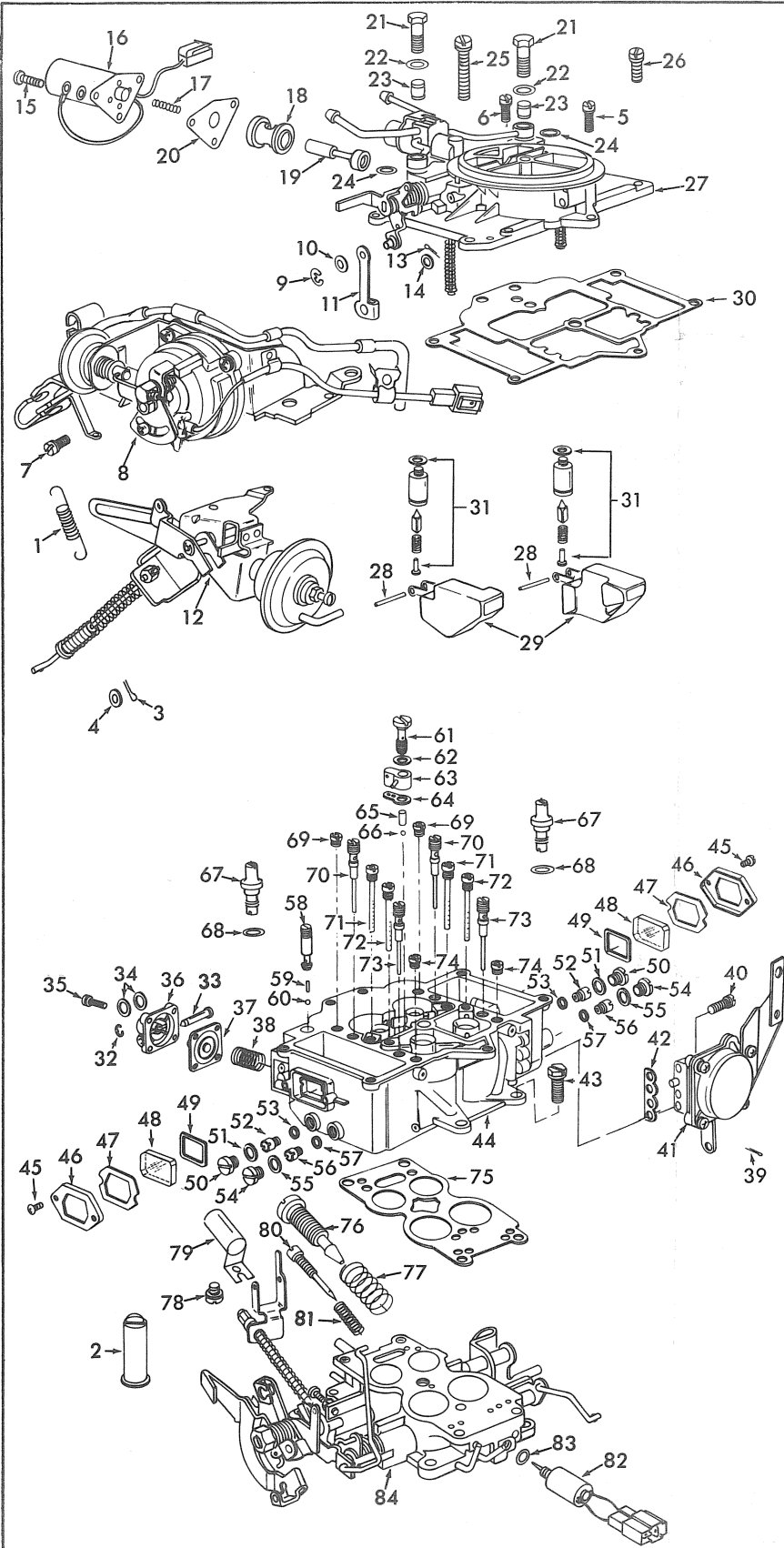
# INSTRUCTION SHEET

## NIKKI CARBURETOR - 4 BORE

### MAZDA ROTARY

#### GENERAL EXPLODED VIEW

THE GENERAL DESIGN AND PARTS SHOWN WILL VARY TO INDIVIDUAL UNITS COVERED ON THIS INSTRUCTION SHEET.



#### DISASSEMBLY

USE EXPLODED VIEW AS A GUIDE. THE NUMERICAL SEQUENCE MAY GENERALLY BE FOLLOWED TO DISASSEMBLE UNIT FAR ENOUGH TO PERMIT CLEANING AND INSPECTION. NOTE: JETS ARE IN PAIRS AND COLOR CODED. PRIMARY JETS ARE BRASS COLOR AND SECONDARY JETS ARE SILVER COLOR. (RECORD SIZES BELOW.) DISASSEMBLY OF SECONDARY VACUUM UNIT NOT NECESSARY UNLESS DIAPHRAGM NEEDS TO BE REPLACED.

#### NOMENCLATURE

REF. NO.	REF. NO.
1. SPRING - HOT START ASSIST LEVER	41. SEC. DIAPHRAGM ASSY.
2. SPRING - THROTTLE RETURN	42. GASKET - SEC. DIAPHRAGM ASSY.
3. COTTER PIN - THROTTLE SUB-RETURN SPRING ROD	43. SCREW & LKWSHR. (4) - BOWL TO THROTTLE BODY
4. WASHER (2) - SUB-RETURN SPRING ROD	44. BOWL ASSY. - FUEL
5. SCREW & LKWSHR. - CHOKE HEATER LEAD CLAMP	45. SCREW (4) - WINDOW RETAINER
6. SCREW & LKWSHR. (2) - CHOKE RETURN BRACKET	46. RETAINER (2) - WINDOW
7. SCREW & LKWSHR. (3) - CHOKE & BRACKET ASSY.	47. GASKET (2) - WINDOW
8. CHOKE & BRACKET ASSY.	48. WINDOW (2) - FUEL BOWL
9. E-CLIP - CHOKE LEVER	49. SEAL (2) - WINDOW
10. WASHER - CHOKE LEVER	50. PLUG (2) - PRI. MAIN JET
11. LEVER - CHOKE	51. GASKET (2) - PRI. PLUG
12. CHOKE RETURN & BRACKET ASSY.	52. JET (2) - PRI. MAIN
13. COTTER PIN - FAST IDLE ROD	53. GASKET (2) - PRI. MAIN JET
14. WASHER (2) - FAST IDLE ROD	54. PLUG (2) - SEC. MAIN JET
15. SCREW & LKWSHR. (3) - BOWL VENT SOLENOID	55. GASKET (2) - SEC. PLUG
16. SOLENOID ASSY. - BOWL VENT	56. JET (2) - SEC. MAIN
17. SPRING - SOLENOID	57. GASKET (2) - SEC. MAIN JET
18. VALVE SEAT	58. PLUG - INLET CHECK BALL
19. PLUNGER - VALVE	59. WEIGHT - INLET CHECK BALL
20. GASKET - SOLENOID ASSY.	60. BALL - PUMP INLET CHECK
21. BOLT (2) - FUEL INLET	61. SCREW - PUMP NOZZLE
22. GASKET (2) - BOLT	62. GASKET - SCREW
23. SCREEN (2) - FUEL INLET	63. NOZZLE - PUMP
24. GASKET (2) - INLET FITTING	64. GASKET - PUMP NOZZLE
25. SCREW & LKWSHR. (2) - BOWL COVER (LONG)	65. WEIGHT - DISC BALL
26. SCREW & LKWSHR. (3) - BOWL COVER	66. BALL - PUMP DISC
27. BOWL COVER ASSY.	67. POWER VALVE ASSY. (2)
28. PIN (2) - FLOAT	68. GASKET - POWER VALVE (2)
29. FLOAT & LEVER ASSY. (2)	69. JET (2) - SLOW AIR BLEED P/S
30. GASKET - BOWL COVER	70. JET (2) - SLOW P/S
31. NEEDLE, SEAT AND GASKET ASSY. (2)	71. JET (2) - MAIN AIR BLEED P/S
32. E-CLIP RETAINER - PUMP LEVER PIN	72. JET (2) - MAIN AIR BLEED S/S
33. PIN - PUMP LEVER	73. JET (2) - STEP S/S
34. SHIM (2) - PUMP LEVER	74. JET (2) - STEP AIR BLEED S/S
35. SCREW & LKWSHR. (4) - PUMP COVER	74. JET (2) - STEP AIR BLEED S/S
36. COVER - PUMP DIAPHRAGM	75. GASKET - THROTTLE BODY
37. DIAPHRAGM - PUMP	76. NEEDLE - IDLE BY PASS
38. SPRING - DIAPHRAGM	77. SPRING - IDLE BYPASS NEEDLE
39. COTTER PIN - SEC. THROTTLE LINK	78. SCREW & LKWSHR. - CAP
40. SCREW & LKWSHR. (3) - SEC. THROTTLE DIAPHRAGM ASSY.	79. CAP - MIXTURE NEEDLE (CALIF.)
	80. NEEDLE - IDLE MIXTURE
	81. SPRING - IDLE MIXTURE NEEDLE
	82. POWER VALVE SOLENOID
	83. GASKET - POWER VALVE SOLENOID
	84. THROTTLE BODY ASSY.

P/S = PRIMARY SIDE  
S/S = SECONDARY SIDE

#### CLEANING

CLEANING MUST BE DONE WITH CARBURETOR DISASSEMBLED. SOAK PARTS LONG ENOUGH TO SOFTEN AND REMOVE ALL FOREIGN MATERIAL. USE A CARBURETOR CLEANING SOLVENT. MAKE CERTAIN THE THROTTLE BODY IS FREE OF ALL CARBON DEPOSITS. WASH OFF IN SUITABLE SOLVENT. BLOW OUT ALL PASSAGES IN CASTINGS WITH COMPRESSED AIR AND CHECK CAREFULLY TO INSURE THOROUGH CLEANING OF OBSCURE AREAS. CAUTION: DO NOT SOAK DIAPHRAGM UNITS, SOLENOID, FLOATS, ELECTRIC CHOKE OR PARTS CONTAINING RUBBER IN CLEANING SOLVENTS.

#### REASSEMBLY

REASSEMBLE IN REVERSE ORDER OF DISASSEMBLY. NOTE SPECIAL INSTRUCTIONS AND ADJUSTMENTS.

#### SPECIAL INSTRUCTIONS

IDLE MIXTURE NEEDLE (80) - TURN IN UNTIL LIGHTLY SEATED, THEN BACK OUT 2 TURNS.

IDLE SPEED ADJ. NEEDLE (76) - TURN IN UNTIL LIGHTLY SEATED, THEN BACK OUT 4 TURNS.

CHOKE & BRACKET ASSY. (8) - WHEN INSTALLING BE SURE LEVER ON CHOKE SHAFT IS PROPERLY INSERTED IN HOOK ON CHOKE COIL SPRING.

FAST IDLE ADJUSTMENT - CHOKE VALVE HELD IN CLOSED POSITION. MEASURE CLEARANCE BETWEEN LOWER EDGE OF PRIMARY THROTTLE VALVE & BORE OF CARBURETOR. TO ADJUST BEND FAST IDLE ROD.

U.S.A. 1.30 - 1.50MM .051" - .059"  
CANADA .90 - 1.10MM .035" - .040"

ADJUST THE IDLE SPEED AND IDLE MIXTURE AS INSTRUCTED IN CAR WORKSHOP MANUAL.

# ADJUSTMENTS

