

© 1985 TECHLIT CO. Printed in U.S.A.

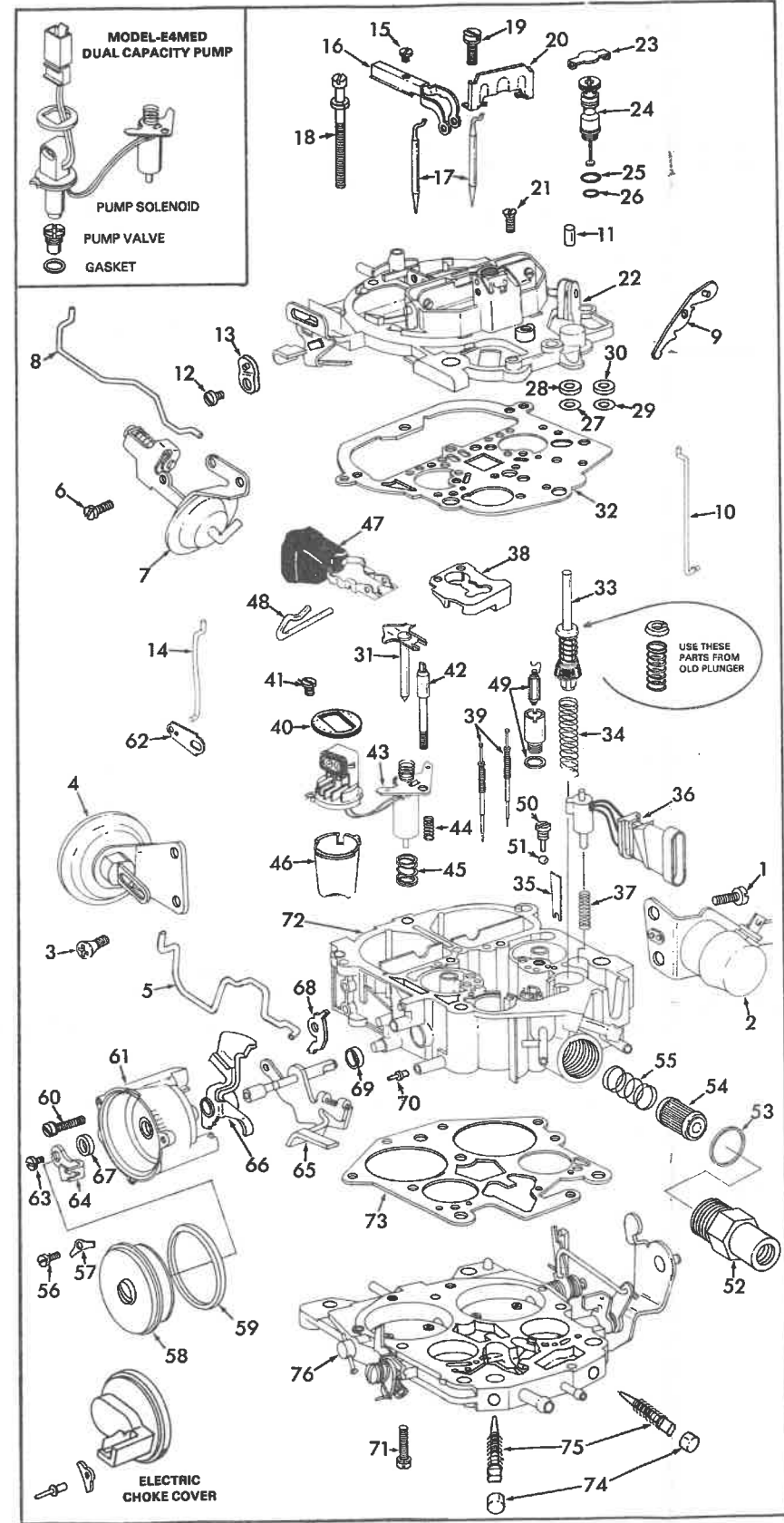
INSTRUCTION SHEET

OFF VEHICLE CARBURETOR SERVICE

ROCHESTER MODEL—E4MC, E4ME

50-589-3

GENERAL EXPLODED VIEW
THE GENERAL DESIGN AND PARTS SHOWN WILL VARY TO INDIVIDUAL UNITS COVERED ON THIS INSTRUCTION SHEET.



DISASSEMBLY

USE EXPLODED VIEW AS A GUIDE. THE NUMERICAL SEQUENCE MAY GENERALLY BE FOLLOWED TO DISASSEMBLE UNIT FAR ENOUGH TO PERMIT CLEANING AND INSPECTION. NOTE: TO REMOVE LEVER (9) JUST DRIVE PIN IN FAR ENOUGH TO RELEASE LEVER. BOWL COVER SCREWS (21) ARE INSIDE THE AIR HORN. DO NOT REMOVE BRASS TUBES FROM BOWL COVER. COVER (23) HELD IN BY RIVETS. DRILL OUT RIVET HEADS. DISCARD COVER (NOT REPLACED) BEFORE REMOVING IDLE AIR BLEED VALVE (24) TURN IN COUNTING THE NUMBER OF TURNS IT TAKES TO SEAT VALVE. RECORD FOR PROPER REASSEMBLY. MAIN JETS CAN BE REMOVED WITH PROPER WRENCH. CHOKE COVER HELD ON BY POP RIVETS SEE FIG. 1 FOR REMOVAL PROCEDURE. IDLE NEEDLE PLUG (74) REMOVAL SEE FIG. 2. BEFORE REMOVING IDLE ADJUSTING NEEDLES (75), TURN IN COUNTING THE NUMBER OF TURNS IT TAKES TO SEAT NEEDLE. RECORD FOR REASSEMBLY.

NOMENCLATURE

REF. NO.	REF. NO.
1. SCREW (2) - SOLENOID	40. GASKET - ECM CONNECTOR TO BOWL COVER
2. SOLENOID - IDLE SPEED	41. SCREW - ECM CONNECTOR
3. SCREW (2) - REAR VAC. BREAK	42. SCREW - LEAN MIXTURE (SOL. ADJ.)
4. REAR VAC. BREAK	43. SOLENOID & ECM CONNECTOR ASSY.
5. CONNECTING ROD - REAR VAC. BREAK	44. SPRING - LEAN MIXTURE SCREW
6. SCREW (2) - FRONT VAC. BREAK	45. SPRING - SOLENOID
7. FRONT VAC. BREAK & HOSE ASSY.	46. INSERT - WELL
8. CONNECTING ROD - FRONT VAC. BREAK	47. FLOAT & LEVER ASSY.
9. LEVER - PUMP	48. HINGE PIN - FLOAT
10. ROD - PUMP	49. NEEDLE & SEAT ASSY.
11. PLUNGER - ACTUATOR	50. PLUG - PUMP DISC. BALL
12. SCREW - CHOKE LEVER	51. BALL - PUMP DISC.
13. LEVER - CHOKE SHAFT	52. FILTER NUT - FUEL INLET
14. ROD - CHOKE	53. GASKET - FILTER NUT
15. SCREW - SEC. METERING ROD HOLDER	54. FILTER - FUEL
16. HOLDER - SEC. METERING RODS	55. SPRING - FILTER
17. METERING ROD (2) - SECONDARY	56. RETAINER (3) - RETAINER (REPLACE WITH SCREWS)
18. SCREW & LKWSHR. (2) - BOWL COVER (LONG)	57. RETAINER (3) - CHOKE COVER
19. SCREW & LKWSHR. (9) - BOWL COVER (TAPERED HEAD)	58. CHOKE COVER ASSY.
20. BAFFLE - AIR	59. GASKET - CHOKE COVER (NOT USED ON ELECTRIC CHOKE)
21. SCREW (2) - BOWL COVER	60. SCREW & WASHER - CHOKE HOUSING
22. BOWL COVER ASSY.	61. CHOKE HOUSING ASSY.
23. COVER - AIR BLEED VALVE (NOT USED OVER)	62. LEVER - INTERMEDIATE CHOKE
24. VALVE - IDLE AIR BLEED	63. SCREW - STAT COIL LEVER
25. O-RING - UPPER VALVE	64. LEVER - STAT COIL
26. O-RING - LOWER VALVE	65. SHAFT ASSY. - INTERMEDIATE CHOKE
27. RETAINER - PUMP STEM SEAL	66. CAM - FAST IDLE
28. SEAL - PUMP STEM	67. SEAL - CHOKE HOUSING (SOME MODELS)
29. RETAINER - TPS PLUNGER SEAL	68. CAM - SECONDARY LOCKOUT
30. SEAL - TPS PLUNGER	69. SEAL - INTERMEDIATE CHOKE SHAFT
31. PLUNGER - SOLENOID	70. TUBE - VACUUM PASSAGE (SOME MODELS)
32. GASKET - BOWL COVER	71. SCREW & LKWSHR. (3) - THROTTLE BODY
33. PUMP PLUNGER ASSY.	72. FLOAT BOWL ASSY.
34. SPRING - PUMP	73. GASKET - THROTTLE BODY
35. BAFFLE - PUMP WELL	74. PLUG (2) - IDLE NEEDLE (NOT REPLACED)
36. THROTTLE POSITION SENSOR ASSY.	75. NEEDLE & SPRING ASSY. (2) - IDLE ADJ.
37. SPRING - TPS	76. THROTTLE BODY ASSY.
38. INSERT - FLOAT BOWL	
39. MAIN METERING ROD & SPRING ASSY. (2)	

CLEANING

CLEANING MUST BE DONE WITH CARBURETOR DISASSEMBLED. SOAK PARTS LONG ENOUGH TO SOFTEN AND REMOVE ALL FOREIGN MATERIAL. USE A CARBURETOR CLEANING SOLVENT. MAKE CERTAIN THE THROTTLE BORES ARE FREE OF ALL CARBON DEPOSITS. RINSE OFF IN SUITABLE SOLVENT. BLOW OUT ALL PASSAGES IN CASTINGS WITH COMPRESSED AIR AND CHECK CAREFULLY TO INSURE THOROUGH CLEANING OF OBSCURE AREAS. CAUTION: DO NOT SOAK DIAPHRAGM UNITS, SOLENOIDS, FLOAT, ELECTRIC CHOKE OR PARTS CONTAINING RUBBER OR PLASTIC IN CLEANING SOLVENTS.

REASSEMBLY

REASSEMBLE IN REVERSE ORDER OF DISASSEMBLY. NOTE SPECIAL INSTRUCTIONS AND FOLLOW NUMERICAL OUTLINE IN MAKING ADJUSTMENTS.

SPECIAL INSTRUCTIONS

IDLE ADJUSTING NEEDLES (75) - TURN EACH NEEDLE IN UNTIL LIGHTLY SEATED, THEN BACK OUT NUMBER OF TURNS RECORDED ON DISASSEMBLY. (BASIC SETTING 4 1/2 TURNS OUT).

SEALS INTERMEDIATE CHOKE SHAFT (69), (87) - SEAL (89) INSTALL WITH LIP FACING OUT. SEAL (67) INSTALL WITH LIP FACING IN.

ELECTRIC CHOKE MODELS DO NOT USE A CHOKE COVER GASKET (59).

FUEL FILTER (54) - BE SURE TO USE FILTER WITH BUILT IN ROLL OVER CHECK VALVE AND WITH CHECK VALVE FACING OUT. TIGHTEN FILTER NUT TO 18 FT. LBS.

FLOAT INSTALLATION - INSTALL FLOAT BY SLIDING FLOAT LEVER UNDER PULL CLIP FROM FRONT TO BACK. INSTALL FLOAT PIN (DO NOT INSTALL PULL CLIP IN HOLES OF FLOAT ARM).

LEAN MIXTURE SCREW (42) - (SOLENOID ADJ.) - TURN MIXTURE CONTROL SCREW IN FLOAT BOWL CLOCKWISE UNTIL LIGHTLY BOTTOMED. THEN BACK OUT 3 1/2 TURNS

IDLE AIR BLEED VALVE (24) - TURN VALVE IN UNTIL LIGHTLY BOTTOMED. THEN BACK OUT NUMBER OF TURNS RECORDED ON DISASSEMBLY. (IF NOT KNOWN BACK OUT 4 TURNS.)

SEALS (30) (28) - INSTALL WITH LIP OF SEAL FACING UPWARD. LIGHTLY STAKE SEAL RETAINER IN THREE PLACES.

THE COMPUTER COMMAND CONTROL (CCC) FORMERLY (C4) SYSTEM IS A SOPHISTICATED SYSTEM. THE PROCEDURE FOR SETTING THE IDLE AIR BLEED VALVE AND MIXTURE CONTROL SYSTEM MUST BE FOLLOWED EXACTLY. USE THE ENGINE DECAL AND CARB. SERVICE MANUAL PROCEDURE.

ADJUSTMENT DATA TABLE

YEAR	APPLICATION	FLOAT LEVEL	FAST IDLE CAM (CHOKE ROD)	VACUUM BREAK FRONT	VACUUM BREAK REAR	AIR VALVE SPRING (TURNS)	UNLOADER SETTING
1980	BUICK V6 231" ENG. CARB. NO. 17080540, 0543	3/8"	14.5°	19°	23°	9/16	38°
	BUICK V6 305" ENG. CARB. NO. 17080542	3/8"	14.5°	19°	13°	9/16	38°
	BUICK V6 350" ENG. CARB. NO. 17080545	3/8"	14.5°	19°	18°	9/16	38°
	BUICK V8 305" ENG. CARB. NO. 17080502, 504, 516, 517	1/2"	20°	24°	30°	7/8	38°
1981	BUICK V6 252" ENG. CARB. NO. 17080553, 554	15/32"	17°	25°	35°	1/2	35°
	BUICK V6 231" ENG. CARB. NO. 17081242	5/16"	24.5°	17°	15°	9/16	38°
	BUICK V6 252" ENG. CARB. NO. 17081243	1/4"	24.5°	19°	17°	9/16	38°
	BUICK V8 307" ENG. CARB. NO. 17081245, 1247, 1248, 1249	3/8"	24.5°	28°	24°	5/8	38°
1982	BUICK V8 307" ENG. CARB. NO. 17081289	13/32"	24.5°	28°	24°	5/8	38°
	BUICK V6 231" ENG. CARB. NO. 17081253, 1254	15/32"	14°	25°	36°	1/2	35°
	BUICK V6 252" ENG. CARB. NO. 17082244	9/32"	24.5°	21°	16°	9/16	32°
	BUICK V6 252" ENG. CARB. NO. 17082249	9/32"	24.5°	20°	15°	9/16	38°
1980	CADILLAC V6 252" ENG. CARB. NO. 17082245, 2246	3/8"	24.5°	26°	26°	5/8	32°
	CADILLAC V6 252" ENG. CARB. NO. 17082247, 2248	3/8"	18°	26°	26°	5/8	32°
	CADILLAC V6 252" ENG. CARB. NO. 17082247	7/16"	14°	27°	41°	1/2	35°
	CADILLAC V8 368" ENG. CARB. NO. 17080530*	17/32"	16°	25°	47°	1/2	40°
1981	CADILLAC V6 252" ENG. CARB. NO. 17081248	3/8"	24.5°	28°	24°	5/8	38°
	CADILLAC V6 252" ENG. CARB. NO. 17081289	13/32"	24.5°	28°	24°	5/8	38°
	CADILLAC V6 252" ENG. CARB. NO. 17082246	3/8"	24.5°	26°	26°	5/8	32°
	CADILLAC V6 252" ENG. CARB. NO. 17082247	3/8"	18°	26°	26°	5/8	32°
1982	CHEVROLET V6 231" ENG. CARB. NO. 17080543	3/8"	14.5°	19°	23°	9/16	38°
	CHEVROLET V8 305" ENG. CARB. NO. 17080502, 504	1/2"	20°	24°	30°	7/8	38°
	CHEVROLET V6 231" ENG. CARB. NO. 17081202, 1203, 1204, 1207	1/4"	24.5°	19°	17°	9/16	38°
	CHEVROLET V8 350" ENG. CARB. NO. 170801216, 1217, 1218	11/32"	20°	26°	---	7/8	38°
1980	OLDSMOBILE V8 305" ENG. CARB. NO. 17080504, 517	1/2"	20°	24°	30°	7/8	38°
	OLDSMOBILE V8 350" ENG. CARB. NO. 17080553, 554	15/32"	17°	25°	35°	1/2	35°
	OLDSMOBILE V6 252" ENG. CARB. NO. 17081248	3/8"	24.5°	28°	24°	5/8	38°
	OLDSMOBILE V8 307" ENG. CARB. NO. 17081289	13/32"	24.5°	28°	24°	5/8	38°
1981	OLDSMOBILE V8 307" ENG. CARB. NO. 17081253, 1254	15/32"	14°	25°	36°	1/2	35°
	OLDSMOBILE V6 252" ENG. CARB. NO. 17082246	3/8"	24.5°	26°	26°	5/8	32°
	OLDSMOBILE V6 252" ENG. CARB. NO. 17082247	3/8"	18°	26°	26°	5/8	32°
	OLDSMOBILE V8 307" ENG. CARB. NO. 17082247	7/16"	14°	27°	41°	1/2	35°
1982	PONTIAC V6 252" ENG. CARB. NO. 17080504, 517	1/2"	20°	24°	30°	7/8	38°
	PONTIAC V8 305" ENG. CARB. NO. 17080553	15/32"	17°	25°	35°	1/2	35°
	PONTIAC V8 301" ENG. CARB. NO. 17081270	7/16"	14.5°	24°	34°	5/8	35°
	PONTIAC V8 301" ENG. CARB. NO. 17081272	7/16"	14.5°	24°	40°	5/8	35°
1981	PONTIAC V8 305" ENG. CARB. NO. 17081273, 1274	7/16"	16°	24°	34°	5/8	35°
	PONTIAC V8 305" ENG. CARB. NO. 17081203, 1207	11/32"	20°	26°	---	7/8	38°
	PONTIAC V8 307" ENG. CARB. NO. 17081254	15/32"	14°	25°	36°	1/2	35°
	PONTIAC V6 252" ENG. CARB. NO. 17082202, 2204	11/32"	20°	27°	---	7/8	38°
1982	PONTIAC V8 305" ENG. CARB. NO. 17082203, 2207	11/32"	38°	27°	---	7/8	38°

*PUMP ROD LOCATION INNER HOLE OF PUMP LEVER

ADJUSTMENTS

