

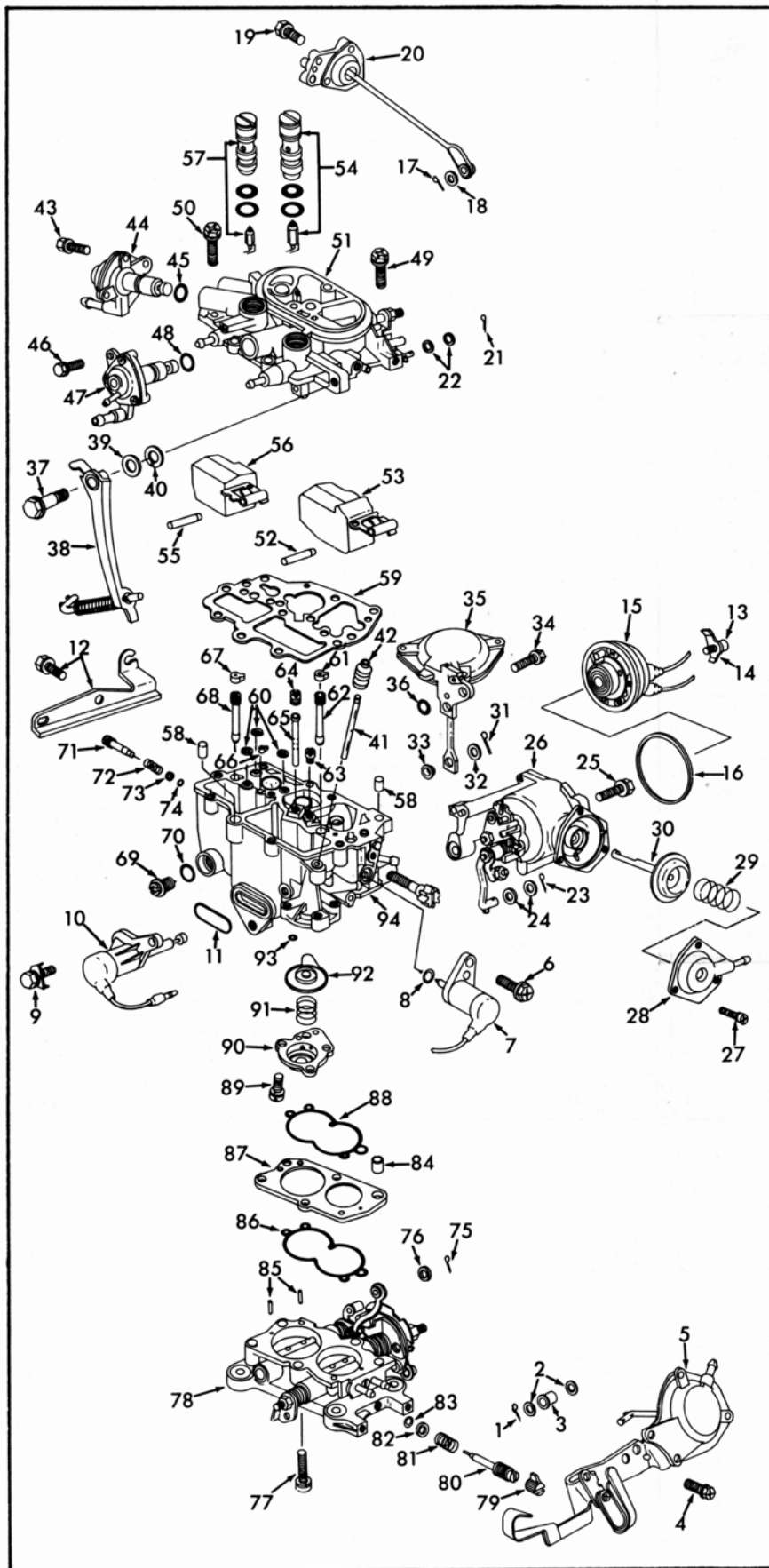
INSTRUCTION SHEET

KEIHIN CARBURETOR

HONDA ACCORD/PRELUDE (CVCC ENGINE) 1979

GENERAL EXPLODED VIEW

THE GENERAL DESIGN AND PARTS SHOWN WILL VARY TO
INDIVIDUAL UNITS COVERED ON THIS INSTRUCTION SHEET.



DISASSEMBLY

USE EXPLODED VIEW AS A GUIDE. THE NUMERICAL SEQUENCE MAY GENERALLY BE FOLLOWED TO DISASSEMBLE UNIT FAR ENOUGH TO PERMIT CLEANING AND INSPECTION NOTE: TO REMOVE FLOAT PINS (52), (55), CAREFULLY SUPPORT SHORT BOSS (FLOAT PIN SUPPORT), USING 1/16" PIN PUNCH & HAMMER, TAP PIN TOWARDS SHORT BOSS. INSIDE END HAS A TAPER WHICH FITS SNUG IN LONG BOSS. RECORD SIZES OF JETS AND TUBES (BELOW) FOR PROPER REASSEMBLY. AUXILIARY IDLE MIXTURE NEEDLE (71) BEFORE REMOVING, TURN IN COUNTING THE NUMBER OF TURNS IT IS FROM THE SEATED POSITION. IDLE LIMITER CAP (79) CAN BE CAREFULLY PULLED OFF IDLE ADJUSTING NEEDLE (WILL BE USED OVER).

NOMENCLATURE

REF. NO.	REF. NO.
1. COTTER PIN - T.C. ROD	47. AIR VENT SHUT-OFF ASSY. (B)
2. WASHER (2) - T.C. ROD	48. O-RING - AIR VENT SHUT-OFF
3. BUSHING - T.C. ROD	49. SCREW LOCKWASHER & FLAT WASHER (2) - BOWL COVER (LOCATOR PIN HOLES).
4. SCREW & LOCKWASHER (2) - BRACKET T.C.	50. SCREW & LOCKWASHER (8) - BOWL COVER
5. THROTTLE CONTROLLER DIAPH. ASSY.	51. BOWL COVER ASSY.
6. SCREW & LOCKWASHER - SOLENOID	52. PIN - MAIN FLOAT
7. SOLENOID - IDLE CUT-OFF	53. FLOAT - MAIN
8. O-RING - SOLENOID MOUNTING	54. NEEDLE & SEAT ASSY. - MAIN
9. SCREW & LOCKWASHER (2) - SOLENOID	55. PIN - AUXILIARY FLOAT
10. SOLENOID - PRIMARY MAIN JET CUT-OFF	56. FLOAT - AUXILIARY
11. O-RING - SOLENOID MOUNTING	57. NEEDLE & SEAT ASSY. - AUXILIARY
12. SCREW (2) AND BRACKET	58. PIN (2) - LOCATOR
13. SCREW & LOCKWASHER (3) - RETAINER	59. GASKET - BOWL COVER
14. RETAINER (3) - CHOKE COVER	60. O-RINGS (3) - AUX. PASSAGE SEALS
15. CHOKE COVER ASSY.	61. CAP (BLACK) - PRIMARY SLOW JET
16. GASKET - CHOKE COVER	62. JET - PRIMARY SLOW
17. COTTER PIN - ROD	63. JET - PRIMARY MAIN AIR BLEED
18. WASHER - ROD	64. JET - SEC. MAIN AIR BLEED
19. SCREW & LOCKWASHER (2) - CHOKE OPENER	65. TUBE - SECONDARY EMULSION
20. CHOKE OPENER DIAPH. ASSY.	66. CAP (SMALL WHITE) - PASSAGE
21. COTTER PIN - CHOKE ROD	67. CAP (WHITE) - AUXILIARY SLOW JET
22. WASHER (2) - CHOKE ROD	68. JET - AUXILIARY SLOW
23. COTTER PIN - FAST IDLE ROD (LOWER END)	69. PLUG - AUXILIARY FUEL BOWL
24. WASHER (2) - FAST IDLE ROD	70. O-RING - PLUG
25. SCREW & LOCKWASHER (2) - CHOKE HOUSING	71. NEEDLE - AUXILIARY IDLE
26. CHOKE HOUSING ASSY.	72. SPRING - AUX. IDLE NEEDLE
27. SCREW & LOCKWASHER (3) - COVER	73. WASHER - AUX. IDLE NEEDLE
28. COVER - DIAPHRAGM	74. O-RING - AUX. IDLE NEEDLE
29. SPRING - DIAPHRAGM	75. COTTER PIN - AUX. THROTTLE LINK
30. DIAPH. ASSY. - FAST IDLE UNLOADER	76. WASHER - AUX. THROTTLE LINK
31. COTTER PIN - SEC. DIAPH. ROD	77. SCREW & LOCKWASHER (5) - THROTTLE BODY
32. WASHER - SEC. DIAPH. ROD	78. THROTTLE BODY ASSY.
33. BUSHING - SEC. DIAPH. ROD	79. CAP - IDLE LIMITER
34. SCREW & LOCKWASHER (2) - SEC. DIAPH. ASSY.	80. NEEDLE - PRIMARY IDLE ADJ.
35. SECONDARY DIAPHRAGM ASSY.	81. SPRING - IDLE ADJ. NEEDLE
36. O-RING - SEC. DIAPHRAGM PASSAGE	82. WASHER - IDLE NEEDLE
37. SCREW - PUMP LEVER	83. O-RING - IDLE NEEDLE
38. PUMP LEVER & ROD ASSY.	84. PIN - LOCATOR (LARGE)
39. WASHER - LEVER SCREW	85. PIN (2) - LOCATOR (SMALL)
40. LOCKWASHER - LEVER SCREW	86. O-RING - SPACER
41. ROD - PUMP	87. SPACER - THROTTLE BODY
42. BOOT - PUMP ROD	88. O-RING - SPACER
43. SCREW & LOCKWASHER - AIR VENT SHUT-OFF	89. SCREW & LOCKWASHER (3) - COVER
44. AIR VENT SHUT-OFF ASSY. (A)	90. COVER - PUMP DIAPHRAGM
45. O-RING - AIR VENT SHUT-OFF	91. SPRING - DIAPHRAGM RETURN
46. SCREW & LOCKWASHER - AIR VENT SHUT-OFF	92. DIAPHRAGM - PUMP
	93. O-RING - PUMP PASSAGE
	94. BOWL ASSEMBLY

CLEANING

CLEANING MUST BE DONE WITH CARBURETOR DISASSEMBLED. SOAK PARTS LONG ENOUGH TO SOFTEN AND REMOVE ALL FOREIGN MATERIAL. DO NOT SOAK ANY ASSEMBLIES FOR A PROLONGED PERIOD OF TIME WITH PLASTIC PARTS THAT ARE NOT REMOVED. USE A CARBURETOR CLEANING SOLVENT. MAKE CERTAIN THE THROTTLE BODY IS FREE OF ALL CARBON DEPOSITS. WASH OFF IN SUITABLE SOLVENT. BLOW OUT ALL PASSAGES AND JETS IN CASTINGS WITH COMPRESSED AIR AND CHECK CAREFULLY TO INSURE THOROUGH CLEANING OF OBSCURE AREAS. CAUTION: DO NOT SOAK DIAPHRAGM OR SOLENOID ASSEMBLIES (5), (7), (10), (20), (30), (35), (44), (47), CHOKE COVER (15), FLOATS (53), (56), OR PARTS MADE OF RUBBER IN ANY TYPE OF CLEANING SOLVENTS.

REASSEMBLY

REASSEMBLE IN REVERSE ORDER OF DISASSEMBLY. NOTE SPECIAL INSTRUCTIONS AND ADJUSTMENTS.

SPECIAL INSTRUCTIONS

IDLE ADJUSTING NEEDLE (80) - TO INSTALL, FIRST ASSEMBLE SPRING (81), WASHER (82), O-RING (83), ON NEEDLE. TURN NEEDLE IN UNTIL LIGHTLY SEATED. THEN BACK OUT 2 TURNS. (DO NOT INSTALL IDLE LIMITER CAP AT THIS TIME).

THROTTLE BODY ASSEMBLY (78) - WHEN INSTALLING IT TO BOWL ASSEMBLY BE SURE TO HOOK UP AUXILIARY THROTTLE LINK.

AUXILIARY IDLE ADJUSTING NEEDLE (71) - TO INSTALL FIRST ASSEMBLE SPRING (72), WASHER (73), O-RING (74), ON NEEDLE. TURN NEEDLE IN UNTIL LIGHTLY SEATED THEN BACK OUT NUMBER OF TURNS COUNTED ON DISASSEMBLY (IF ORIGINAL SCREW POSITION IS NOT KNOWN, TURN THE SCREW 1 3/4 TURNS OUT FROM THE SEATED POSITION).

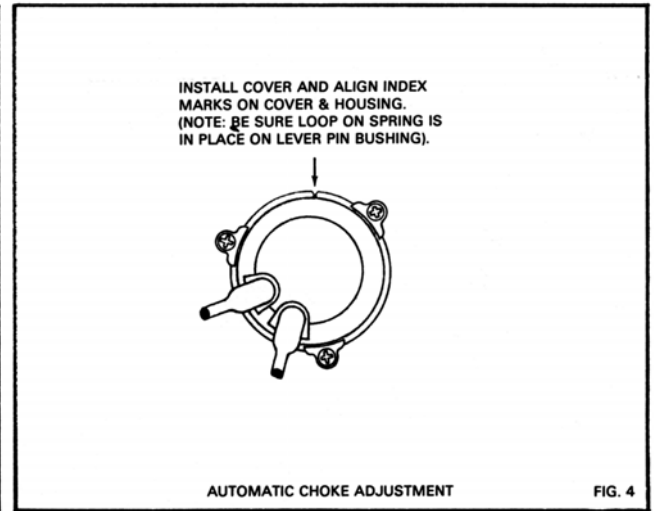
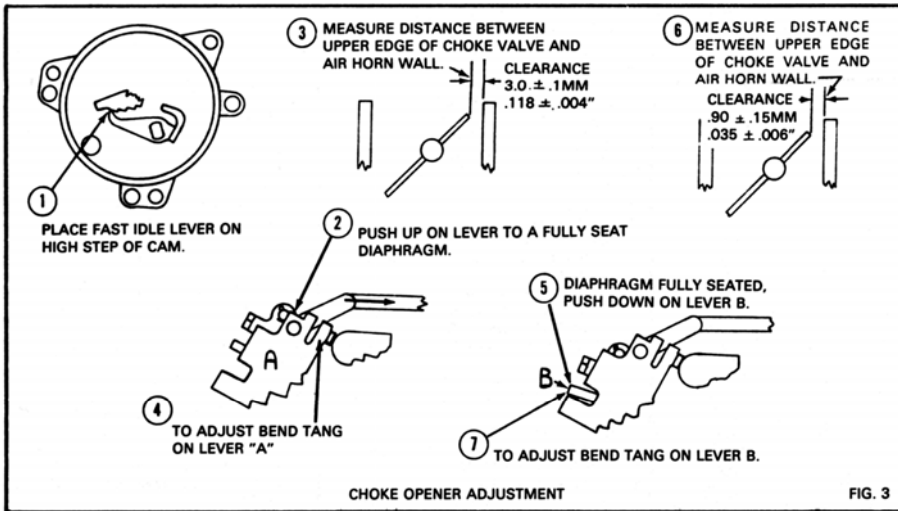
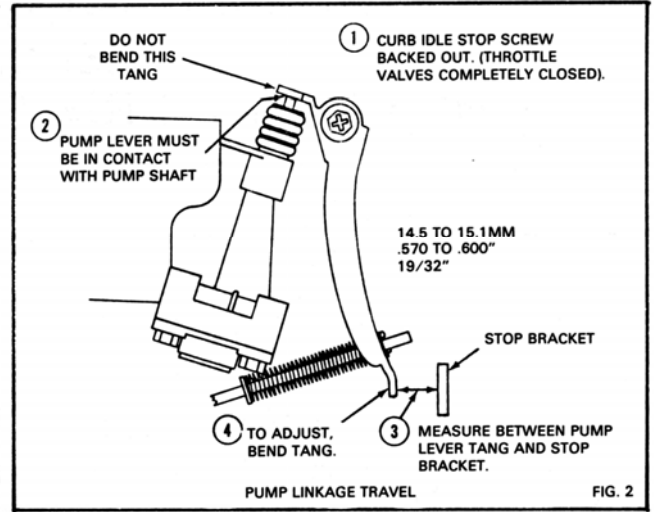
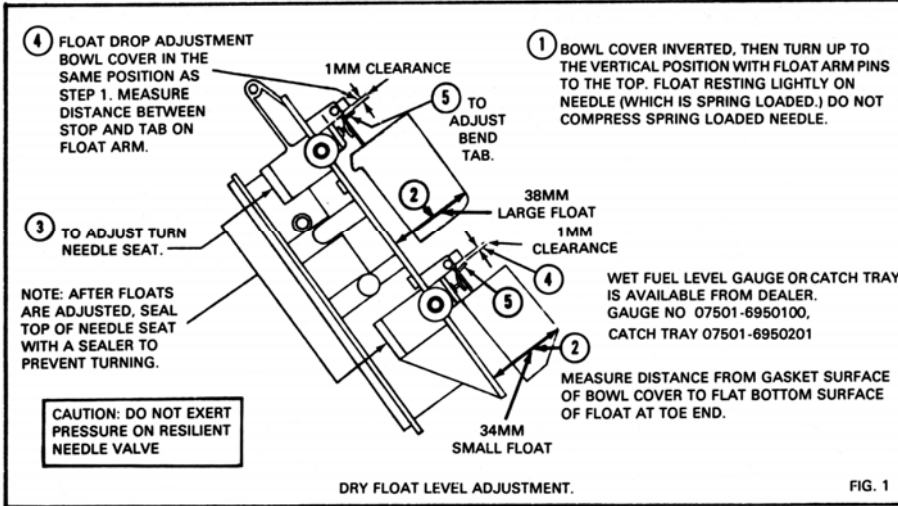
NEEDLE & SEAT ASSEMBLIES (54) (57) - AFTER FLOAT LEVELS HAVE BEEN ADJUSTED BE SURE TO SEAL SCREW HEADS OF NEEDLE SEAT WITH A SEALER TO PREVENT TURNING.

FLOAT PINS (52) (55) - INSTALL WITH TAPERED ENDS TOWARDS LONG BOSS (CENTER OF BOWL COVER).

BOWL COVER SCREWS (49) (50) - TIGHTEN SCREWS FROM THE CENTER OUT.

CHOKE COVER ASSY. (15) - WHEN INSTALLING BE SURE LOOP END OF SPRING IS PLACED ON PIN OF LEVER.

ADJUSTMENTS



- ENGINE AT NORMAL OPERATING TEMPERATURE (I.E. COOLING FAN TURNS ON).
- HEADLIGHTS ON, COOLING FAN OR HIGH SPEED HEATER FAN ON. (BUT NOT BOTH FANS.)
- TURN MIXTURE SCREW IN OR OUT TO OBTAIN THE HIGHEST R.P.M.
- ADJUST THROTTLE STOP SCREW TO OBTAIN THE PROPER R.P.M. (SEE CHART) RECHECK MIXTURE SCREW.
- TURN MIXTURE SCREW IN UNTIL IDLE SPEED DROPS TO 700 R.P.M. (MANUAL) OR 650 R.P.M. (HONDAMATIC IN GEAR)
- INSTALL IDLE LIMITER CAP WITH POINTER 180° AWAY FROM BOSS ON CARBURETOR BODY. (IF IDLE SPEED CANNOT BE ADJUSTED PROPERLY, CHECK FOR PROPER THROTTLE CABLE ADJUSTMENT).

TRANSMISSION	49 STATE	CALIF.	HIGH ALTITUDE
MANUAL	780	770	770 (880 AT SEA LEVEL)
HONDAMATIC (IN GEAR)	750	750	750 (810 AT SEA LEVEL)

IDLE SPEED/MIXTURE ADJUSTMENT (IDLE DROP METHOD) FIG. 5

