

INSTRUCTION SHEET

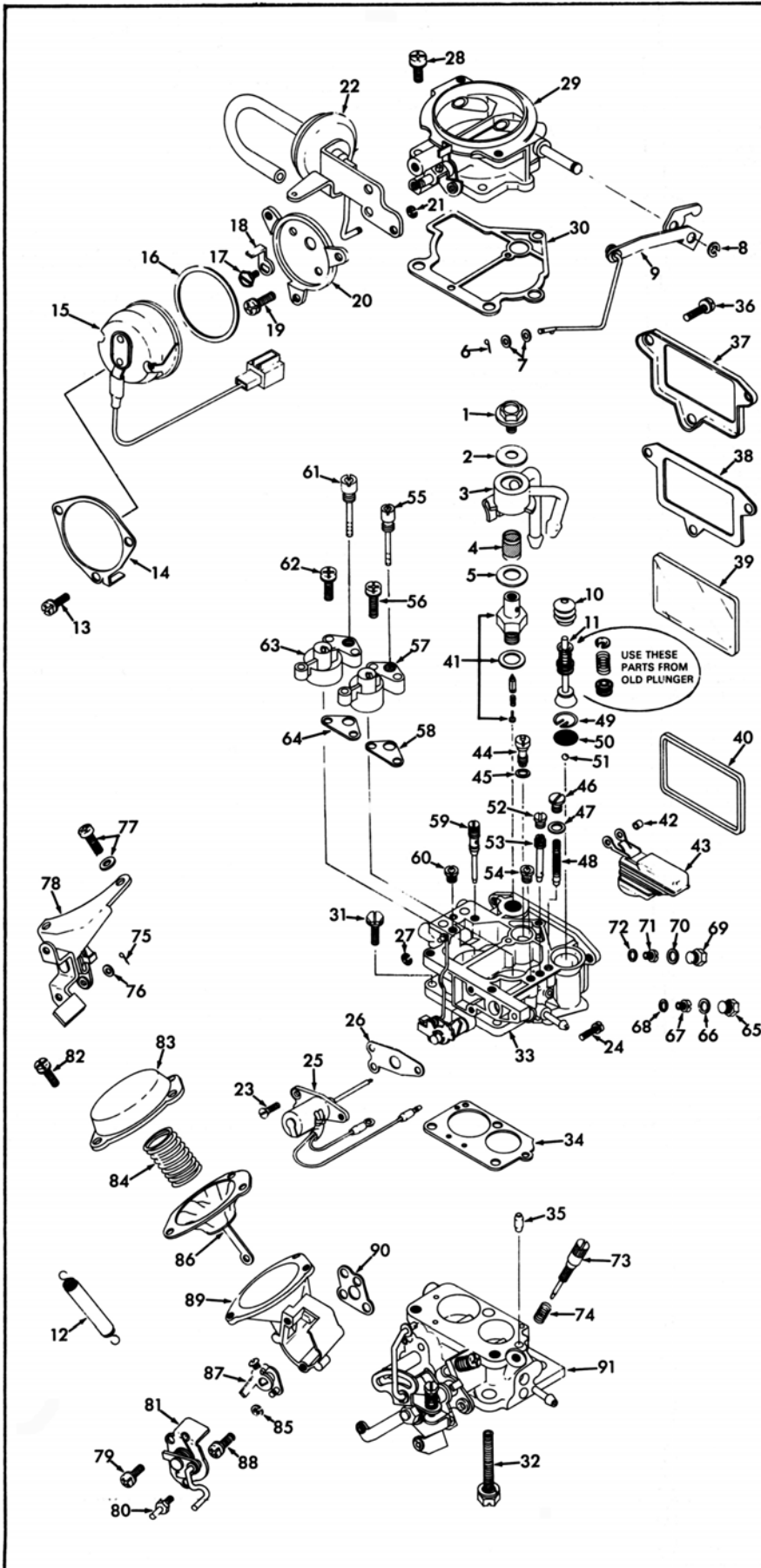
OFF VEHICLE CARBURETOR SERVICE

NIKKI-2 BARREL/2 STAGE

(COURIER/MAZDA PICKUP)

GENERAL EXPLODED VIEW

THE GENERAL DESIGN AND PARTS SHOWN WILL VARY TO INDIVIDUAL UNITS COVERED ON THIS INSTRUCTION SHEET.



DISASSEMBLY

USE EXPLODED VIEW AS A GUIDE. THE NUMERICAL SEQUENCE MAY GENERALLY BE FOLLOWED TO DISASSEMBLE UNIT FAR ENOUGH TO PERMIT CLEANING AND INSPECTION. NOTE: DO NOT REMOVE POWER PISTON FROM AIR HORN ASSY. (29). FLUSH AND BLOW OUT PASSAGE GOOD AFTER CLEANING. CAREFUL NOT TO BREAK PLASTIC PASSAGE BUSHING (35). RECORD SIZES OF JETS AND VENTURIS BELOW FOR PROPER REASSEMBLY. PRIMARY SIDE JETS ARE BRASS COLOR AND SECONDARY SIDE JETS ARE SILVER COLOR. SECONDARY DIAPHRAGM WILL BE USED OVER UNLESS IT NEED REPLACING. (DEALER ITEM)

NOTE: ON LATE MODELS TO GAIN ACCESS TO IDLE MIXTURE NEEDLE, SAW OFF 12MM (470") OF SHELL CONTAINING TOP SEAL PLUG.

NOMENCLATURE

REF. NO.	REF. NO.
1. BOLT - FUEL CONNECTOR	47. GASKET - PLUG
2. GASKET - BOLT	48. SPRING & CHECK BALL ASSY.
3. CONNECTOR - FUEL	49. RETAINER - INTAKE CHECK SCREEN
4. SCREEN - FUEL INLET	50. SCREEN - INTAKE CHECK
5. GASKET - FUEL CONNECTOR	51. BALL - PUMP INTAKE CHECK
6. COTTER PIN - PUMP ROD (LOWER END)	52. PLUG - PRI. SLOW JET
7. WASHER (2) - PUMP ROD	53. JET - PRI. SLOW
8. E-CLIP - PUMP LEVER	54. JET - PRI. SLOW AIR
9. PUMP LEVER & ROD ASSY.	55. JET - PRI. MAIN AIR BLEED
10. BOOT - PUMP	56. SCREW & WASHERS (2) - PRI. VENTURI
11. PUMP ASSY.	57. PRIMARY VENTURI ASSY.
12. SPRING & BOOT - THROTTLE RETURN	58. GASKET - PRI. VENTURI
13. SCREW & LOCKWASHER (3) - RETAINER	59. JET - SEC. SLOW
14. RETAINER - CHOKE COVER	60. JET - SEC. SLOW AIR
15. CHOKE COVER ASSY. - ELECTRIC	61. JET - SEC. MAIN AIR BLEED
16. GASKET - CHOKE COVER	62. SCREW & WASHERS (2) - SEC. VENTURI
17. SCREW - SPRING LEVER	63. SECONDARY VENTURI ASSY.
18. LEVER - CHOKE SPRING	64. GASKET - SEC. VENTURI
19. SCREW & LOCKWASHER (3) - CHOKE HOUSING	65. PLUG - PRI. MAIN JET
20. CHOKE HOUSING	66. GASKET - PLUG
21. ECLIP - CHOKE PULL OFF ROD	67. JET - PRIMARY MAIN
22. CHOKE PULL OFF ASSY.	68. GASKET - PRI. MAIN JET
23. SCREW (2) - SOLENOID	69. PLUG - SEC. MAIN JET
24. SCREW & LOCKWASHER - SOLENOID GRD. WIRE	70. GASKET - PLUG
25. SOLENOID ASSY. - ANTI DIESELING	71. JET - SECONDARY MAIN
26. GASKET - SOLENOID ASSY.	72. GASKET - SEC. MAIN JET
27. ECLIP - FAST IDLE ROD (TOP END)	73. NEEDLE - IDLE ADJUSTING
28. SCREW & LOCKWASHER (3) - AIR HORN	74. SPRING - IDLE ADJ. NEEDLE
29. AIR HORN ASSY.	75. COTTER PIN - THROTTLE LINK
30. GASKET - AIR HORN	76. WASHER - THROTTLE LINK
31. SCREW & LOCKWASHER (2) - THROTTLE BODY	77. SCREW & LOCKWASHER (2) - BRACKET ASSY.
32. SCREW & LOCKWASHER - THROTTLE BODY (VAC PASSAGE)	78. BRACKET & THROTTLE LEVER ASSY.
33. BOWL ASSY.	79. SCREW & LOCKWASHER - SEC. ARM ASSY.
34. GASKET - THROTTLE BODY	80. STUD - SEC. ARM ASSY.
35. TUBE - PASSAGE (PLASTIC)	81. SECONDARY ARM & SPRING ASSY.
36. SCREW (3) - WIDOW CLAMP	82. SCREW & LOCKWASHER - DIAPHRAGM COVER
37. CLAMP - WINDOW	83. COVER - DIAPHRAGM
38. GASKET - WINDOW CLAMP	84. SPRING - SEC. DIAPHRAGM
39. WINDOW - FUEL BOWL	85. RETAINER - DIAPHRAGM STEM
40. GASKET - WINDOW	86. DIAPHRAGM - SECONDARY
41. NEEDLE & SEAT ASSY.	87. SECONDARY THROTTLE LEVER
42. SLEEVE - FLOAT RETAINER	88. SCREW & LOCKWASHER (3) - DIAPHRAGM HOUSING
43. FLOAT ASSY.	89. HOUSING - DIAPHRAGM
44. POWER VALVE ASSY.	90. GASKET - DIAPHRAGM HOUSING
45. GASKET - POWER VALVE	91. THROTTLE BODY ASSY.
46. PLUG - PUMP DISC. CHECK	

CLEANING

CLEANING MUST BE DONE WITH CARBURETOR DISASSEMBLED. SOAK PARTS LONG ENOUGH TO SOFTEN AND REMOVE ALL FOREIGN MATERIAL. (DO NOT PROLONG SOAKING OF ASSY. WITH PLASTIC PARTS THAT ARE NOT REMOVABLE, THEY WILL WITHSTAND NORMAL CLEANING IN CARBURETOR CLEANER.) MAKE CERTAIN THE THROTTLE BODY IS FREE OF ALL CARBON DEPOSITS. WASH OFF IN A SUITABLE SOLVENT. BLOW OUT ALL PASSAGES IN CASTINGS WITH COMPRESSED AIR AND CHECK CAREFULLY TO INSURE THOROUGH CLEANING OF OBSCURE AREAS. CAUTION: DO NOT SOAK ELECTRIC CHOKE COVER (15), CHOKE PULL OFF (22), ANTI DIESELING SOLENOID (25), FLOAT (43), SECONDARY DIAPHRAGM (86), OR PARTS MADE OF RUBBER IN ANY TYPE OF CLEANING SOLVENT.

REASSEMBLY

REASSEMBLE IN REVERSE ORDER OF DISASSEMBLY. NOTE SPECIAL INSTRUCTIONS AND ADJUSTMENTS.

SPECIAL INSTRUCTIONS

IDLE ADJUSTING NEEDLE (73) - TURN NEEDLE IN UNTIL LIGHTLY SEATED, THEN BACK OUT 1½ TO 2 TURNS.

IDLE SPEED AND MIXTURE ADJUSTMENT, REFER TO VEHICLE EMISSION CONTROL INFORMATION LABEL IN ENGINE COMPARTMENT.

PUMP PLUNGER (11) - REMOVE PAPER SLEEVE FROM LEATHER CUP. FLEX LEATHER OUTWARD SLIGHTLY. SOAK CUP IN LIGHT OIL A FEW MINUTES PRIOR TO PLACING IN CARBURETOR.

WINDOW CLAMP SCREWS (36) - TIGHTEN SCREWS DOWN EVENLY. DON'T OVERTIGHTEN.

ADJUSTMENTS

