

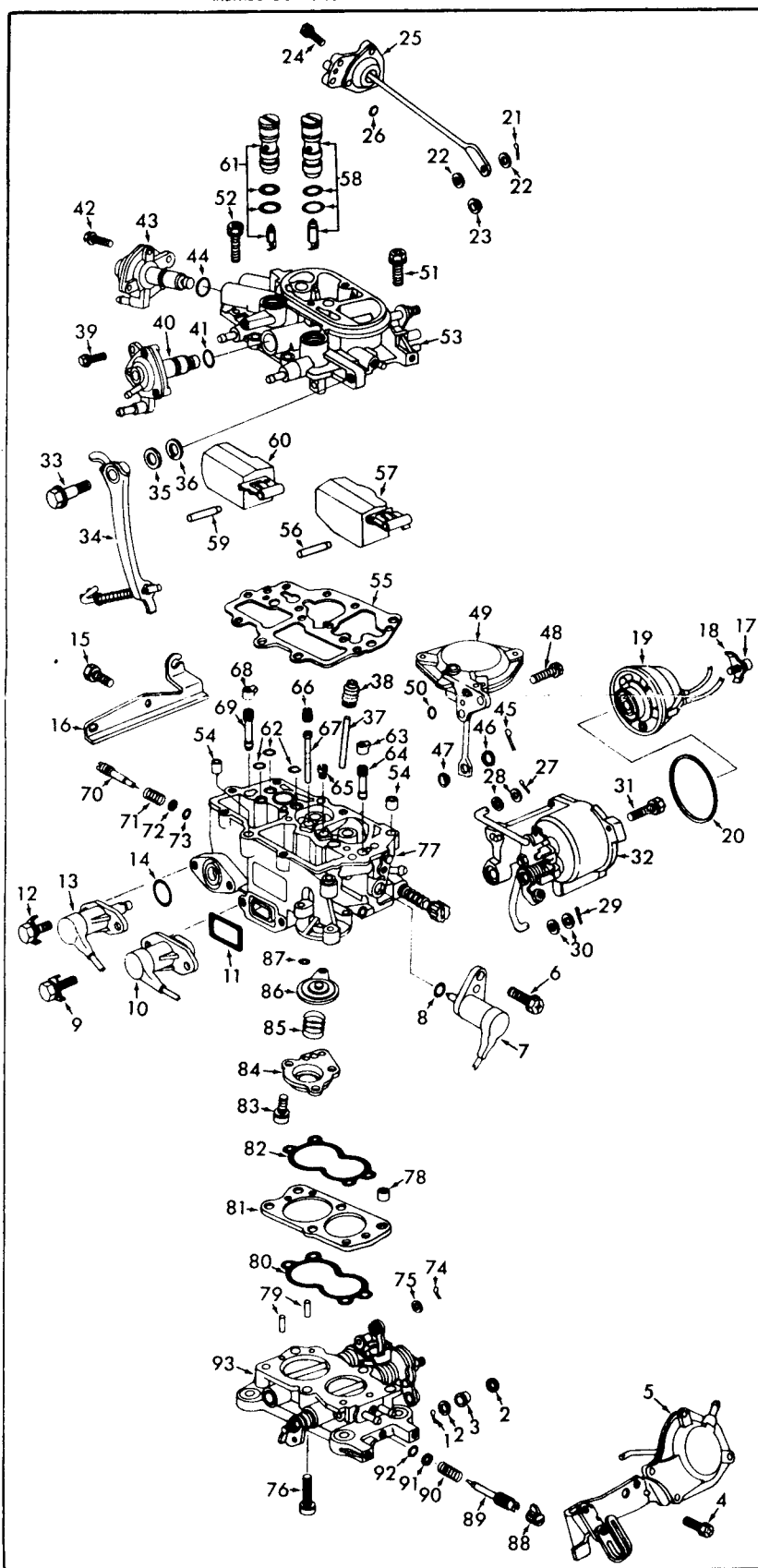
INSTRUCTION SHEET

KEIHIN CARBURETOR

HONDA/ACCORD (CVCC ENGINE) 1978-79

GENERAL EXPLODED VIEW

THE GENERAL DESIGN AND PARTS SHOWN WILL VARY TO
INDIVIDUAL UNITS COVERED ON THIS INSTRUCTION SHEET



DISASSEMBLY

USE EXPLODED VIEW AS A GUIDE. THE NUMERICAL SEQUENCE MAY GENERALLY BE FOLLOWED TO DISASSEMBLE UNIT FAR ENOUGH TO PERMIT CLEANING AND INSPECTION. **NOTE:** TO REMOVE FLOAT PINS (56), (59), CAREFULLY SUPPORT SHORT BOSS (FLOAT PIN SUPPORT) USING A 3/32" PIN PUNCH & HAMMER. TAP PIN TOWARDS SHORT BOSS. (INSIDE END HAS A TAPER WHICH FITS SNUG IN LONG BOSS). RECORD SIZES OF JETS AND TUBES (BELOW) FOR PROPER REASSEMBLY. **AUXILIARY IDLE MIXTURE NEEDLE (70)** BEFORE REMOVING, TURN IN COUNTING THE NUMBER OF TURNS IT IS FROM THE SEATED POSITION. **IDLE LIMITER CAP (88)** CAN BE CAREFULLY PULLED OFF IDLE ADJUSTING NEEDLE (WILL BE USED OVER).

NOMENCLATURE

REF. NO.	REF. NO.
1	46
2	47
3	48
4	49
5	50
6	51
7	52
8	53
9	54
10	55
11	56
12	57
13	58
14	59
15	60
16	61
17	62
18	63
19	64
20	65
21	66
22	67
23	68
24	69
25	70
26	71
27	72
28	73
29	74
30	75
31	76
32	77
33	78
34	79
35	80
36	81
37	82
38	83
39	84
40	85
41	86
42	87
43	88
44	89
45	90
	91
	92
	93

CLEANING

CLEANING MUST BE DONE WITH CARBURETOR DISASSEMBLED. SOAK PARTS LONG ENOUGH TO SOFTEN AND REMOVE ALL FOREIGN MATERIAL. USE A CARBURETOR CLEANING SOLVENT. MAKE CERTAIN THE THROTTLE BODY IS FREE OF ALL CARBON DEPOSITS. WASH OFF IN SUITABLE SOLVENT. BLOW OUT ALL PASSAGES AND JETS IN CASTINGS WITH COMPRESSED AIR AND CHECK CAREFULLY TO INSURE THOROUGH CLEANING OF OBSCURE AREAS. **CAUTION: DO NOT SOAK DIAPHRAGM OR SOLENOID ASSEMBLIES (5), (7), (10), (13), (25), (40), (43), (49), CHOKE COVER (19), FLOATS (57), (60) OR PARTS MADE OF RUBBER IN ANY TYPE OF CLEANING SOLVENTS.**

REASSEMBLY

REASSEMBLE IN REVERSE ORDER OF DISASSEMBLY. NOTE SPECIAL INSTRUCTIONS AND ADJUSTMENTS.

SPECIAL INSTRUCTIONS

IDLE ADJUSTING NEEDLE (89): TO INSTALL, FIRST ASSEMBLE SPRING (90), WASHER (91), O-RING (92), ON NEEDLE. TURN NEEDLE IN UNTIL LIGHTLY SEATED, THEN BACK OUT 2 TURNS. (DO NOT INSTALL IDLE LIMITER CAP AT THIS TIME.)

THROTTLE BODY ASSEMBLY (93): WHEN INSTALLING IT TO BOWL ASSEMBLY BE SURE TO HOOK UP AUXILIARY THROTTLE LINK.

AUXILIARY IDLE ADJUSTING NEEDLE (70): TO INSTALL FIRST ASSEMBLE SPRING (71), WASHER (72), O-RING (73), ON NEEDLE. TURN NEEDLE IN UNTIL LIGHTLY SEATED THEN BACK OUT NUMBER OF TURNS COUNTED ON DISASSEMBLY (IF ORIGINAL SCREW POSITION IS NOT KNOWN, TURN THE SCREW 1 3/4 TURNS OUT FROM THE SEATED POSITION).

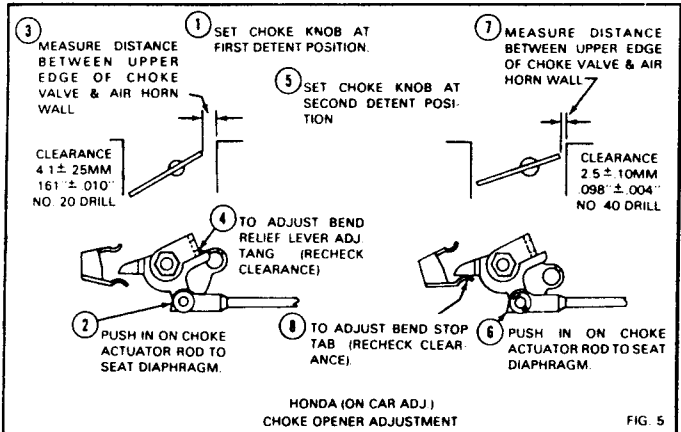
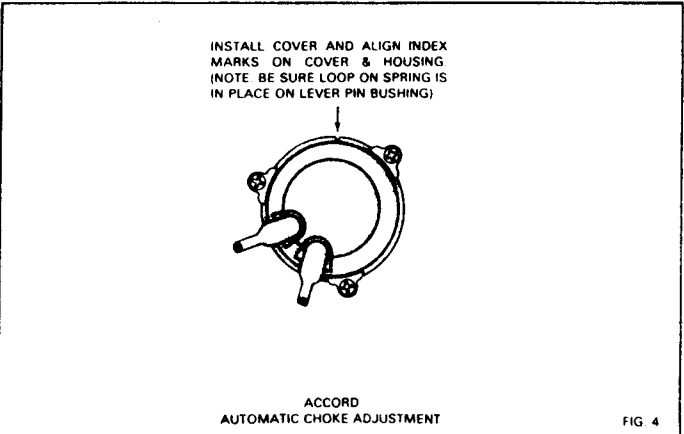
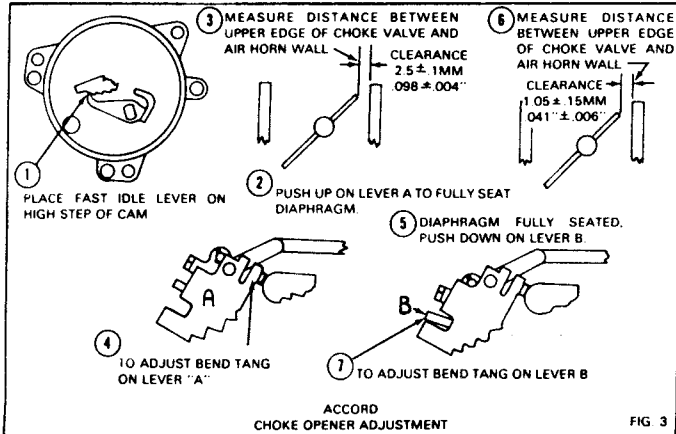
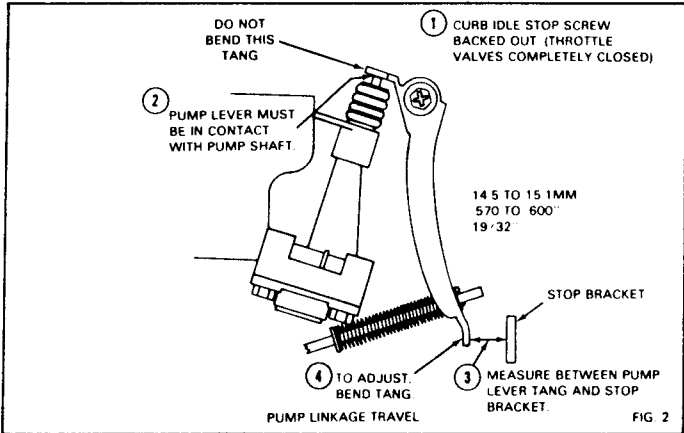
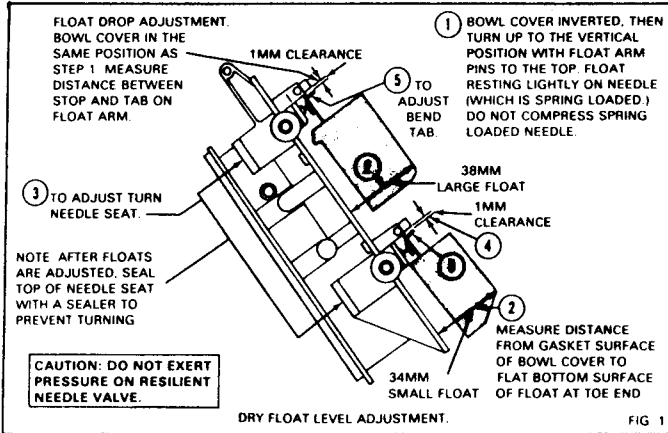
NEEDLE & SEAT ASSEMBLIES (61), (58): AFTER FLOAT LEVELS HAVE BEEN ADJUSTED, BE SURE TO SEAL SCREW HEADS OF NEEDLE SEAT WITH A SEALER TO PREVENT TURNING.

FLOAT PINS (56), (59): INSTALL WITH TAPERED ENDS TOWARDS LONG BOSS (CENTER OF BOWL COVER).

BOWL COVER SCREWS (51), (52): TIGHTEN SCREWS FROM THE CENTER OUT.

CHOKE COVER ASSY (19): WHEN INSTALLING BE SURE LOOP END OF SPRING IS PLACED ON PIN OF LEVER (ACCORD).

ADJUSTMENTS



1 ENGINE AT NORMAL OPERATING TEMPERATURE (I.E. COOLING FAN TURNS ON)
2 HEADLIGHTS ON, COOLING FAN OR HIGH SPEED HEATER FAN ON (BUT NOT BOTH FANS)
3 TURN MIXTURE SCREW IN OR OUT TO OBTAIN THE HIGHEST R P M
4 ADJUST THROTTLE STOP SCREW TO OBTAIN THE PROPER R P M (SEE CHART) RECHECK MIXTURE SCREW
5 TURN MIXTURE SCREW IN UNTIL IDLE SPEED DROPS TO 700 R P M (MANUAL) OR 650 R P M (HONDAMATIC IN GEAR)
6 INSTALL IDLE LIMITER CAP WITH POINTER 180° AWAY FROM BOSS ON CARBURETOR BODY (IF IDLE SPEED CANNOT BE ADJUSTED PROPERLY, CHECK FOR PROPER THROTTLE CABLE ADJUSTMENT)

	Transmission	49 State	Calif.	High Altitude U.S.
Honda Sedan 1978-79	Manual	810	810	810 (910 At Sea Level)
	Hondamatic (In Gear)	730	730	730 (780 At Sea Level)
Honda Wagon 1978-79	Manual	810	810	810 (910 At Sea Level)
	Hondamatic (In Gear)	730	730	730 (780 At Sea Level)
Accord Sedan 1978	Manual	790	810	810 (910 At Sea Level)
	Hondamatic (In Gear)	710	730	730 (780 At Sea Level)

IDLE SPEED/MIXTURE ADJUSTMENT (IDLE DROP METHOD) HONDA/ACCORD FIG 6

