

INSTRUCTION SHEET

OFF VEHICLE CARBURETOR SERVICE

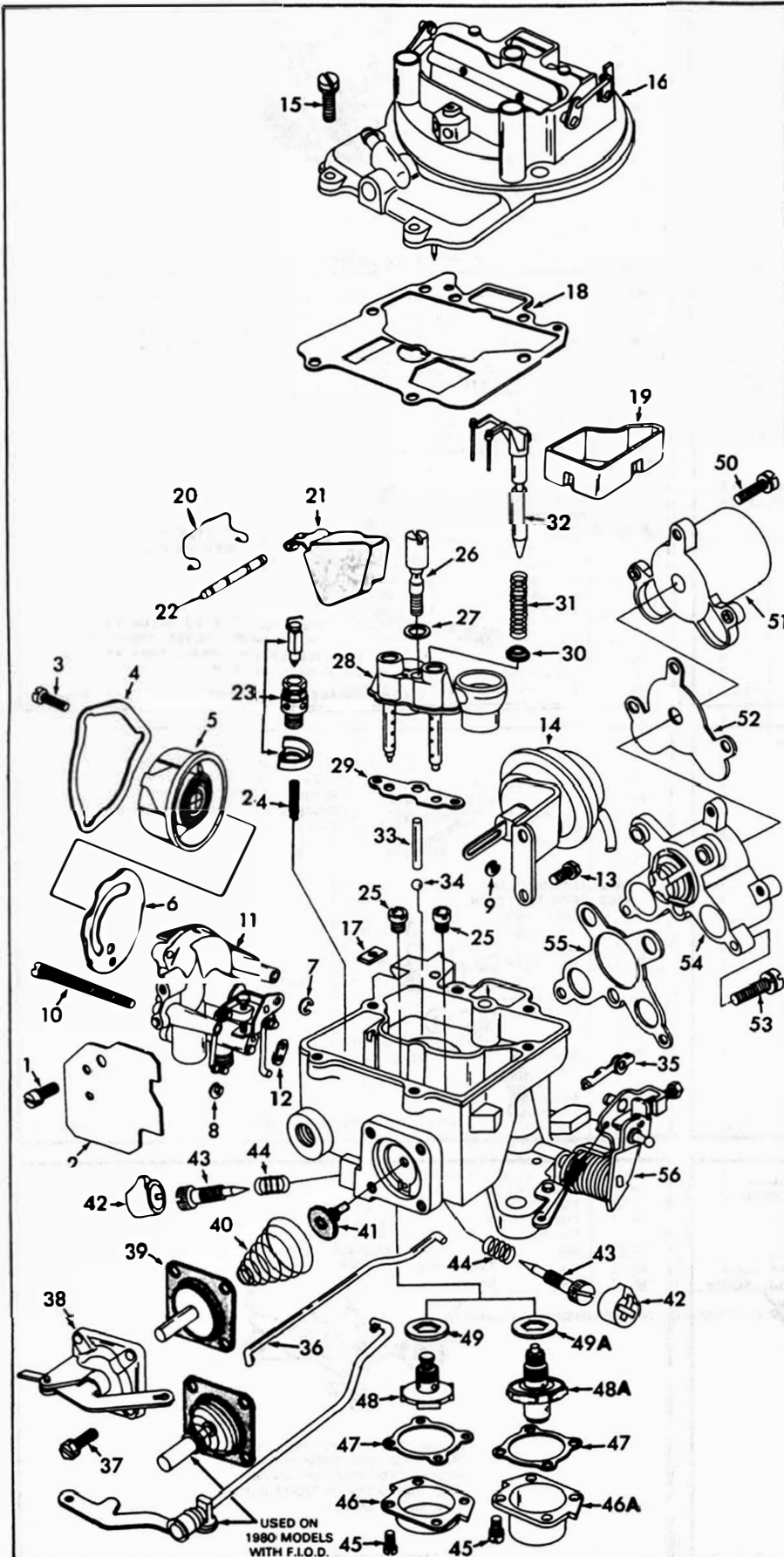
MOTORCRAFT MODEL 2150

50-547-2

(ANEROID ASSY. USED ON SOME MODELS)

GENERAL EXPLODED VIEW

THE GENERAL DESIGN AND PARTS SHOWN WILL VARY TO
INDIVIDUAL UNITS COVERED ON THIS INSTRUCTION SHEET.



DISASSEMBLY

USE EXPLODED VIEW AS A GUIDE. THE NUMERICAL SEQUENCE MAY GENERALLY BE FOLLOWED TO DISASSEMBLE UNIT FAR ENOUGH TO PERMIT CLEANING AND INSPECTION. NOTE: NOT ALL MODELS WILL BE EQUIPPED WITH A FUEL BOWL SPACER OR WITH THE ALTITUDE SYSTEM. MODELS WILL ALSO DIFFER FROM A SINGLE STAGE TO A 2 STAGE ENRICHMENT VALVE. 1980 PUMP DIAPHRAGM LEVER AND ROD ASSY. (USED ON F.I.O.D. MODELS) SHOULD NOT BE TAKEN APART. (FACTORY ADJUSTED AND SEALED.)

NOMENCLATURE

REF. NO.	REF. NO.
1. SCREW - AIR SHIELD	32. AIR METERING ROD ASSY.
2. AIR SHIELD	33. WEIGHT - PUMP DISC. BALL
3. SCREW (3) - CHOKE COVER CLAMP	34. BALL - PUMP DISC. BALL
4. CLAMP - CHOKE COVER	35. RETAINER - PUMP ROD
5. CHOKE COVER & SPRING ASSY.	36. ROD - PUMP
6. GASKET - CHOKE COVER	37. SCREW (4) - PUMP DIAPHRAGM COVER
7. RETAINER - CHOKE ROD	38. COVER & LEVER ASSY. - PUMP
8. RETAINER - FAST IDLE CAM ROD (LOWER)	39. PUMP DIAPHRAGM ASSY.
9. RETAINER - CHOKE PULLDOWN ROD	40. SPRING - PUMP DIAPHRAGM RETURN
10. SCREW & LKWSHR. (3) - CHOKE HOUSING	41. VALVE - PUMP INLET CHECK
11. CHOKE HOUSING ASSY.	42. CAP (2) - IDLE LIMITER
12. GASKET - CHOKE HOUSING	43. NEEDLE (2) - IDLE ADJUSTING
13. SCREW (2) - CHOKE PULLDOWN ASSY.	44. SPRING (2) - IDLE ADJUSTING NEEDLE
14. CHOKE PULLDOWN MOTOR & HOSE ASSY.	45. SCREW & LKWSHR. (4) - ENRICHMENT VALVE COVER
15. SCREW & LKWSHR. (6) - BOWL COVER	46. COVER - ENRICHMENT VALVE
16. BOWL COVER ASSY.	46A. COVER - ENRICHMENT VALVE (2 STAGE)
17. SEAL - CHOKE ROD	47. GASKET - ENRICHMENT VALVE COVER
18. GASKET - BOWL COVER	48. VALVE - ENRICHMENT
19. SPACER - FUEL BOWL (USED WITH SHORT FLOAT.)	48A. VALVE - ENRICHMENT (2 STAGE)
20. RETAINER - FLOAT PIN	49. GASKET - ENRICHMENT VALVE
21. FLOAT & LEVER ASSY.	49A. GASKET - ENRICHMENT VALVE (2 STAGE)
22. PIN - FLOAT LEVER	50. SCREW & LKWSHR. (3) - ANEROID ASSY.
23. NEEDLE & SEAT, BAFFLE ASSY.	51. ANEROID ASSY.
24. SCREEN - NEEDLE SEAT	52. GASKET - ANEROID ASSY.
25. JETS (2) - MAIN METERING	53. SCREW & LKWSHR. (4) - POPPET VALVE ASSY.
26. SCREW - PUMP DISCHARGE NOZZLE	54. POPPET VALVE ASSY. - ALT.
27. GASKET - NOZZLE SCREW	55. GASKET - POPPET VALVE HOUSING
28. VENTURI CLUSTER ASSY.	56. MAIN BODY ASSY.
29. GASKET - VENTURI CLUSTER	
30. RETAINER - AIR METERING ROD SPRING	
31. SPRING - AIR METERING ROD	

CLEANING

CLEANING MUST BE DONE WITH CARBURETOR DISASSEMBLED. SOAK PARTS LONG ENOUGH TO SOFTEN AND REMOVE ALL FOREIGN MATERIAL. USE A CARBURETOR CLEANING SOLVENT. MAKE CERTAIN THE THROTTLE BORES ARE FREE OF ALL CARBON AND VARNISH DEPOSITS. RINSE OFF IN SUITABLE SOLVENT. BLOW OUT ALL PASSAGES IN CASTINGS WITH COMPRESSED AIR AND CHECK CAREFULLY TO INSURE THOROUGH CLEANING OF OBSCURE AREAS. CAUTION: DO NOT SOAK PARTS CONTAINING RUBBER MATERIALS OR PARTS SUCH AS (5), (14), (21), (51), AND (54) IN CLEANING SOLVENTS.

REASSEMBLY

REASSEMBLE IN REVERSE ORDER OF DISASSEMBLY. NOTE SPECIAL INSTRUCTIONS AND FOLLOW NUMERICAL OUTLINE IN MAKING ADJUSTMENTS NECESSARY FOR CARBURETOR BEING SERVICED.

SPECIAL INSTRUCTIONS

ENRICHMENT VALVE (48) - USE CARE WHEN TIGHTENING TO PREVENT DISTORTION OF GASKET - (49).

IDLE ADJUSTING NEEDLES (43) - TURN IN UNTIL LIGHTLY SEATED, THEN BACK OUT 1 1/2 - 2 TURNS. (DO NOT INSTALL LIMITER CAPS AT THIS TIME).

PUMP INLET CHECK VALVE INSTALLATION (41) - LUBRICATE TIP OF NEW VALVE AND INSERT IN CENTER HOLE OF PUMP CAVITY. USE A NEEDLE NOSE PLIERS AND PULL THROUGH FROM FUEL BOWL SIDE UNTIL FULLY SEATED. CUT OFF VALVE TIP AT RETAINING SHOULDER.

PUMP DIAPHRAGM RETURN SPRING INSTALLATION (40) - INSTALL LARGE OPEN END OF SPRING OVER RUBBER INLET CHECK VALVE (41).

CHOKE COVER INSTALLATION (5) - BE SURE TO INSTALL BI-METAL SPRING HOOK IN SLOT OF LEVER.

ADJUSTMENTS

