

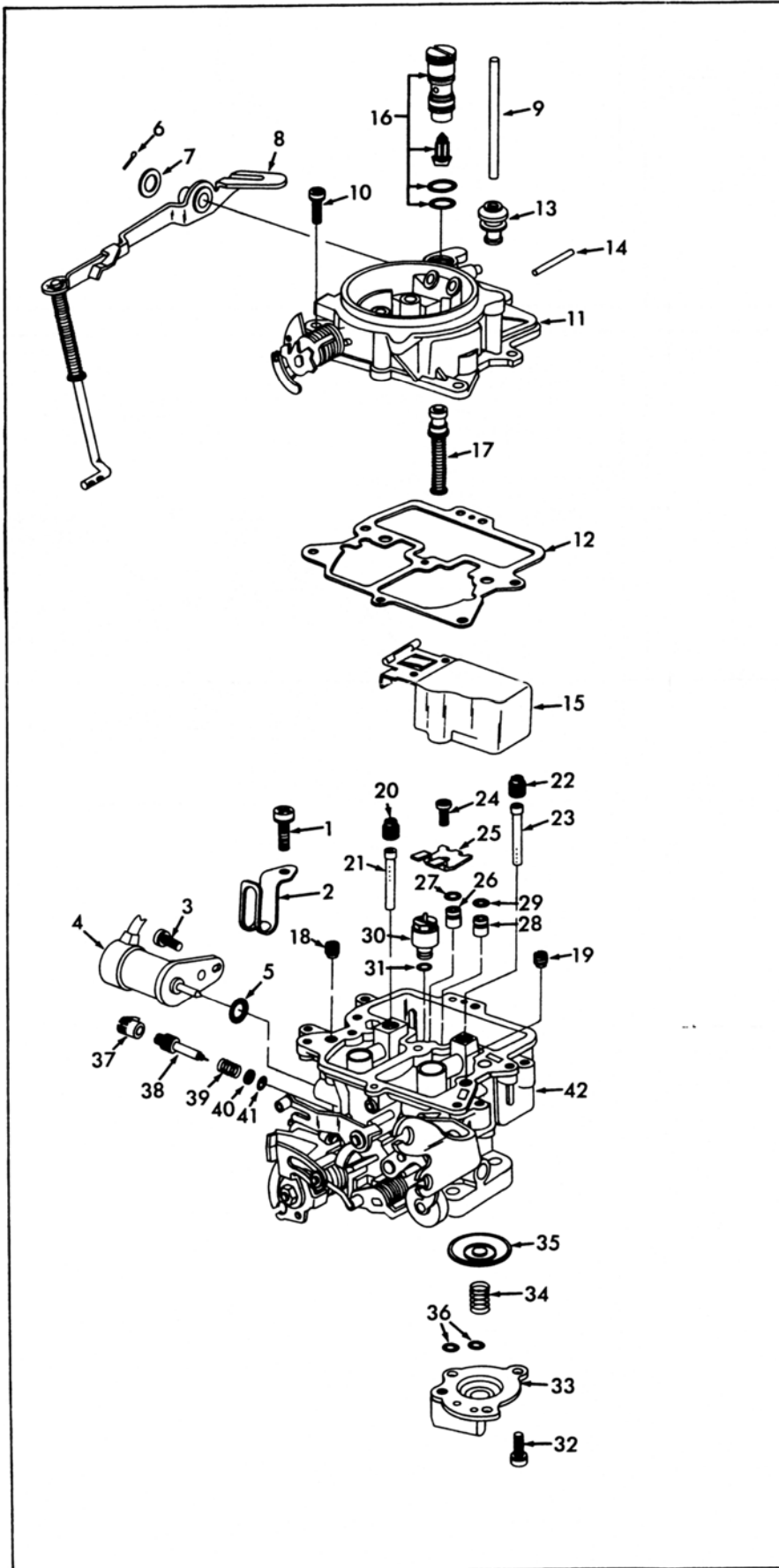
INSTRUCTION SHEET

KEIHIN CARBURETOR (HAND CHOKE)

(HONDA—CIVIC)

GENERAL EXPLODED VIEW

THE GENERAL DESIGN AND PARTS SHOWN WILL VARY TO INDIVIDUAL UNITS COVERED ON THIS INSTRUCTION SHEET



DISASSEMBLY

USE EXPLODED VIEW AS A GUIDE. THE NUMERICAL SEQUENCE MAY GENERALLY BE FOLLOWED TO DISASSEMBLE UNIT FAR ENOUGH TO PERMIT CLEANING AND INSPECTION. NOTE: FLOAT PIN (14) HAS A PRESS FIT: TO REMOVE USE A SMALL PIN PUNCH AND TAP OUT FROM THE LONG LEG SIDE. (NEVER TAP THE FLOAT LEG.) TO REMOVE POWER PISTON ASSY. (17) FIRST REMOVE STAKING FROM BOWL COVER. RECORD SIZES OF JETS & TUBES FOR PROPER ASSEMBLY. IDLE LIMITER CAP (37) CAN BE CAREFULLY PULLED OFF OF IDLE ADJ. NEEDLE. (WILL BE USED OVER.)

NOMENCLATURE

REF. NO.	REF. NO.
1. SCREW & LOCKWASHER-BRACKET	21. TUBE- PRIMARY EMULSION
2. BRACKET- WIRE LOOM	22. JET- SECONDARY MAIN AIR BLEED
3. SCREW & LOCKWASHER-SOLENOID	23. TUBE- SECONDARY EMULSION
4. SOLENOID ASSY.- IDLE SHUTOFF	24. SCREW- JET CLAMP
5. O-RING- IDLE SHUTOFF SOLENOID	25. CLAMP- JET
6. COTTER PIN- PUMP LEVER	26. JET- PRIMARY MAIN
7. WASHER- PUMP LEVER	27. O-RING- PRIMARY MAIN JET
8. PUMP LEVER, SPRING & ROD ASSY.	28. JET- SECONDARY MAIN
9. PIN- PUMP	29. O-RING- SECONDARY MAIN JET
10. SCREW & LOCKWASHER (5)- BOWL COVER	30. POWER VALVE ASSY.
11. BOWL COVER ASSY.	31. O-RING- POWER VALVE
12. GASKET- BOWL COVER	32. SCREW & LOCKWASHER (3)- COVER
13. BOOT- PUMP PIN	33. COVER- PUMP DIAPHRAGM
14. PIN- FLOAT	34. SPRING- PUMP DIAPHRAGM
15. FLOAT & LEVER ASSY.	35. DIAPHRAGM ASSY.- PUMP
16. NEEDLE & SEAT ASSY.	36. O-RING (2)- PUMP PASSAGE
17. PISTON ASSY.- POWER	37. CAP- IDLE LIMITER
18. JET- PRIMARY IDLE AIR BLEED	38. NEEDLE- IDLE ADJUSTING
19. JET- SECONDARY IDLE AIR BLEED	39. SPRING- IDLE ADJ. NEEDLE
20. JET- PRIMARY MAIN AIR BLEED	40. WASHER- IDLE ADJ. NEEDLE
	41. O-RING- IDLE ADJ. NEEDLE
	42. MAIN BODY ASSY.

CLEANING

CLEANING MUST BE DONE WITH CARBURETOR DISASSEMBLED. SOAK PARTS LONG ENOUGH TO SOFTEN AND REMOVE ALL FOREIGN MATERIAL. USE A CARBURETOR CLEANING SOLVENT. MAKE CERTAIN THE THROTTLE BODY IS FREE OF ALL CARBON DEPOSITS. WASH OFF IN SUITABLE SOLVENT. BLOW OUT ALL PASSAGES AND JETS IN CASTINGS WITH COMPRESSED AIR AND CHECK CAREFULLY TO INSURE THOROUGH CLEANING OF OBSCURE AREAS. CAUTION: DO NOT SOAK IDLE SOLENOID (4), FLOAT (15) OR PARTS MADE OF RUBBER IN ANY TYPE OF CLEANING SOLVENT.

REASSEMBLY

REASSEMBLE IN REVERSE ORDER OF DISASSEMBLY. NOTE SPECIAL INSTRUCTIONS AND ADJUSTMENTS.

SPECIAL INSTRUCTIONS

IDLE ADJUSTING NEEDLE (38)- TURN NEEDLE IN UNTIL LIGHTLY SEATED THEN BACK OUT 2 5/8 TURNS. (DO NOT INSTALL IDLE LIMITER CAP AT THIS TIME.)

POWER PISTON ASSY. (17)- AFTER INSTALLING POWER PISTON ASSY. RESTAKE BOWL COVER.

NEEDLE & SEAT ASSY. (16)- AFTER FLOAT LEVEL HAS BEEN ADJUSTED, SEAL SCREW HEAD WITH A SEALER TO PREVENT TURNING OF NEEDLE SEAT.

FLOAT PIN (14)- INSTALL WITH TAPERED END TOWARDS CENTER OF BOWL COVER. (INSERT PIN FROM THE SHORT LEG SIDE.)

PUMP PIN BOOT (13)- ENGAGE BOOT LIP SECURELY IN BOWL COVER CAVITY BEFORE INSTALLING BOWL COVER.

ADJUSTMENTS

