

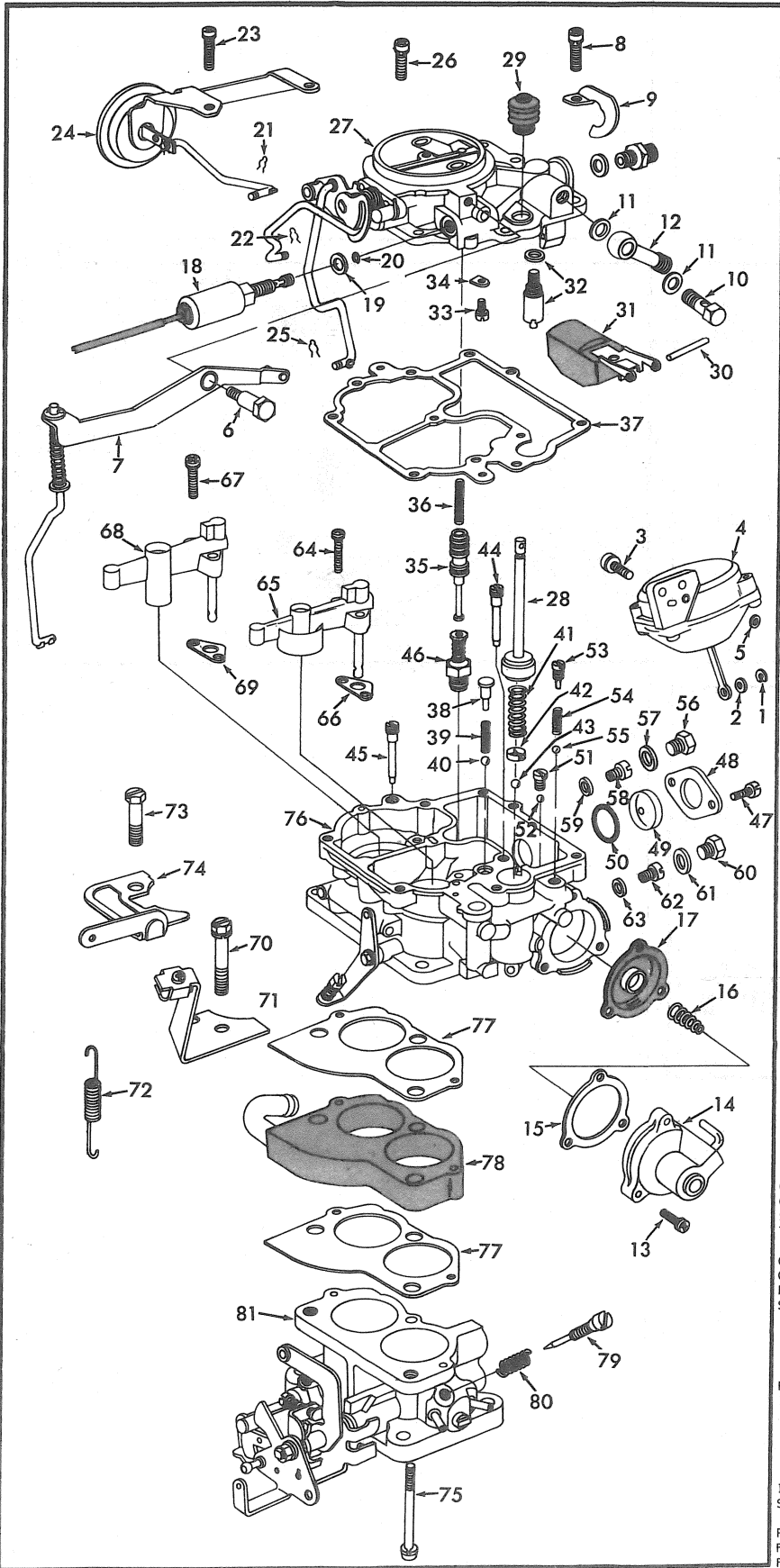
# INSTRUCTION SHEET

## AISAN CARBURETOR

### 2F ENGINE

#### GENERAL EXPLODED VIEW

THE GENERAL DESIGN AND PARTS SHOWN WILL VARY TO INDIVIDUAL UNITS COVERED ON THIS INSTRUCTION SHEET



#### DISASSEMBLY

USE EXPLODED VIEW AS A GUIDE. THE NUMERICAL SEQUENCE MAY GENERALLY BE FOLLOWED TO DISASSEMBLE UNIT FOR ENOUGH TO PERMIT CLEANING AND INSPECTION. NOTE: DISASSEMBLY OF THE SECONDARY VACUUM UNIT (4) IS NOT NECESSARY UNLESS DIAPHRAGM IS BEING REPLACED. INSULATOR BLOCK (78) HAS A BONDED GASKET ON EACH SURFACE, IT WILL BE NECESSARY TO CAREFULLY REMOVE OLD GASKETS FROM BLOCK BEFORE REASSEMBLY. RECORD JET SIZES FOR PROPER REASSEMBLY.

#### NOMENCLATURE

REF. NO.	REF. NO.
1. E-CLIP- SEC. DIAPHRAGM LINK	40. BALL- PUMP DISC. CHECK (LARGE)
2. WASHER- SEC. DIAPHRAGM LINK	41. SPRING- PUMP RETURN
3. SCREW & WASHERS (2)- SEC. DIAPHRAGM ASSY.	42. RETAINER- PUMP INTAKE BALL
4. SECONDARY DIAPHRAGM ASSY.	43. BALL- PUMP INTAKE CHECK (SMALL)
5. GASKET- SEC. DIAPHRAGM ASSY.	44. JET- PRIMARY SLOW
6. BOLT- PUMP LEVER	45. JET--SECONDARY SLOW
7. PUMP LEVER & ROD ASSY.	46. POWER VALVE ASSY.
8. SCREW & LOCKWASHER- BANJO FITTING LOCK	47. SCREW (2)- WINDOW RETAINER
9. LOCK- BANJO FITTING	48. RETAINER- WINDOW
10. BOLT- BANJO FITTING	49. WINDOW- FUEL BOWL
11. GASKET (2)- BANJO FITTING	50. GASKET- WINDOW
12. BANJO FITTING- (FUEL RETURN)	51. PLUG- AUX. INTAKE CHECK
13. SCREW & LOCKWASHER (3)- AUX. PUMP COVER	52. BALL- AUX. INTAKE CHECK
14. COVER- AUX. PUMP	53. PLUG- AUX. DISC. CHECK
15. GASKET- COVER	54. SPRING- AUX. DISC. CHECK BALL
16. SPRING- AUX. PUMP DIAPHRAGM	55. BALL- AUX. DISC. CHECK
17. DIAPHRAGM- AUX. PUMP	56. PLUG- SEC. MAIN JET
18. SOLENOID- IDLE CUT OFF	57. GASKET- PLUG
19. GASKET- SOLENOID	58. JET- SEC. MAIN (CROME)
20. O RING- SOLENOID	59. GASKET- JET
21. RETAINER- THROTTLE POSITIONER	60. PLUG- PRI. MAIN JET
22. RETAINER- CHOKE PULL OFF LINK	61. GASKET- PLUG
23. SCREW & LOCKWASHER (2)- CHOKE PULL OFF ASSY.	62. JET- PRI MAIN (BRASS)
24. CHOKE PULL OFF ASSY.	63. GASKET- JET
25. RETAINER- FAST IDLE ROD	64. SCREW & LOCKWASHER (2)- PRI. VENTURI
26. SCREW & LOCKWASHER (4)- BOWL COVER	65. PRI. VENTURI ASSY.
27. BOWL COVER ASSY.	66. GASKET- PRI. VENTURI
28. PUMP PLUNGER ASSY.	67. SCREW & LOCKWASHER (2)- SEC. VENTURI
29. BOOT- PUMP.	68. SEC. VENTURI ASSY.
30. PIN- FLOAT LEVER	69. GASKET- SEC. VENTURI
31. FLOAT & LEVER ASSY.	70. SCREW & LOCKWASHER- CHOKE BRACKET
32. NEEDLE, SEAT & GASKET ASSY.	71. BRACKET- CHOKE CABLE
33. SCREW & LOCKWASHER- PISTON RETAINER	72. SPRING- THROTTLE RETURN
34. RETAINER- PISTON	73. SCREW & LOCKWASHER- SPRING BRACKET
35. PISTON- POWER VALVE	74. BRACKET- THROTTLE RETURN SPRING
36. SPRING- POWER VALVE PISTON	75. SCREW & LOCKWASHER- THROTTLE BODY
37. GASKET- BOWL COVER.	76. FLOAT BOWL ASSY.
38. STOPPER- PUMP SPRING	77. GASKET (2)- THROTTLE BODY
39. SPRING- PUMP DISC. BALL	78. INSULATOR- THROTTLE BODY
	79. NEEDLE- IDLE ADJUSTING
	80. SPRING- IDLE ADJ. NEEDLE
	81. THROTTLE BODY ASSY.

#### CLEANING

CLEANING MUST BE DONE WITH CARBURETOR DISASSEMBLED. USE A CARBURETOR CLEANING SOLVENT. SOAK PARTS LONG ENOUGH TO SOFTEN AND REMOVE ALL FOREIGN MATERIAL. MAKE CERTAIN THE THROTTLE BORES ARE FREE OF ALL CARBON DEPOSITS. WASH OFF IN SUITABLE SOLVENT. BLOW OUT ALL PASSAGES IN CASTINGS WITH COMPRESSED AIR AND CHECK CAREFULLY TO INSURE THOROUGH CLEANING OF OBSCURE AREAS. CAUTION: DO NOT SOAK RUBBER PARTS, SOLENOIDS, DIAPHRAGM ASSY'S OR FLOAT IN CLEANING SOLVENTS.

#### REASSEMBLY

REASSEMBLE IN REVERSE ORDER OF DISASSEMBLY. NOTE SPECIAL INSTRUCTIONS AND ADJUSTMENTS.

#### SPECIAL INSTRUCTIONS

IDLE ADJUSTING NEEDLE (79)- TURN NEEDLE IN UNTIL LIGHTLY SEATED, THEN BACK OUT 1 1/2 TURNS.

PUMP PLUNGER (28)- REMOVE PAPER SLEEVE FROM LEATHER CUP, FLEX LEATHER OUTWARD SLIGHTLY. SOAK CUP IN LIGHT OIL A FEW MINUTES PRIOR TO PLACING IN CARBURETOR.

# ADJUSTMENTS

