

INSTRUCTION SHEET

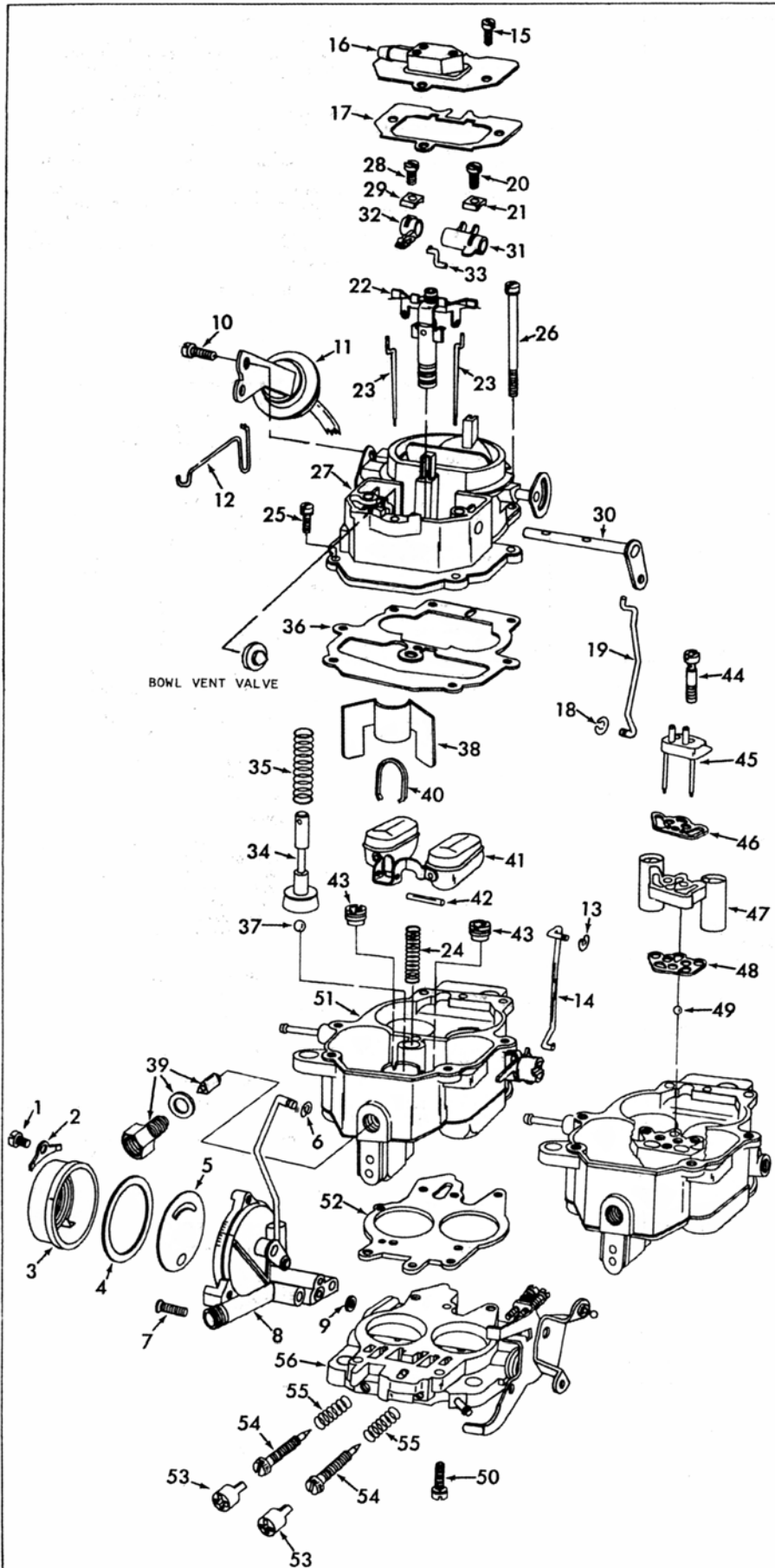
OFF VEHICLE CARBURETOR SERVICE

CARTER MODEL — BBD

50-529-8

GENERAL EXPLODED VIEW **HOT/AIR CHOKE**

THE GENERAL DESIGN AND PARTS SHOWN WILL VARY TO
INDIVIDUAL UNITS COVERED ON THIS INSTRUCTION SHEET.



DISASSEMBLY

USE EXPLODED VIEW AS A GUIDE. THE NUMERICAL SEQUENCE MAY GENERALLY BE FOLLOWED TO DISASSEMBLE UNIT FAR ENOUGH TO PERMIT CLEANING AND INSPECTION. NOTE: TURN IDLE LIMITER CAPS AGAINST STOPS. THEN IDLE LIMITER CAPS CAN BE REMOVED BY INSTALLING A NO. 10 SHEET METAL SCREW INTO CENTER OF CAP AND TURN CLOCKWISE. CAP REMOVED COUNT NUMBER OF TURNS REQUIRED TO SEAT EACH SCREW & RECORD. (MODELS WITH BOWL VENT VALVE, ROTATE LEVER UP AS FAR AS POSSIBLE TO REMOVE RUBBER VENT VALVE FROM LEVER.)

NOMENCLATURE

REF. NO.	REF. NO.
1. SCREW (3)- CHOKE COVER RETAINER	29. WASHER- PUMP ARM
2. RETAINER(3)-CHOKE COVER	30. SHAFT- PUMP
3. CHOKE COVER ASSY.	31. ARM- METERING ROD
4. GASKET- CHOKE COVER	32. ARM- PUMP LINK
5. BAFFLE- CHOKE HOUSING	33. LINK- PUMP
6. RETAINER- CHOKE ROD	34. PUMP ASSY.
7. SCREW (2)- CHOKE HOUSING	35. SPRING- PUMP
8. HOUSING ASSY.- CHOKE	36. GASKET- BOWL COVER
9. SEAL- VAC. PASSAGE	37. BALL- PUMP INTAKE CHECK (LARGE)
10. SCREW (2)- CHOKE PULL OFF	38. BAFFLE- FUEL BOWL
11. CHOKE PULL OFF ASSY.	39. NEEDLE, SEAT & GASKET ASSY.
12. LINK- CHOKE PULL OFF	40. RETAINER- FLOAT PIN
13. RETAINER- FAST IDLE ROD	41. FLOAT ASSY.
14. ROD- FAST IDLE	42. PIN- FLOAT
15. SCREW (3)- DUST COVER	43. JET (2)- MAIN
16. COVER ASSY.- DUST	44. SCREW (2)- VENTURI CLUSTER
17. GASKET- COVER	45. COVER- VENTURI
18. RETAINER- PUMP ROD	46. GASKET- VENTURI COVER
19. ROD- PUMP	47. CLUSTER ASSY. VENTURI
20. SCREW- METERING ROD ARM WASHER	48. GASKET- VENTURI CLUSTER
21. WASHER- METERING ROD ARM	49. BALL- PUMP DISC. CHECK (SMALL)
22. PISTON ASSY.- VACUUM	50. SCREW & LOCKWASHER (2)- THROTTLE BODY
23. ROD (2)- METERING	51. BOWL ASSY.
24. SPRING- VACUUM PISTON	52. GASKET- THROTTLE BODY
25. SCREW & LOCKWASHER (4)- BOWL COVER	53. CAP (2)- IDLE LIMITER
26. SCREW & LOCKWASHER (2)- BOWL COVER	54. NEEDLE (2)- IDLE ADJUSTING
27. BOWL COVER ASSY.	55. SPRING (2)- IDLE ADJ. NEEDLE
28. SCREW- PUMP ARM WASHER	56. THROTTLE BODY ASSY.

CLEANING

CLEANING MUST BE DONE WITH CARBURETOR DISASSEMBLED. SOAK PARTS LONG ENOUGH TO SOFTEN AND REMOVE ALL FOREIGN MATERIAL. USE A CARBURETOR CLEANING SOLVENT. MAKE CERTAIN THE THROTTLE BORES ARE FREE OF ALL CARBON AND VARNISH DEPOSITS. RINSE OFF IN SUITABLE SOLVENT. BLOW OUT ALL PASSAGES IN CASTINGS WITH COMPRESSED AIR AND CHECK CAREFULLY TO INSURE THOROUGH CLEANING OF OBSCURE AREAS. CAUTION: DO NOT SOAK ASSEMBLYS WITH ATTACHED PLASTIC PARTS FOR A LONG PERIOD OF TIME. DO NOT SOAK ANY PARTS CONTAINING RUBBER OR DIAPHRAGM ASSYS.

REASSEMBLY

REASSEMBLE IN REVERSE ORDER OF DISASSEMBLY. NOTE SPECIAL INSTRUCTIONS AND FOLLOW NUMERICAL OUTLINE IN MAKING ADJUSTMENTS NECESSARY FOR CARBURETOR BEING SERVICED.

SPECIAL INSTRUCTIONS

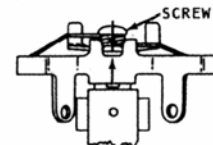
IDLE ADJUSTING NEEDLES (54)- TURN IN UNTIL LIGHTLY SEATED THEN BACK OUT NUMBER OF TURNS COUNTED ON DISASSEMBLY

FLOAT (41)- IF THE ARM NEEDLE CONTACT SURFACE IS GROOVED & FLOAT IS SERVICEABLE, POLISH THE NEEDLE CONTACT SURFACE OF THE ARM WITH CROCUS CLOTH.

RETAINER FLOAT PIN (40)- BE SURE RETAINER IS SEATING ON FLOAT PIN AND NOT HUNG UP IN GUIDE SLOTS.

PUMP ARM(32)- BE SURE S LINK IS IN THE OUTER HOLE OF THE PUMP ARM

PUMP PLUNGER(34)- LIGHTLY LUBRICATE CUP BEFORE INSTALLING.



VACUUM PISTON ASSY.(22)- BEFORE INSTALLING, ADJUST THE GAP (AS ILLUSTRATED) BY TURNING ALLEN HEAD SCREW ON TOP OF PISTON.

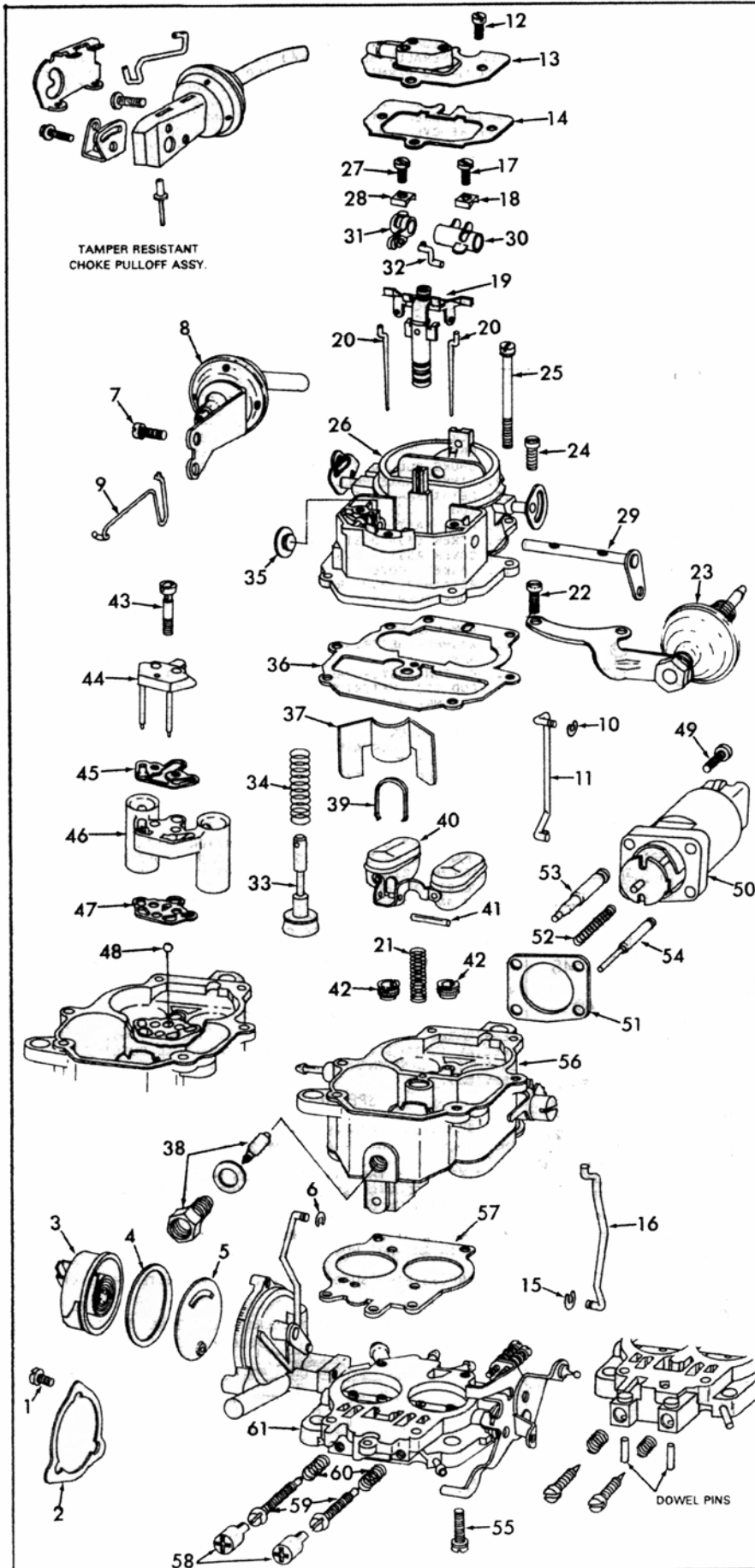
CARBURETOR MOUNTING NUTS.- LOOSELY TIGHTEN NUTS THEN ALTERNATELY TIGHTEN IN A CRISSCROSS PATTERN TO 13 FT. LBS TORQUE.

INSTRUCTION SHEET CARTER CARBURETOR — MODEL BBD

WITH/STEPPER MOTOR

GENERAL EXPLODED VIEW

THE GENERAL DESIGN AND PARTS SHOWN WILL VARY TO INDIVIDUAL UNITS COVERED ON THIS INSTRUCTION SHEET.



DISASSEMBLY

USE EXPLODED VIEW AS A GUIDE. THE NUMERICAL SEQUENCE MAY GENERALLY BE FOLLOWED TO DISASSEMBLE UNIT FAR ENOUGH TO PERMIT CLEANING AND INSPECTION. NOTE: TURN IDLE LIMITER CAPS AGAINST STOPS. THEN IDLE LIMITER CAPS CAN BE REMOVED BY INSTALLING A NO. 10 SHEET METAL SCREW INTO CENTER OF CAP AND TURN CLOCKWISE. CAP REMOVED - COUNT NUMBER OF TURNS REQUIRED TO SEAT EACH SCREW AND RECORD. (MODELS WITH BOWL VENT VALVE, ROTATE LEVER UP AS FAR AS POSSIBLE TO REMOVE RUBBER VENT VALVE FROM LEVER.)

TAMPER RESISTANT MODELS. GRIND HEADS OFF THE BREAKAWAY SCREWS RETAINING CHOKE COVER. REMOVE RETAINER COVER, GASKET, BAFFLE AND REMAINING PORTION OF SCREWS.

MODELS WITH MICRO SWITCH MOUNTED ON THE THROTTLE BODY, REMOVE CHOKE HOUSING AND MICRO SWITCH BEFORE CLEANING. MODELS WITH CHOKE PULL-OFF LINKAGE COVER, DRILL OFF POP-RIIET HEAD AND PUNCH OUT THE REMAINING PORTION OF RIVET TO REMOVE COVER. IDLE MIXTURE NEEDLES SEALED WITH A DOWEL PIN. TO REMOVE PIN USE A SHARP PUNCH HELD AT AN ANGLE AND DRIVE PIN OUT BOTTOM OF HOLE.

NOMENCLATURE

REF. NO.	REF. NO.
1 SCREW (3) - RETAINER	32 LINK - PUMP
2 RETAINER - CHOKE COVER	33 PUMP ASSY.
3 CHOKE COVER ASSY.	34 SPRING - PUMP
4 GASKET - CHOKE COVER	35 VALVE - BOWL VENT
5 BAFFLE - CHOKE HOUSING	36 GASKET - BOWL COVER
6 RETAINER - CHOKE ROD	37 BAFFLE - FUEL BOWL
7 SCREW (2) - CHOKE PULL OFF	38 NEEDLE, SEAT & GASKET ASSY.
8 CHOKE PULL OFF ASSY.	39 RETAINER - FLOAT PIN
9 LINK - CHOKE PULL OFF	40 FLOAT ASSY.
10 RETAINER - FAST IDLE ROD	41 PIN - FLOAT
11 ROD - FAST IDLE	42 JET (2) - MAIN
12 SCREW (3) - DUST COVER	43 SCREW (2) - VENTURI CLUSTER
13 COVER ASSY. - DUST	44 COVER - VENTURI
14 GASKET - DUST COVER	45 GASKET - VENTURI COVER
15 RETAINER - PUMP ROD	46 CLUSTER ASSY. - VENTURI
16 ROD - PUMP	47 GASKET - VENTURI CLUSTER
17 SCREW - METERING ROD ARM WASHER	48 BALL - PUMP DISC CHECK
18 WASHER - METERING ROD ARM	49 SCREW (4) - STEPPER MOTOR
19 PISTON ASSY. - VACUUM	50 STEPPER MOTOR ASSY.
20 ROD (2) - METERING	51 GASKET - STEPPER MOTOR
21 SPRING - VACUUM PISTON	52 SPRING - STEPPER MOTOR
22 SCREW & LKWSHR (2) - DASH POT	53 PIN - METERING (MAIN SYSTEM)
23 DASH POT & BRACKET ASSY.	54 PIN - METERING (LOW SPEED)
24 SCREW & LKWSHR (2) - BOWL COVER	55 SCREW & LKWSHR (2) - THROTTLE BODY
25 SCREW & LKWSHR (2) - BOWL COVER	56 BOWL ASSY.
26 BOWL COVER ASSY.	57 GASKET - THROTTLE BODY
27 SCREW - PUMP ARM WASHER	58 CAP (2) - IDLE LIMITER
28 WASHER - PUMP ARM	59 NEEDLE (2) - IDLE ADJUSTING
29 SHAFT - PUMP	60 SPRING (2) - IDLE ADJ. NEEDLE
30 ARM - METERING ROD	61 THROTTLE BODY ASSY.
31 ARM - PUMP LINK	

CLEANING

CLEANING MUST BE DONE WITH CARBURETOR DISASSEMBLED. SOAK PARTS LONG ENOUGH TO SOFTEN AND REMOVE ALL FOREIGN MATERIAL. USE A CARBURETOR CLEANING SOLVENT. MAKE CERTAIN THE THROTTLE BORES ARE FREE OF ALL CARBON AND VARNISH DEPOSITS. RINSE OFF IN SUITABLE SOLVENT BLOW OUT ALL PASSAGES IN CASTINGS WITH COMPRESSED AIR AND CHECK CAREFULLY TO INSURE THOROUGH CLEANING OF OBSCURE AREAS. CAUTION: DO NOT SOAK ASSEMBLYS WITH ATTACHED PLASTIC PARTS FOR A LONG PERIOD OF TIME. DO NOT SOAK ANY PARTS CONTAINING RUBBER OR DIAPHRAGM ASSEMBLYS.

REASSEMBLY

REASSEMBLE IN REVERSE ORDER OF DISASSEMBLY. NOTE SPECIAL INSTRUCTIONS AND FOLLOW NUMERICAL OUTLINE IN MAKING ADJUSTMENTS NECESSARY FOR CARBURETOR BEING SERVICED.

NOTE SPECIAL PROCEDURE ON TAMPER RESISTANT MODELS SEE FIG. 5 & 6.

SPECIAL INSTRUCTIONS

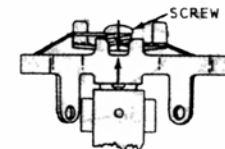
IDLE ADJUSTING NEEDLES (59) - TURN IN UNTIL LIGHTLY SEATED THEN BACK OUT NUMBER OF TURNS COUNTED ON DISASSEMBLY.

FLOAT (40) - IF THE ARM NEEDLE CONTACT SURFACE IS GROOVED & FLOAT IS SERVICEABLE, POLISH THE NEEDLE CONTACT SURFACE OF THE ARM WITH CROCUS CLOTH.

RETAINER FLOAT PIN (39) - BE SURE RETAINER IS SEATING ON FLOAT PIN AND NOT HUNG UP IN GUIDE SLOTS.

PUMP ARM (31) - BE SURE S LINK IS IN THE OUTER HOLE OF THE PUMP ARM

PUMP PLUNGER (33) - LIGHTLY LUBRICATE CUP BEFORE INSTALLING.

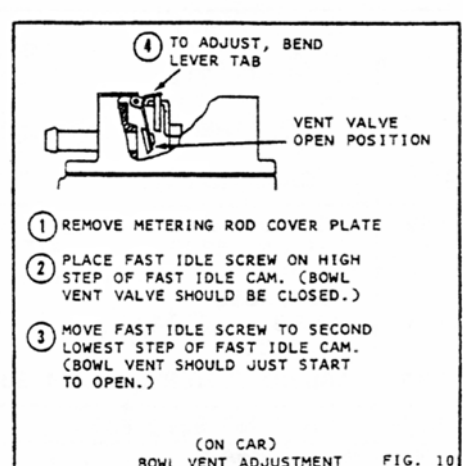
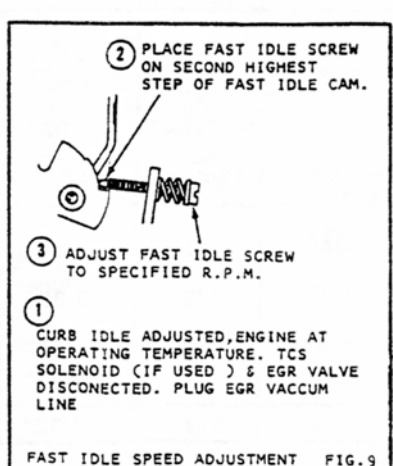
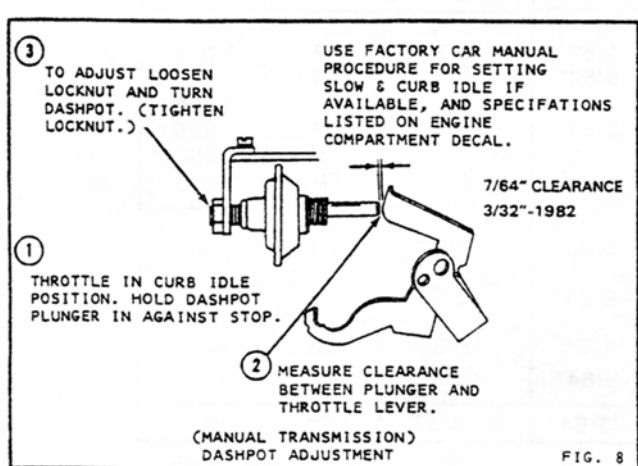
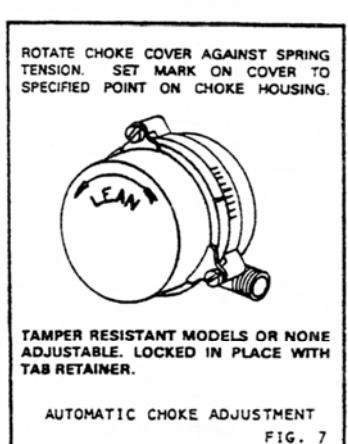
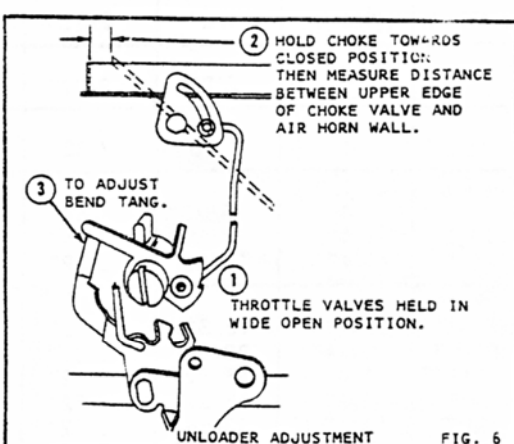
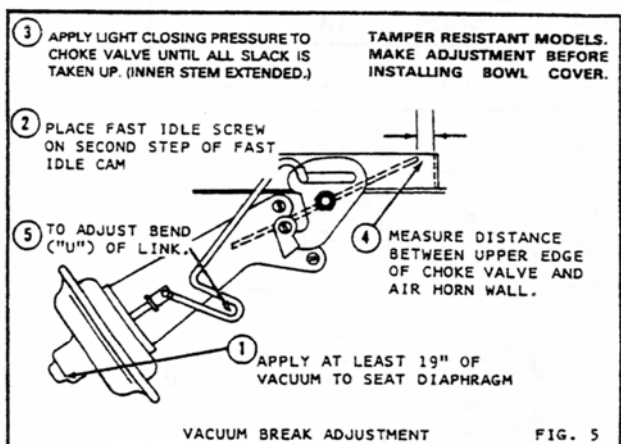
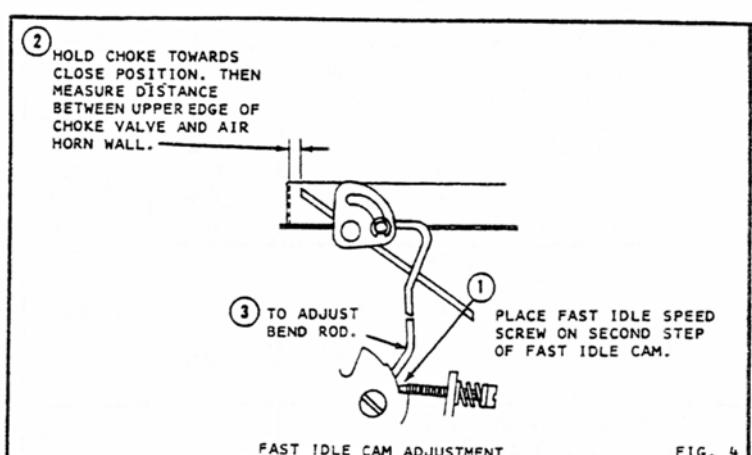
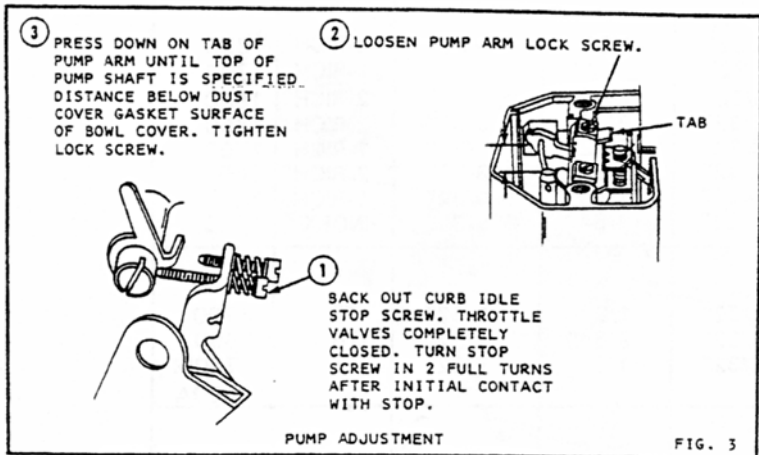
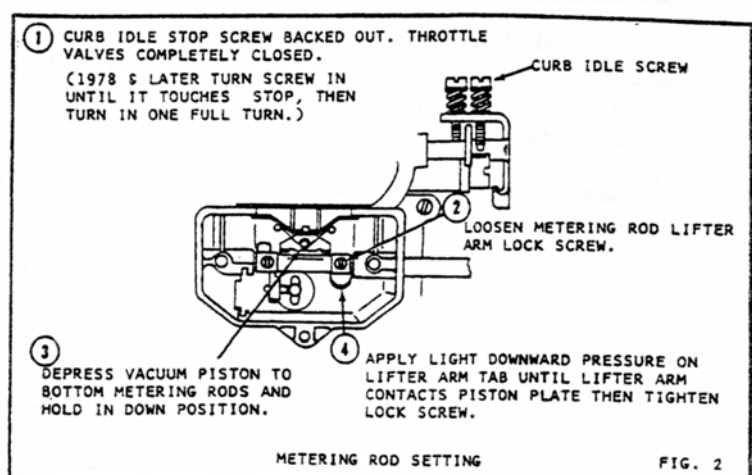
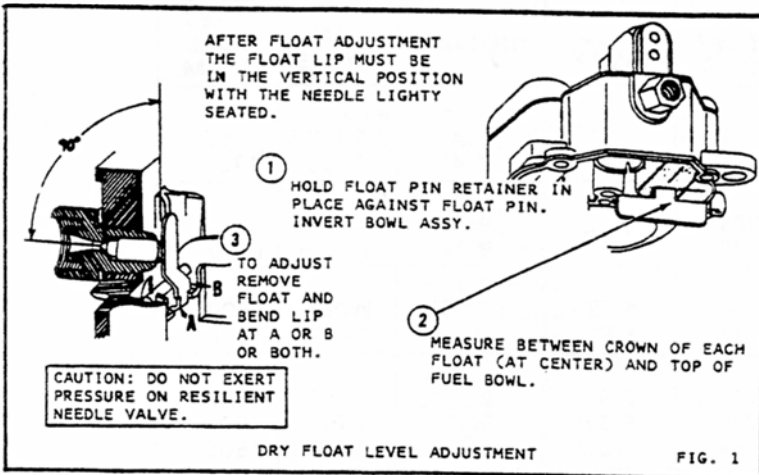


1974 - 83 .035" GAP

VACUUM PISTON ASSY. (19) - BEFORE INSTALLING, ADJUST THE GAP (AS ILLUSTRATED) BY TURNING ALLEN HEAD SCREW ON TOP OF PISTON

CARBURETOR MOUNTING NUTS - LOOSELY TIGHTEN NUTS THEN ALTERNATELY TIGHTEN IN A CRISSCROSS PATTERN TO 13 FT. LBS. TORQUE.

ADJUSTMENTS



ADJUSTMENT DATA TABLE

	APPLICATION	DRY FLOAT LEVEL	PUMP SETTING	FAST IDLE CAM SETTING	VACUUM BREAK	UNLOADER	AUTO CHOKE	FAST IDLE R.P.M.	
1976	AMERICAN MTRS. 258" ENG.	A/T	1/4"	1/2"	3/32"	1/8"	1/4"	2-RICH	1700
		M/T	1/4"	1/2"	3/32"	1/8"	1/4"	1-RICH	1700
1977	AMERICAN MTRS. 258" ENG.	A/T	1/4"	1/2"	7/64"	5/32"	9/32"	1-RICH	1600
		M/T	1/4"	1/2"	3/32"	1/8"	9/32"	1-RICH	1500
1978	AMERICAN MTRS. 258" ENG.	A/T	1/4"	1/2"	7/64"	5/32"	9/32"	INDEX	1600
		M/T	1/4"	1/2"	3/32"	1/8"	9/32"	1-RICH	1500
1979	AMERICAN MTRS. 258" ENG.	A/T	1/4"	15/32"	7/64"	9/64"	9/32"	1-RICH	1600
	H/T (Carb. NO. 8221)	A/T	1/4"	17/32"	7/64"	5/32"	9/32"	1-RICH	1600
	ALL	M/T	1/4"	17/32"	7/64"	5/32"	9/32"	1-RICH	1500
1980	AMERICAN MTRS. 258" ENG.								
	CARB. NO. 8216 CALIF.	A/T	1/4"	33/64"	3/32"	9/64"	9/32"	2-RICH	1850
	CARB. NO. 8247 CALIF.	M/T	1/4"	33/64"	3/32"	5/32"	9/32"	1-RICH	1700
	CARB. NO. 8253 CALIF.	A/T	1/4"	15/32"	3/32"	1/8"	9/32"	2-RICH	1850
	CARB. NO. 8246 49S	M/T	1/4"	33/64"	3/32"	9/64"	9/32"	2-RICH	1850
	CARB. NO. 8248 49S	A/T	1/4"	33/64"	3/32"	5/32"	9/32"	1-RICH	1700
	CARB. NO. 8256 49S	A/T	1/4"	15/32"	3/32"	1/8"	9/32"	2-RICH	1850
	CARB. NO. 8313 49S	A/T	1/4"	33/64"	3/32"	1/8"	9/32"	1-RICH	1850
CARB. NO. 8278 ALT.	A/T	1/4"	17/32"	3/32"	9/64"	9/32"	INDEX	1850	
1981	AMERICAN MTRS. 258" ENG.								
	CARB. NO. 8308, 8309 ALL/T		1/4"	33/64"	3/32"	1/8"	9/32"	TR	1700
	CARB. NO. 8310	A/T	1/4"	33/64"	3/32"	9/64"	9/32"	TR	1850
	ALL OTHERS	ALL/T	1/4"	1/2"	3/32"	1/8"	9/32"	TR	1700M 1850A
1982-86	AMERICAN MTRS. 258" ENG. CARB. NO. 8310, 8338, 8339, 8360, 8362, 8364, 8367, 8383, 8384 ALL/T		1/4"	1/2"	3/32"	9/64"	9/32"	TR	--
1977	JEEP, TRUCK 258" ENG.	ALL/T	1/4"	7/16"	3/32"	9/64"	9/32"	2-RICH	1650
1978	JEEP (ALL MODELS) 258" ENG.	ALL/T	1/4"	7/16"	3/32"	9/64"	9/32"	2-RICH	1650
1979	JEEP (ALL MODELS) 258" ENG.	A/T	1/4"	15/32"	7/64"	9/64"	9/32"	1-RICH	1600
		M/T	1/4"	17/32"	7/64"	5/32"	9/32"	1-RICH	1500
	H/T (CARB. NO. 8229)	M/T	1/4"	17/32"	3/32"	1/8"	9/32"	1-RICH	1500
1980	JEEP 258" ENG.								
	CARB. NO. 8253 CALIF.	A/T	1/4"	15/32"	3/32"	1/8"	9/32"	2-RICH	1850
	CARB. NO. 8254 CALIF.	M/T	1/4"	33/64"	3/32"	1/8"	9/32"	2-RICH	1700
	CARB. NO. 8255 49S	ALL/T	1/4"	15/32"	3/32"	9/64"	9/32"	2-RICH	1700M
	CARB. NO. 8256 49S	A/T	1/4"	15/32"	3/32"	1/8"	9/32"	2-RICH	1850
	CARB. NO. 8257 49S	M/T	1/4"	33/64"	3/32"	1/8"	9/32"	2-RICH	1700
CARB. NO. 8277 ALT.	M/T	1/4"	33/64"	3/32"	1/8"	9/32"	1-RICH	1700	
1981	JEEP 258" ENG.								
	CARB. NO. 8311	M/T	1/4"	33/64"	.085"	1/8"	9/32"	TR	1700
	CARB. NO. 8312	ALL/T	1/4"	1/2"	3/32"	9/64"	9/32"	TR	1700M 1850A
	ALL OTHERS	ALL/T	1/4"	33/64"	3/32"	9/64"	9/32"	TR	1850A 1700M
1981-82	CARB. NO. 8310		1/4"	33/64"	3/32"	9/64"	9/32"	TR	1850
1982	JEEP 258" ENG.								
	CARB. NO. 8340	A/T	1/4"	1/2"	7/64"	5/32"	9/32"	TR	--
	CARB. NO. 8341, 8354, 8355		1/4"	1/2"	3/32"	9/64"	9/32"	TR	--
	CARB. NO. 8349, 8351, 8357		1/4"	1/2"	3/32"	1/8"	9/32"	TR	--
1983	CARB. NO. 8360, 8362, 8364, 8367		1/4"	1/2"	3/32"	9/64"	9/32"	TR	--
1984-86	CARB. NO. 8383, 8384		1/4"	1/2"	3/32"	9/64"	9/32"	TR	--

H/T=HILLY TERRAIN
TR=TAMPER RESISTANT