

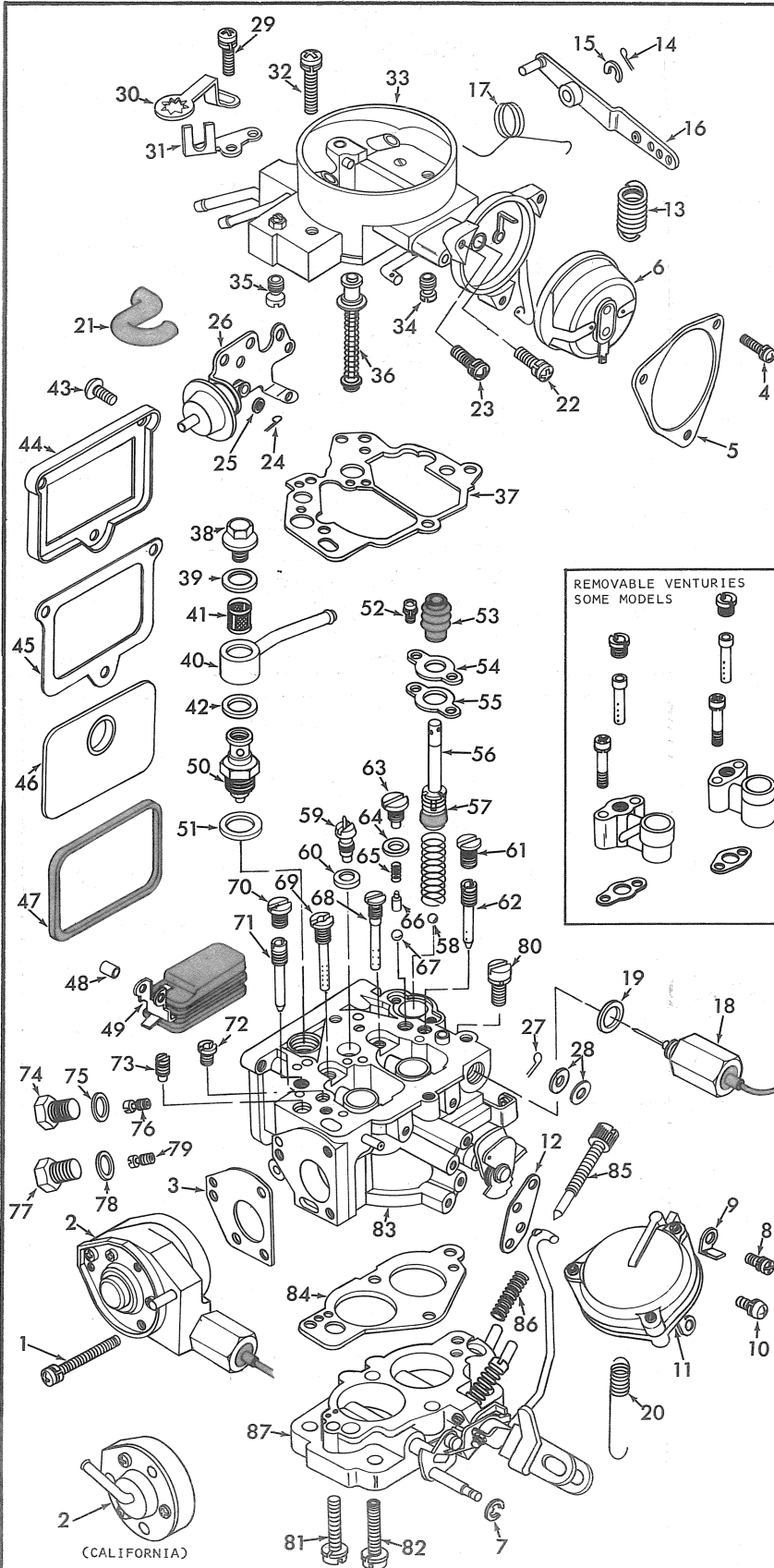
INSTRUCTION SHEET HITACHI CARBURETOR - MODEL DCH 340

50-517-2

(LATE DESIGN)

GENERAL EXPLODED VIEW

THE GENERAL DESIGN AND PARTS SHOWN WILL VARY TO INDIVIDUAL UNITS COVERED ON THIS INSTRUCTION SHEET.



DISASSEMBLY

USE EXPLODED VIEW AS A GUIDE. THE NUMERICAL SEQUENCE MAY GENERALLY BE FOLLOWED TO DISASSEMBLE UNIT FAR ENOUGH TO PERMIT CLEANING AND INSPECTION. NOTE: WHEN REMOVING COASTING VALVE ASSY. (2), REMOVE ONLY 3 LONGEST SCREWS (1). REMOVE STAKING FROM BOWL COVER FOR EASY REMOVAL OF POWER PISTON ASSY. (36). NOTE SIZES OF JETS AND THEIR LOCATION FOR PROPER ASSEMBLY (RECORD SIZES BELOW). ALSO NOTE LOCATION OF HOLLOW THROTTLE BODY SCREW (82).

NOMENCLATURE

| REF. NO. | REF. NO. |
|--|---|
| 1. SCREW & LOCKWASHER (3) - COASTING VALVE | 43. SCREW (3) - WINDOW CLAMP |
| 2. COASTING VALVE ASSY. (B.C.D.D.) | 44. CLAMP - WINDOW |
| 3. GASKET - COASTING VALVE | 45. GASKET - WINDOW CLAMP |
| 4. SCREW & LOCKWASHER (3) - CHOKE COVER RETAINER | 46. WINDOW - FUEL BOWL |
| 5. RETAINER - CHOKE COVER | 47. GASKET - BOWL WINDOW |
| 6. CHOKE COVER ASSY.-ELECTRIC | 48. SLEEVE - FLOAT RETAINER |
| 7. E CLIP - SEC. DIAPHRAGM LINK | 49. FLOAT ASSY. |
| 8. SCREW & LOCKWASHER-CAM STOP | 50. NEEDLE & SEAT ASSY. |
| 9. STOP - CAM | 51. GASKET (SERVICE) - NEEDLE SEAT |
| 10. SCREW & LOCKWASHER (2) - SEC. DIAPH. | 52. SCREW & LOCKWASHER (2) - PUMP PLATE |
| 11. SECONDARY DIAPHRAGM ASSY. | 53. BOOT - PUMP |
| 12. GASKET-SECONDARY DIAPHRAGM ASSY. | 54. PLATE - PUMP |
| 13. SPRING - THROTTLE RETURN | 55. GASKET - PUMP PLATE |
| 14. COTTER PIN - PUMP LEVER | 56. PUMP ASSY. |
| 15. E CLIP - PUMP LEVER | 57. SPRING - PUMP RETURN |
| 16. LEVER - PUMP | 58. BALL - PUMP INTAKE CHECK |
| 17. SPRING - PUMP LEVER | 59. POWER VALVE ASSY. |
| 18. SOLENOID VALVE - ANTI-DIESELING | 60. GASKET - POWER VALVE |
| 19. GASKET - ANTI-DIESELING SOLENOID VALVE | 61. PLUG - PRI. SLOW JET |
| 20. SPRING - SEC. LEVER RETURN | 62. JET - PRIMARY SLOW |
| 21. VAC. HOSE - CHOKE VAC. BREAK | 63. PLUG - PUMP DISC. CHECK |
| 22. SCREW & LOCKWASHER - CHOKE HOUSING | 64. GASKET - PLUG |
| 23. SCREW & LOCKWASHER - CHOKE HOUSING | 65. SPRING - PUMP DISC. BALL |
| 24. COTTER PIN - VAC BREAK LINK | 66. WEIGHT - PUMP DISC. BALL |
| 25. WASHER - VAC BREAK LINK | 67. BALL - PUMP DISC. CHECK |
| 26. VACUUM BREAK ASSY. | 68. JET - PRI. MAIN AIR BLEED |
| 27. COTTER PIN - FAST IDLE ROD | 69. JET - SEC. MAIN AIR BLEED |
| 28. WASHER (2) - FAST IDLE ROD | 70. PLUG - SEC. SLOW JET |
| 29. SCREW & WASHERS-LOCK LEVER | 71. JET - SEC. SLOW |
| 30. LEVER - LOCK | 72. JET - SEC. SLOW AIR BLEED |
| 31. BRACKET - FUEL NIPPLE | 73. JET - COASTING |
| 32. SCREW & LOCKWASHER (3) - AIR HORN | 74. PLUG - PRI. MAIN JET |
| 33. AIR HORN ASSY. | 75. GASKET - PLUG |
| 34. JET - RICHER | 76. JET - PRIMARY MAIN |
| 35. JET - COASTING AIR BLEED | 77. PLUG - SEC. MAIN JET |
| 36. POWER PISTON ASSY. | 78. GASKET - PLUG |
| 37. GASKET - AIR HORN | 79. JET - SECONDARY MAIN |
| 38. BOLT - FUEL INLET NIPPLE | 80. SCREW & LOCKWASHER - THROTTLE BODY |
| 39. GASKET-FUEL NIPPLE (UPPER) | 81. SCREW & LOCKWASHER (2) - THROTTLE BODY |
| 40. NIPPLE - FUEL INLET | 82. SCREW & LOCKWASHER (1) HOLLOW - THROTTLE BODY |
| 41. SCREEN - FUEL INLET | 83. BOWL ASSY. |
| 42. GASKET-FUEL NIPPLE (LOWER) | 84. GASKET - THROTTLE BODY |
| | 85. NEEDLE - IDLE ADJUSTING |
| | 86. SPRING - IDLE ADJ. NEEDLE |
| | 87. THROTTLE BODY ASSY. |

CLEANING

CLEANING MUST BE DONE WITH CARBURETOR DISASSEMBLED. SOAK PARTS LONG ENOUGH TO SOFTEN AND REMOVE ALL FOREIGN MATERIAL. USE A CARBURETOR CLEANING SOLVENT. MAKE CERTAIN THE THROTTLE BODY IS FREE OF ALL CARBON DEPOSITS. WASH OFF IN A SUITABLE SOLVENT. BLOW OUT ALL PASSAGES IN CASTINGS WITH COMPRESSED AIR AND CHECK CAREFULLY TO INSURE THOROUGH CLEANING OF OBSCURE AREAS. CAUTION: DO NOT SOAK CHOKE COVER (6); DIAPHRAGM ASSEMBLIES (2), (11), (26); SOLENOID (18); FLOAT (49); OR PARTS MADE OF RUBBER IN ANY TYPE OF CLEANING SOLVENT.

REASSEMBLY

REASSEMBLE IN REVERSE ORDER OF DISASSEMBLY. NOTE SPECIAL INSTRUCTIONS AND ADJUSTMENTS.

SPECIAL INSTRUCTIONS

IDLE ADJUSTING NEEDLE (85) - TURN NEEDLE IN UNTIL LIGHTLY SEATED, THEN BACK OUT 2 TO 2 1/2 TURNS.

PUMP RETURN SPRING (57) - INSTALL WITH CROSS WIRE IN SLOT AT BOTTOM OF PUMP CYLINDER.

PUMP PLUNGER (56) - REMOVE PAPER SLEEVE FROM LEATHER CUP IF USED. FLEX LEATHER OUTWARD SLIGHTLY. SOAK CUP IN LIGHT OIL A FEW MINUTES PRIOR TO PLACING IN CARBURETOR.

NEEDLE & SEAT (50) - INSTALL GASKET (51) ON SERVICE NEEDLE & SEAT.

WINDOW CLAMP SCREWS (43) - TIGHTEN SCREWS DOWN EVENLY. DON'T OVERTIGHTEN.

POWER PISTON (36) - AFTER INSTALLATION, LIGHTLY RESTAKE CASTING AROUND WASHER.

SEC. LEVER RETURN SPRING (20) - INSTALL WITH LONG HOOK TO THE BOTTOM AND HOOKS FACING OUT.

ADJUSTMENTS

