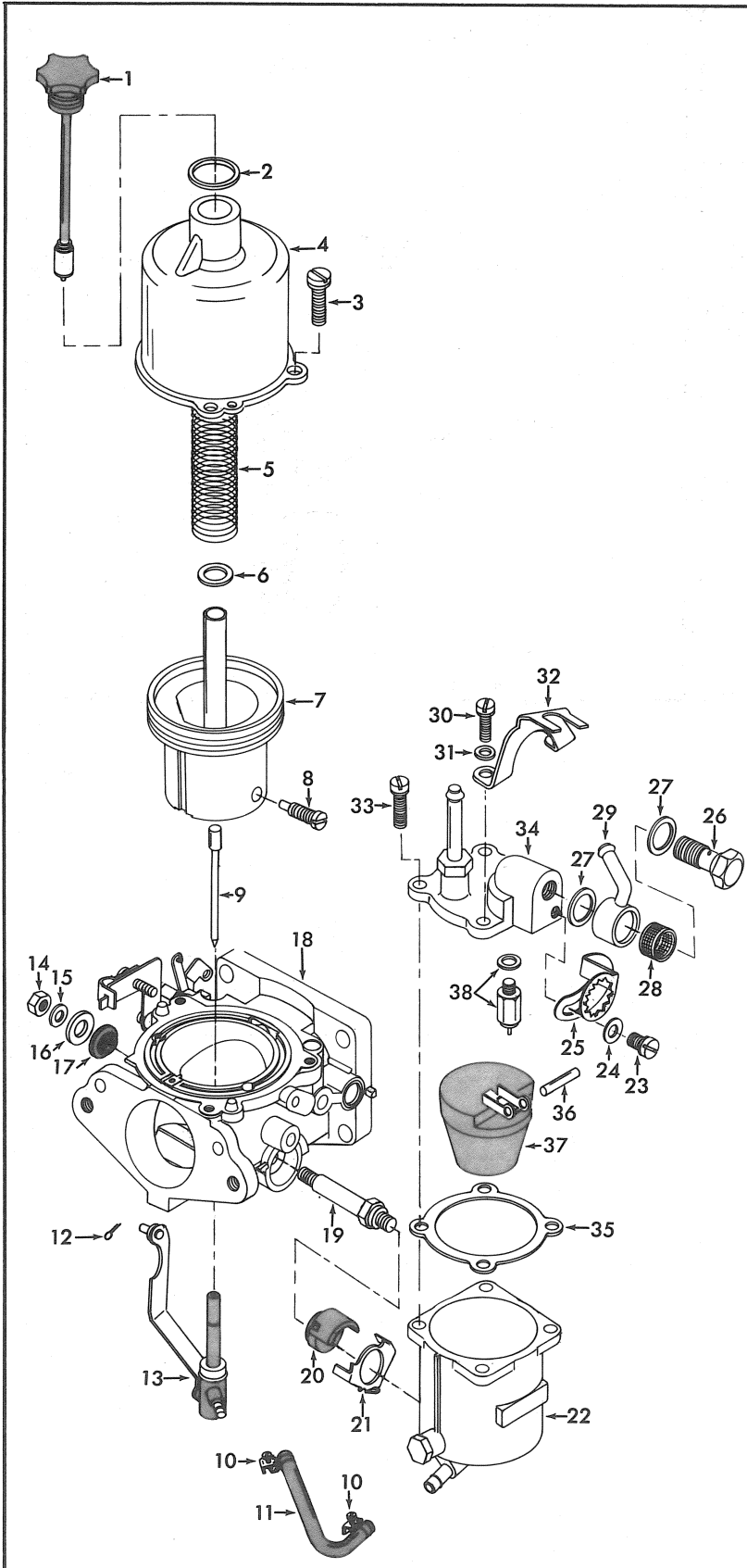


INSTRUCTION SHEET

HITACHI S. U. CARBURETOR - MODEL HJG46W (DUAL CARBURETORS)

GENERAL EXPLODED VIEW

THE GENERAL DESIGN AND PARTS SHOWN WILL VARY TO
INDIVIDUAL UNITS COVERED ON THIS INSTRUCTION SHEET.



DISASSEMBLY

USE EXPLODED VIEW AS A GUIDE. ALWAYS DISASSEMBLE CARBURETORS INDIVIDUALLY AS PARTS SHOULD NOT BE INTERCHANGED. THE NUMERICAL SEQUENCE MAY GENERALLY BE FOLLOWED TO DISASSEMBLE UNIT FAR ENOUGH TO PERMIT CLEANING AND INSPECTION. CAUTION: SUCTION CHAMBER AND PISTON ASSY. ARE PRECISION MADE AND MUST NOT BE TREATED ROUGHLY. DO NOT DISASSEMBLE NOZZLE (13). RUBBER GROMMETS (17)(20) MUST BE REMOVED BEFORE SOAKING IN CARBURETOR CLEANER.

NOMENCLATURE

REF. NO.	REF. NO.
1. OIL CAP NUT ASSY.	20. ADAPTER (RUBBER) - BOWL STUD
2. GASKET - OIL CAP NUT	21. WASHER - FUEL BOWL SUPPORT
3. SCREW & LOCKWASHER (3) - SUCTION CHAMBER	22. FLOAT BOWL & COVER ASSY.
4. CHAMBER - SUCTION	23. SCREW & LOCKWASHER - BOLT CLAMP
5. SPRING - SUCTION CHAMBER PISTON	24. WASHER (FLAT) - BOLT CLAMP SCREW
7. PISTON - SUCTION	25. CLAMP - BOLT
8. SCREW - NEEDLE JET LOCK	26. BOLT - FILTER NIPPLE
9. NEEDLE - JET	27. GASKET (2) - BOLT
10. CLAMP (2) - FUEL PIPE	28. SCREEN - FILTER
11. PIPE - FUEL	29. NIPPLE - FUEL
12. COTTER PIN - CONNECTING PLATE	30. SCREW & LOCKWASHER (2) - NIPPLE BRACKET
13. NOZZLE & CONNECTING PLATE ASSY.	31. WASHER (2) FLAT - BRACKET SCREW
14. NUT - BOWL STUD	32. BRACKET - NIPPLE
15. LOCKWASHER - BOWL STUD	33. SCREW & LOCKWASHER (2) - BOWL COVER
16. FLAT WASHER - BOWL STUD	34. BOWL COVER ASSY.
17. ADAPTER (RUBBER) - BOWL STUD	35. GASKET - BOWL COVER
18. THROTTLE BODY ASSY.	36. PIN - FLOAT
19. BOLT - FUEL BOWL ATTACHING	37. FLOAT & LEVER ASSY.
	38. NEEDLE, SEAT & GASKET ASSY.

CLEANING

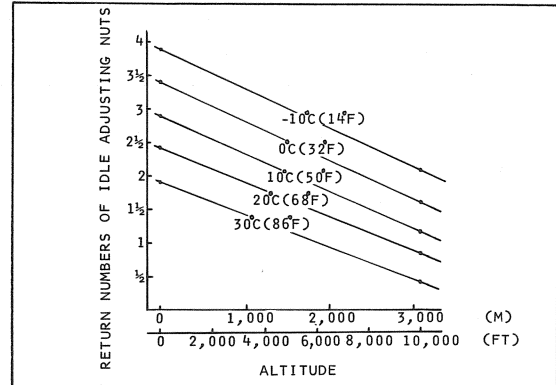
CLEANING MUST BE DONE WITH CARBURETOR COMPLETELY DISASSEMBLED. SOAK PARTS LONG ENOUGH TO SOFTEN AND REMOVE ALL FOREIGN MATERIAL. USE A CARBURETOR CLEANING SOLVENT. MAKE CERTAIN THE THROTTLE BORE IS FREE OF ALL CARBON AND VARNISH DEPOSITS. RINSE OFF IN SUITABLE SOLVENT. BLOW OUT ALL PASSAGES IN CASTINGS WITH COMPRESSED AIR AND CHECK CAREFULLY TO INSURE THOROUGH CLEANING OF OBSCURE AREAS. CAUTION: DO NOT SOAK PARTS CONTAINING RUBBER OR PLASTIC MATERIALS.

REASSEMBLY

REASSEMBLE IN REVERSE ORDER OF DISASSEMBLY. NOTE SPECIAL INSTRUCTIONS AND FOLLOW NUMERICAL OUTLINE IN MAKING ADJUSTMENTS.

SPECIAL INSTRUCTIONS

BEFORE INSTALLING NOZZLE (13) - MAKE INITIAL IDLE ADJUSTMENT. TURN IDLE ADJUSTING NUT IN UNTIL IT SEATS, THEN BACK OUT NUMBER OF TURNS ARRIVED FROM CHART. (2 1/2 TURNS GENERAL SETTING)



PISTON ASSY. (7) - LUBRICATE PISTON ROD LIGHTLY BEFORE INSTALLING. (LUBRICATE NO OTHER PART OF PISTON.)

ADJUSTMENTS

CAUTION: DO NOT EXERT PRESSURE ON RESILIENT NEEDLE.

① BOWL COVER INVERTED. LIFT UP THE FLOAT AND THEN SLOWLY LOWER UNTIL FLOAT LEVER SEAT JUST CONTACTS THE VALVE STEM.

② MEASURE DISTANCE BETWEEN BOWL COVER AND FLOAT AT TOE END

③ TO ADJUST BEND FLOAT LEVER SEAT

1970-71 FRT. & REAR 13/32" 10.31 MM.
1972 FRT. & REAR 9/16" 14.28 MM.

FLOAT LEVEL SETTING FIG. 1

INSTALL NEEDLE WITH SHOULDER OF NEEDLE FLUSH WITH FLAT SURFACE OF SUCTION PISTON. TIGHTEN SET SCREW. (DO NOT OVERTIGHTEN)

METERING NEEDLE POSITION FIG. 2

③ MEASURE DISTANCE BETWEEN THROTTLE VALVE AND BORE OF CARBURETOR .025" .63 MM.

④ TO ADJUST BEND CONNECTING ROD

② CHOKE LEVER HELD IN THE FULL CHOKE POSITION.

① THROTTLE VALVE HELD COMPLETELY CLOSED.

COLD STARTING DEVICE ADJUSTMENT FIG. 3

FILL WITH SUITABLE OIL TO TOP GROOVE IN PLUNGER ROD (SAE 20W)

HYDRAULIC DAMPER (OIL LEVEL) FIG. 4