

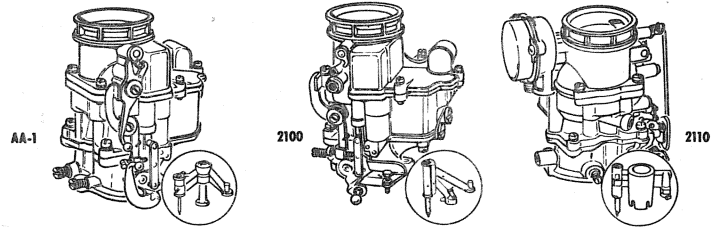
# INSTRUCTION SHEET

IS-50-459

## HOLLEY CARBURETOR MODELS AA-1, 2100 AND 2110

### GENERAL EXPLODED VIEW

THE GENERAL DESIGN AND PARTS SHOWN WILL VARY TO INDIVIDUAL UNITS COVERED ON THIS INSTRUCTION SHEET



### DISASSEMBLY

USE EXPLODED VIEW AS A GUIDE. THE NUMERICAL SEQUENCE MAY BE FOLLOWED TO DISASSEMBLE UNIT FAR ENOUGH TO PERMIT CLEANING AND INSPECTION.

### NOMENCLATURE

| REF. NO.                        | REF. NO.                              |
|---------------------------------|---------------------------------------|
| 1. SCREW-CHOKE LEVER            | 36. NOZZLE AIR BLEED PLUG(2)          |
| 2. WASHER-SCREW CHOKE LEVER     | 37. GASKET(2)-NOZZLE AIR BLEED PLUG   |
| 3. LEVER-CHOKE                  | 38. SCREW(4)-NOZZLE BAR CLAMP         |
| 4. PLUNGER-CHOKE LEVER          | 39. NOZZLE BAR CLAMP(2)               |
| 5. SPRING-CHOKE LEVER PLUNGER   | 40. PUMP DISCHARGE NOZZLE             |
| 6. RETAINER(2)-FAST IDLE ROD    | 41. GASKET-PUMP NOZZLE                |
| 7. WASHER                       | 42. NEEDLE-PUMP DISCHARGE             |
| 8. ROD-FAST IDLE                | 43. IDLE TUBE(2)                      |
| 9. SCREW(3)-STAT COVER RETAINER | 44. NOZZLE BAR RH                     |
| 10. RETAINER-STAT COVER         | 45. NOZZLE BAR LH                     |
| 11. STAT COVER                  | 46. GASKET(4)-NOZZLE BAR              |
| 12. GASKET-STAT COVER           | 47. SCREW & LOCKWASHER T/B TO BOWL(2) |
| 13. PLATE-CHOKE BAFFLE          | 48. SCREW & LOCKWASHER T/B TO BOWL(1) |
| 14. GASKET-CHOKE HOUSING        | 49. BRACKET-CHOKE CONTROL             |
| 15. FITTING-FUEL INLET          | 50. BOWL ASSY.-FLOAT                  |
| 16. GASKET-FUEL INLET FITTING   | 51. PLUG(2)-MAIN JET                  |
| 17. SCREW(5)-BOWL COVER         | 52. GASKET(2)-MAIN JET PLUG           |
| 18. BOWL COVER ASSY.            | 53. JET(2)-MAIN                       |
| 19. GASKET-BOWL COVER           | 54. ECONOMIZER VALVE ASSY.            |
| 20. PIN-FLOAT HINGE             | 55. GASKET-ECONOMIZER VALVE           |
| 21. FLOAT & LEVER ASSY.         | 56. RETAINER-PUMP ROD FELT            |
| 22. NEEDLE, SEAT & GASKET ASSY. | 57. FELT-PUMP ROD                     |
| 23. BRACKET-DASHPOT             | 58. GASKET-BODY FLANGE                |
| 24. NUT-DASHPOT                 | 59. SPARK VALVE                       |
| 25. LOCKWASHER(2)-DASHPOT       | 60. GASKET-SPARK VALVE                |
| 26. DASHPOT ASSY.               | 61. NEEDLE(2)-IDLE ADJ.               |
| 27. RETAINER-PUMP LINK          | 62. SPRING(2)-IDLE ADJ. NEEDLE        |
| 28. LINK-PUMP                   | 63. RETAINER-FAST IDLE CAM            |
| 29. STUD-PUMP LINK              | 64. CAM-FAST IDLE                     |
| 30. ROD-PUMP OPERATING          | 65. THROTTLE BODY ASSY.               |
| 31. RETAINER-PUMP SPRING        | 66. GASKET-FLANGE                     |
| 32. SPRING-PUMP                 | 67. SPRING-PUMP RETURN                |
| 33. PUMP PLUNGER                |                                       |
| 34. RETAINER-INLET CHECK BALL   |                                       |
| 35. BALL-INLET CHECK            |                                       |

### CLEANING

CLEANING MUST BE DONE WITH CARBURETOR DISASSEMBLED. SOAK PARTS LONG ENOUGH TO SOFTEN AND REMOVE ALL FOREIGN MATERIAL. USE (1) A CARBURETOR CLEANING SOLVENT, (2) LACQUER THINNER OR (3) DENATURED ALCOHOL. MAKE CERTAIN THE THROTTLE BODY IS FREE OF ALL HARD CARBON DEPOSITS. WASH OFF IN SUITABLE SOLVENT. BLOW OUT ALL PASSAGES IN CASTINGS WITH COMPRESSED AIR AND CHECK CAREFULLY TO INSURE THOROUGH CLEANING OF OBSCURE AREAS.

CAUTION: DO NOT SOAK ANY PARTS CONTAINING RUBBER, LEATHER OR PLASTIC IN CLEANING SOLVENT.

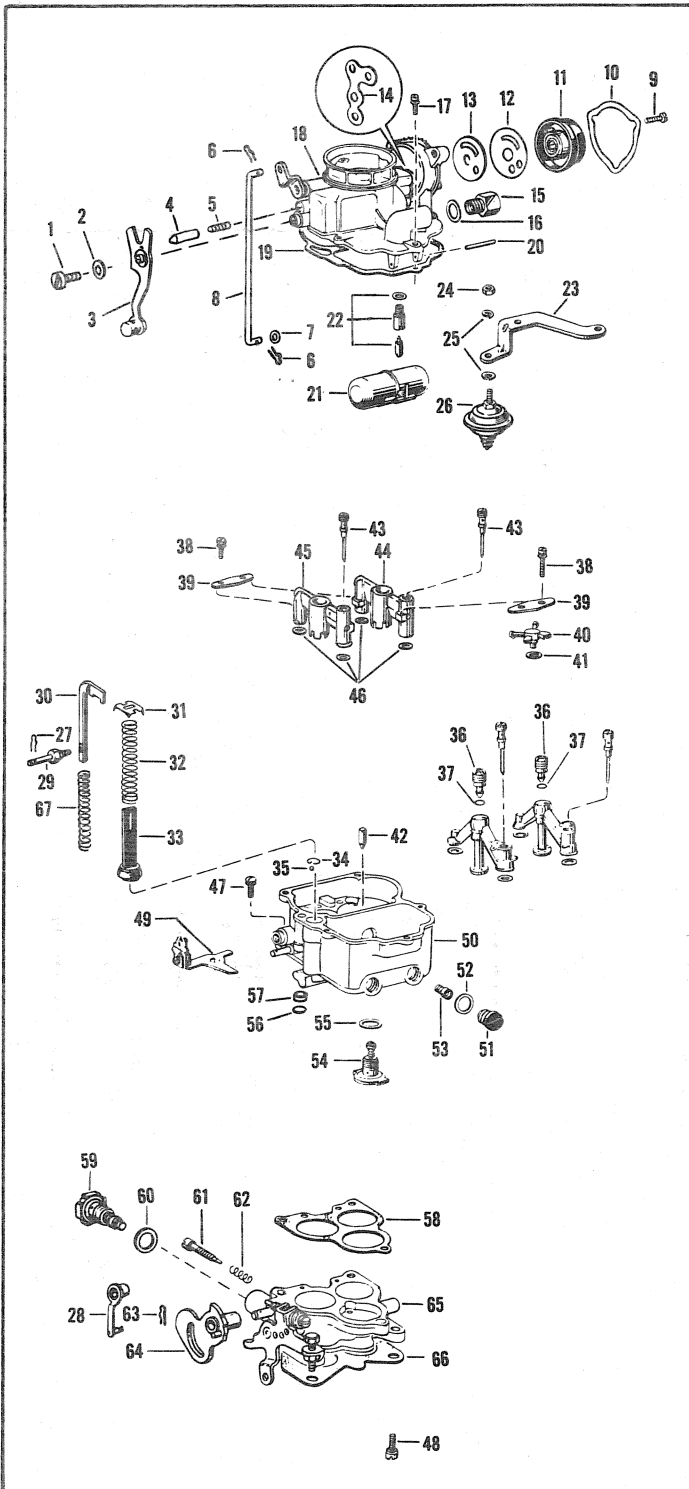
### REASSEMBLY

REASSEMBLE IN REVERSE ORDER OF DISASSEMBLY. NOTE SPECIAL INSTRUCTIONS AND FOLLOW NUMERICAL OUTLINE IN MAKING ADJUSTMENTS. SEE OTHER SIDE.

### SPECIAL INSTRUCTIONS

WHEN INSTALLING IDLE MIXTURE ADJUSTING NEEDLES(61), LIGHTLY BOTTOM THEN BACK OUT 1 1/2 TURNS.

ECONOMIZER VALVE (54). USE CARE WHEN TIGHTENING.



# ADJUSTMENT DATA

MODELS AA-1, 2100  
FLOAT SETTING 1 11/32"

MODEL 2110  
FLOAT SETTING 1 15/32"

MODEL 2110 I.H.C. TRUCK  
FLOAT SETTING 1 5/16"

① MEASURE FROM MACHINED SURFACE OF BOWL COVER TO TOP OF FLOAT. (CHECK BOTH SIDES.)

② TO ADJUST BEND TANG

CAUTION  
DO NOT EXERT PRESSURE ON RESILIENT NEEDLE VALVE.

FLOAT LEVEL ADJUSTMENT

Fig. 1

MODELS AA-1, 2100  
FLOAT DROP 1 7/16"

MODEL 2110  
FLOAT DROP 1 3/4"

① WITH FLOAT HANGING FREELY, MEASURE FROM MACHINED SURFACE OF BOWL COVER TO BOTTOM OF FLOAT.

② TO ADJUST BEND TANG

FLOAT DROP ADJUSTMENT

Fig. 2

LEANER SETTING

RICHER SETTING

STANDARD SETTING

PUMP LINK SETTING

Fig. 3

ROTATE STAT COVER AGAINST SPRING TENSION. SET MARK ON COVER TO CENTER MARK ON HOUSING.

ALLOWABLE VARIATIONS  
2 NOTCHES EITHER WAY FROM INITIAL SETTING

AUTOMATIC CHOKE SETTING

Fig. 4

ENGINE AT OPERATING TEMP. CHOKE FULLY OPEN. ADJUST IDLE MIXTURE SCREWS FOR A SMOOTH IDLE AND ADJUST IDLE STOP SCREW FOR 450 TO 500 R.P.M.

IDLE MIXTURE SCREWS

IDLE STOP SCREW

IDLE ADJUSTMENT

Fig. 5

② DEPRESS PLUNGER STEM AND MEASURE DISTANCE BETWEEN END OF STEM AND DASHPOT ADJUSTING SCREW. CLEARANCE SHOULD BE 1/16".

③ TO ADJUST LOOSEN LOCKNUT AND TURN DASHPOT ADJUSTING SCREW. TIGHTEN LOCK NUT.

① ADJUST SLOW IDLE

DASHPOT ADJUSTMENT

Fig. 6