

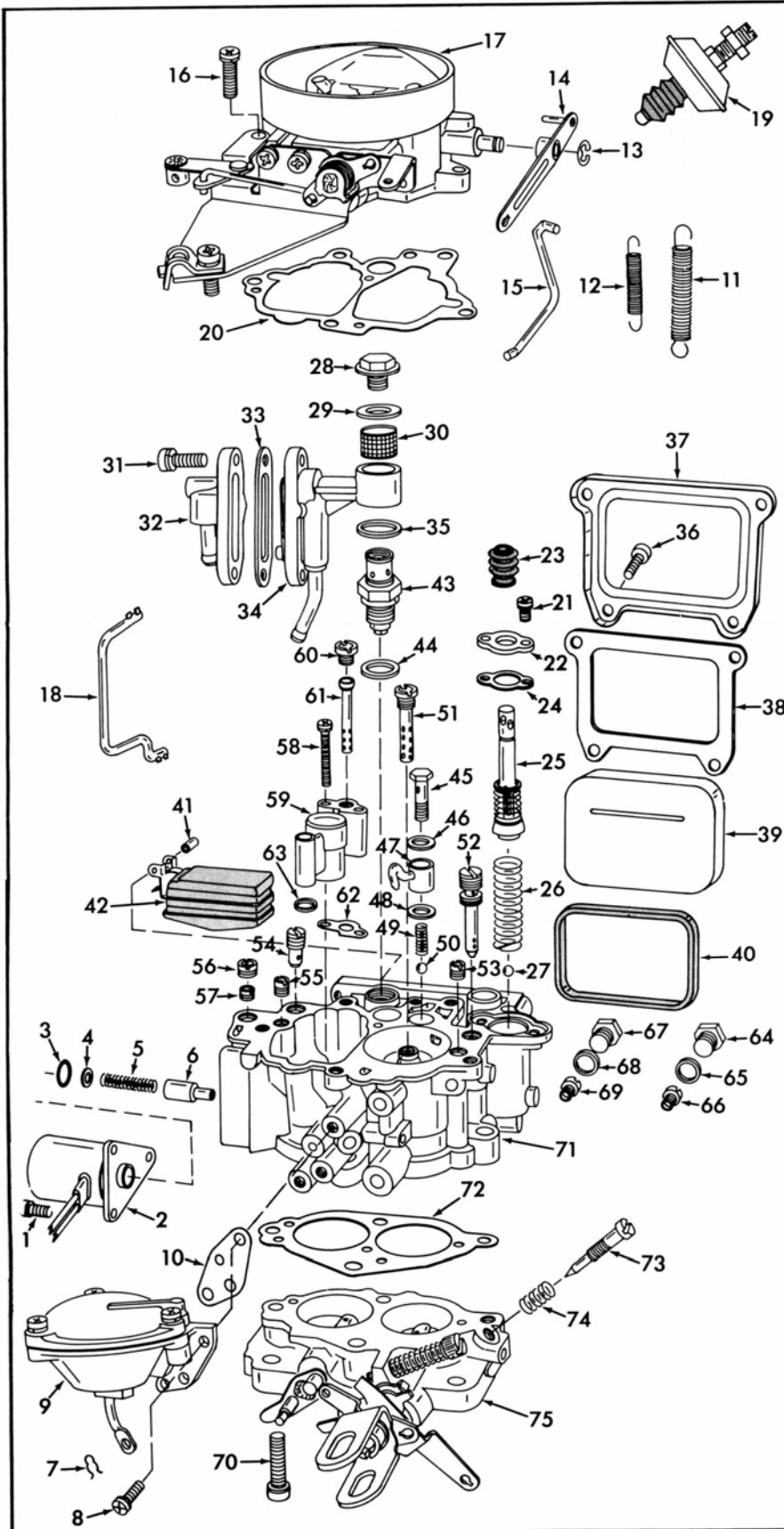
# INSTRUCTION SHEET

## HITACHI CARBURETOR—MODEL 328

50-429-1

### GENERAL EXPLODED VIEW

THE GENERAL DESIGN AND PARTS SHOWN WILL VARY TO INDIVIDUAL UNITS COVERED ON THIS INSTRUCTION SHEET.



### DISASSEMBLY

USE EXPLODED VIEW AS A GUIDE. THE NUMERICAL SEQUENCE MAY GENERALLY BE FOLLOWED TO DISASSEMBLE UNIT FAR ENOUGH TO PERMIT CLEANING AND INSPECTION. **SPECIAL NOTES:** (THE FOLLOWING UNITS NOT SHOWN ON EXPLODED VIEW.) DIAPHRAGM TYPE IDLE EMISSION CONTROL UNIT CAN BE REMOVED AS AN ASSEMBLY BY REMOVING THE 3 LONGEST SCREWS ONLY, (GOLD COLOR.) VACUUM BREAK CAN BE REMOVED BY REMOVING MOUNTING SCREWS AND LINK ATTACHED TO DIAPHRAGM SHAFT. REMOVE STAKING FROM AIR HORN FOR EASY REMOVAL OF POWER PISTON ASSEMBLY. **BE CAREFUL** TO NOTE SIZES OF JETS AND THEIR LOCATION FOR PROPER ASSEMBLY. (RECORD SIZES BELOW) ALSO NOTE LOCATION OF THROTTLE BODY SCREWS (70) THAT ARE HOLLOW.

### NOMENCLATURE

REF. NO.	REF. NO.
1. SCREW & LOCKWASHER (3)- SOLENOID	38. GASKET- WINDOW CLAMP
2. SOLENOID	39. WINDOW- FUEL BOWL
3. O-RING- SOLENOID	40. GASKET- BOWL WINDOW
4. WASHER- SHIM	41. SLEEVE- FLOAT RETAINER
5. SPRING- PLUNGER	42. FLOAT ASSEMBLY
6. PLUNGER- SOLENOID	43. NEEDLE & SEAT ASSEMBLY
7. RETAINER- SECONDARY DIAPHRAGM LINK	44. GASKET (SERVICE)- NEEDLE SEAT
8. SCREW & LOCKWASHER (3)- SEC. DIAPHRAGM ASSY.	45. BOLT- PUMP NOZZLE
9. SEC. DIAPHRAGM ASSY.	46. GASKET (UPPER)- PUMP NOZZLE
10. GASKET- SEC. DIAPHRAGM ASSY.	47. NOZZLE- PUMP DISCHARGE
11. SPRING (LARGE)- PRIMARY THROTTLE RETURN	48. GASKET (LOWER)- PUMP NOZZLE
12. SPRING (SMALL)- SEC. THROTTLE RETURN	49. SPRING- PUMP DISCHARGE BALL
13. RETAINER- PUMP LEVER	50. BALL- PUMP DISCHARGE CHECK
14. LEVER- PUMP	51. TUBE- PRIMARY MAIN AIR BLEED
15. ROD- PUMP	52. JET- PRIMARY SLOW
16. SCREW & LOCKWASHER (4)- AIR HORN ASSEMBLY	53. JET- PRIMARY SLOW AIR BLEED
17. AIR HORN ASSEMBLY	54. JET- SECONDARY SLOW
18. ROD- FAST IDLE	55. JET- SECONDARY SLOW AIR BLEED
19. DASHPOT ASSEMBLY	56. JET- IDLE EMISSION AIR BLEED
20. GASKET- AIR HORN	57. JET- IDLE EMISSION
21. SCREW & LOCKWASHER (2)- PUMP RETAINER	58. SCREW & LOCKWASHER (3)- SECONDARY VENTURI
22. RETAINER- PUMP	59. VENTURI- SECONDARY
23. BOOT- PUMP	60. JET- SECONDARY MAIN AIR BLEED
24. GASKET- PUMP RETAINER	61. TUBE- SECONDARY EMULSION
25. PUMP ASSEMBLY	62. GASKET- SECONDARY VENTURI
26. SPRING- PUMP RETURN	63. GASKET- SECONDARY VENTURI
27. BALL- PUMP INTAKE CHECK	64. PLUG- PRIMARY MAIN JET
28. BOLT- FUEL INLET BANJO	65. GASKET-PRIMARY PLUG
29. WASHER- UPPER BANJO	66. JET- PRIMARY MAIN
30. SCREEN- FUEL INLET	67. PLUG- SECONDARY MAIN JET
31. SCREW & LOCKWASHER (2)- PRESSURE REG.	68. GASKET- SECONDARY PLUG
32. COVER- PRESSURE REG.	69. JET- SECONDARY MAIN
33. GASKET- PRESSURE REG. COVER	70. SCREW & LOCKWASHER (4)- THROTTLE BODY
34. VALVE ASSY.- PRESSURE REG.	71. BOWL ASSEMBLY- FLOAT
35. WASHER- LOWER BANJO	72. GASKET- THROTTLE BODY
36. SCREW (4)- WINDOW CLAMP	73. NEEDLE- IDLE ADJUSTING
37. CLAMP- WINDOW	74. SPRING- IDLE ADJ. NEEDLE
	75. THROTTLE BODY ASSEMBLY

### CLEANING

CLEANING MUST BE DONE WITH CARBURETOR DISASSEMBLED. SOAK PARTS LONG ENOUGH TO SOFTEN AND REMOVE ALL FOREIGN MATERIAL. USE A CARBURETOR CLEANING SOLVENT. MAKE CERTAIN THE THROTTLE BODY IS FREE OF ALL CARBON DEPOSITS. WASH OFF IN SUITABLE SOLVENT. BLOW OUT ALL PASSAGES IN CASTINGS WITH COMPRESSED AIR AND CHECK CAREFULLY TO INSURE THOROUGH CLEANING OF OBSCURE AREAS. CAUTION: DO NOT SOAK CHOKE COVER OR DIAPHRAGM ASSEMBLIES OR PARTS MADE OF RUBBER OR PLASTIC IN ANY TYPE OF CLEANING SOLVENT.

### REASSEMBLY

REASSEMBLE IN REVERSE ORDER OF DISASSEMBLY. NOTE: SPECIAL INSTRUCTIONS AND ADJUSTMENTS. (SEE REVERSE SIDE)

### SPECIAL INSTRUCTIONS

IDLE ADJUSTING NEEDLE (73)- TURN NEEDLE IN UNTIL LIGHTLY SEATED THEN BACK OUT 1-3/4 TO 2 TURNS.

PUMP DISCHARGE NOZZLE (47)- ALIGN NOZZLE SO FUEL WILL BE DISCHARGED BETWEEN VENTURI AND MAIN NOZZLE.

NEEDLE AND SEAT (43)- INSTALL GASKET (44) ON SERVICE NEEDLE AND SEAT

WINDOW CLAMP SCREWS (36)- TIGHTEN SCREWS DOWN EVENLY DON'T OVERTIGHTEN.

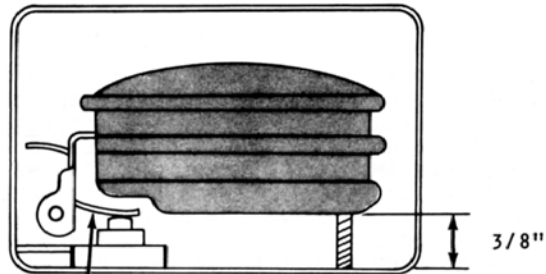
PUMP RETURN SPRING (26)- INSTALL WITH CROSS WIRE IN SLOT AT BOTTOM OF PUMP CYLINDER.

PUMP PLUNGER (25)- REMOVE PAPER SLEEVE FROM LEATHER CUP IF USED. FLEX LEATHER CUP OUTWARD SLIGHTLY. SOAK CUP IN LIGHT OIL A FEW MINUTES PRIOR TO PLACING IN CARBURETOR.

PUMP BOOT (23)- INSTALL SO TOP OF BOOT ENGAGES IN GROOVE

# ADJUSTMENTS

- ① FLOAT BOWL INVERTED, MEASURE DISTANCE BETWEEN FLOAT AT TOE END AND CASTING SURFACE. CAUTION: DO NOT PLACE GAUGE UNDER SEAM IN CENTER OF FLOAT.



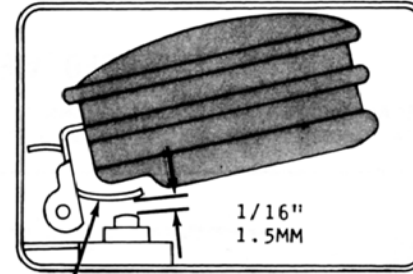
- ② TO ADJUST BEND TANG

CAUTION: DO NOT EXERT PRESSURE ON RESILIENT NEEDLE VALVE.

SOLID NEEDLE  
DRY FLOAT LEVEL ADJUSTMENT

FIG. 1.

- ① FLAOT BOWL INVERTED, LIFT FLOAT FULLY UP. MEASURE DISTANCE BETWEEN FLOAT TANG AND NEEDLE VALVE STEM. (DO NOT COMPRESS STEM INTO NEEDLE.)



- ② TO ADJUST BEND TANG

CAUTION: DO NOT EXERT PRESSURE ON RESILIENT NEEDLE VALVE.

SPRING LOADED NEEDLE  
DRY FLOAT LEVEL ADJUSTMENT

FIG. 2.