

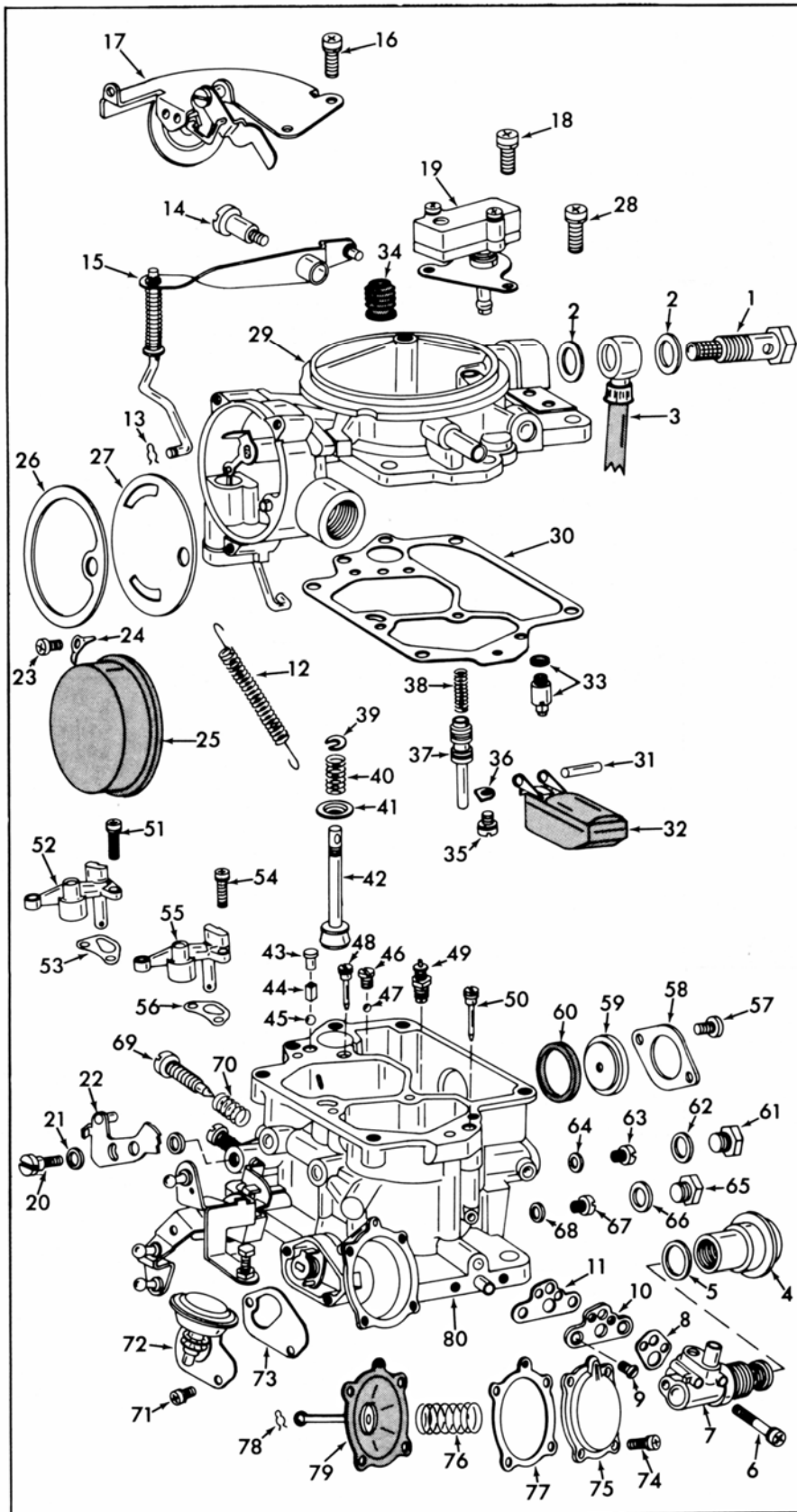
INSTRUCTION SHEET

AISAN CARBURETOR

50-425-1

GENERAL EXPLODED VIEW

THE GENERAL DESIGN AND PARTS SHOWN WILL VARY TO INDIVIDUAL UNITS COVERED ON THIS INSTRUCTION SHEET.



DISASSEMBLY

USE EXPLODED VIEW AS A GUIDE. THE NUMERICAL SEQUENCE MAY GENERALLY BE FOLLOWED TO DISASSEMBLE UNIT FAR ENOUGH TO PERMIT CLEANING AND INSPECTION. **NOTE:** IF FOUND NECESSARY TO REPLACE THE FOLLOWING GASKETS, NOT SHOWN ON EXPLODED VIEW, (SUPPLIED IN KIT). (1) CHOKE HOUSING TO BOWL COVER GASKET. IF CHOKE HOUSING IS REMOVABLE BE SURE TO FILE OFF PEENED END OF CHOKE VALVE SCREWS BEFORE REMOVING. (2) SECONDARY DIAPHRAGM HOUSING TO CARBURETOR BODY GASKET CAN BE REMOVED BY REMOVING MOUNTING SCREWS SLITTING GASKET THRU TO THROTTLE SHAFT HOLE & PULL OUT. SLIT NEW GASKET TO REINSTALL.

NOMENCLATURE

REF. NO.	REF. NO.
1. STRAINER ASSY.	41. WASHER - PUMP SPRING
2. GASKET (2)-STRAINER	42. PUMP PLUNGER ASSY.
3. FUEL HOSE	43. STOPPER - DISC. BALL
4. COVER-A.S.S. VALVE	44. WEIGHT - DISC. BALL
5. GASKET-COVER	45. BALL - PUMP DISC. (LARGE)
6. SCREW & LOCKWASHER (2)-A.S.S. VALVE	46. PLUG - INTAKE BALL
7. A.S.S. VALVE ASSY.	47. BALL - PUMP INTAKE (SMALL)
8. GASKET-A.S.S. VALVE	48. JET - PRIMARY IDLE (SOME MODELS)
9. SCREW (2) - ADAPTOR	49. POWER VALVE ASSY.
10. ADAPTOR-A.S.S. VALVE	50. JET - SECONDARY IDLE
11. GASKET - ADAPTOR	51. SCREW & LOCKWASHER (2-3)-PRIMARY VENTURI
12. SPRING - THROTTLE RETURN	52. VENTURI - PRIMARY
13. RETAINER - PUMP ROD	53. GASKET - PRIMARY VENTURI
14. SCREW - PUMP LEVER	54. SCREW & LOCKWASHER (2-3)-SECONDARY VENTURI
15. LEVER & ROD ASSY.-PUMP	55. VENTURI - SECONDARY
16. SCREW & LOCKWASHER (2)-VAC. BREAK ASSY.	56. GASKET - SECONDARY VENTURI
17. VAC. BREAK ASSY.	57. SCREW (2)-WINDOW RETAINER
18. SCREW & LOCKWASHER (2)-IDLE COMP. VALVE	58. RETAINER - WINDOW
19. IDLE COMP. VALVE ASSY.	59. WINDOW - FUEL BOWL
20. SCREW - FAST IDLE CAM	60. GASKET - WINDOW
21. SPACER - FAST IDLE CAM	61. PLUG - PRIMARY MAIN JET
22. CAM - FAST IDLE	62. GASKET - PLUG
23. SCREW (3)-CHOKE COVER	63. JET - PRIMARY MAIN (BRASS)
24. RETAINER (3)-CHOKE COVER	64. GASKET - PRIMARY JET
25. CHOKE COVER ASSY.	65. PLUG - SECONDARY MAIN JET
26. GASKET - CHOKE COVER	66. GASKET - PLUG
27. PLATE - CHOKE BAFFLE	67. JET - SECONDARY MAIN (CROME)
28. SCREW & LOCKWASHER (3)-BOWL COVER	68. GASKET - SECONDARY JET
29. BOWL COVER ASSY.	69. NEEDLE - IDLE ADJUSTING
30. GASKET - BOWL COVER	70. SPRING - IDLE ADJUSTING NEEDLE
31. PIN - FLOAT LEVER	71. SCREW & LOCKWASHER (2)-DASHPOT
32. FLOAT & LEVER ASSY.	72. DASHPOT ASSY.
33. NEEDLE, SEAT & GASKET ASSY.	73. GASKET - DASHPOT
34. BOOT - PUMP	74. SCREW & LOCKWASHER (4)-DIAPHRAGM COVER
35. SCREW & LOCKWASHER - PISTON RETAINER	75. COVER - SECONDARY DIAPHRAGM
36. RETAINER - PISTON	76. SPRING - SECONDARY DIAPHRAGM
37. PISTON - POWER	77. GASKET - DIAPHRAGM
38. SPRING - POWER PISTON	78. RETAINER - DIAPHRAGM ROD
39. E CLIP - PUMP STEM	79. DIAPHRAGM ASSEMBLY
40. SPRING - PUMP	80. THROTTLE BODY & BOWL ASSEMBLY

CLEANING

CLEANING MUST BE DONE WITH CARBURETOR DISASSEMBLED. SOAK PARTS LONG ENOUGH TO SOFTEN AND REMOVE ALL FOREIGN MATERIAL. USE (1) A CARBURETOR CLEANING SOLVENT, (2) LACQUER THINNER OR (3) DENATURED ALCOHOL. MAKE CERTAIN THE THROTTLE BODY IS FREE OF ALL CARBON DEPOSITS. WASH OFF IN SUITABLE SOLVENT. BLOW OUT ALL PASSAGES IN CASTINGS WITH COMPRESSED AIR AND CHECK CAREFULLY TO INSURE THOROUGH CLEANING OF OBSCURE AREAS. **CAUTION:** DO NOT SOAK RUBBER OR PLASTIC PARTS IN CLEANING SOLVENTS. BEING CAREFUL OF DIAPHRAGM ASSEMBLIES. (4) (17) (72) (79), FLOAT (32) AND IDLE COMPENSATOR VALVE (19) WHICH HAVE RUBBER COMPONENTS.

REASSEMBLY

REASSEMBLE IN REVERSE ORDER OF DISASSEMBLY. **NOTE:** SPECIAL INSTRUCTIONS AND ADJUSTMENTS.

SPECIAL INSTRUCTIONS

IDLE ADJUSTING NEEDLE(69)-TURN NEEDLE IN UNTIL LIGHTLY SEATED THEN BACK OUT 1 1/2 TURNS.

PUMP PLUNGER (42) - INSTALL E CLIP IN LOWER SLOT OF STEM. REMOVE PAPER SLEEVE FROM LEATHER CUP IF USED, FLEX LEATHER OUTWARD SLIGHTLY. SOAK CUP IN GASOLINE, KEROSENE OR OIL FOR A FEW MINUTES PRIOR TO PLACING IN CARBURETOR.

WINDOW (59) - INSTALL CENTER BUBBLE OF WINDOW TO THE INSIDE CHOKE COVER (25) - ROTATE CHOKE COVER AGAINST SPRING TENSION, ALIGN MARK ON COVER WITH INDEX MARK ON HOUSING.

A.S.S. VALVE (7) - BEFORE INSTALLING COVER (4) APPLY A SEALER ON THREADS NEAR GASKET SEAT.

ADJUSTMENTS

