

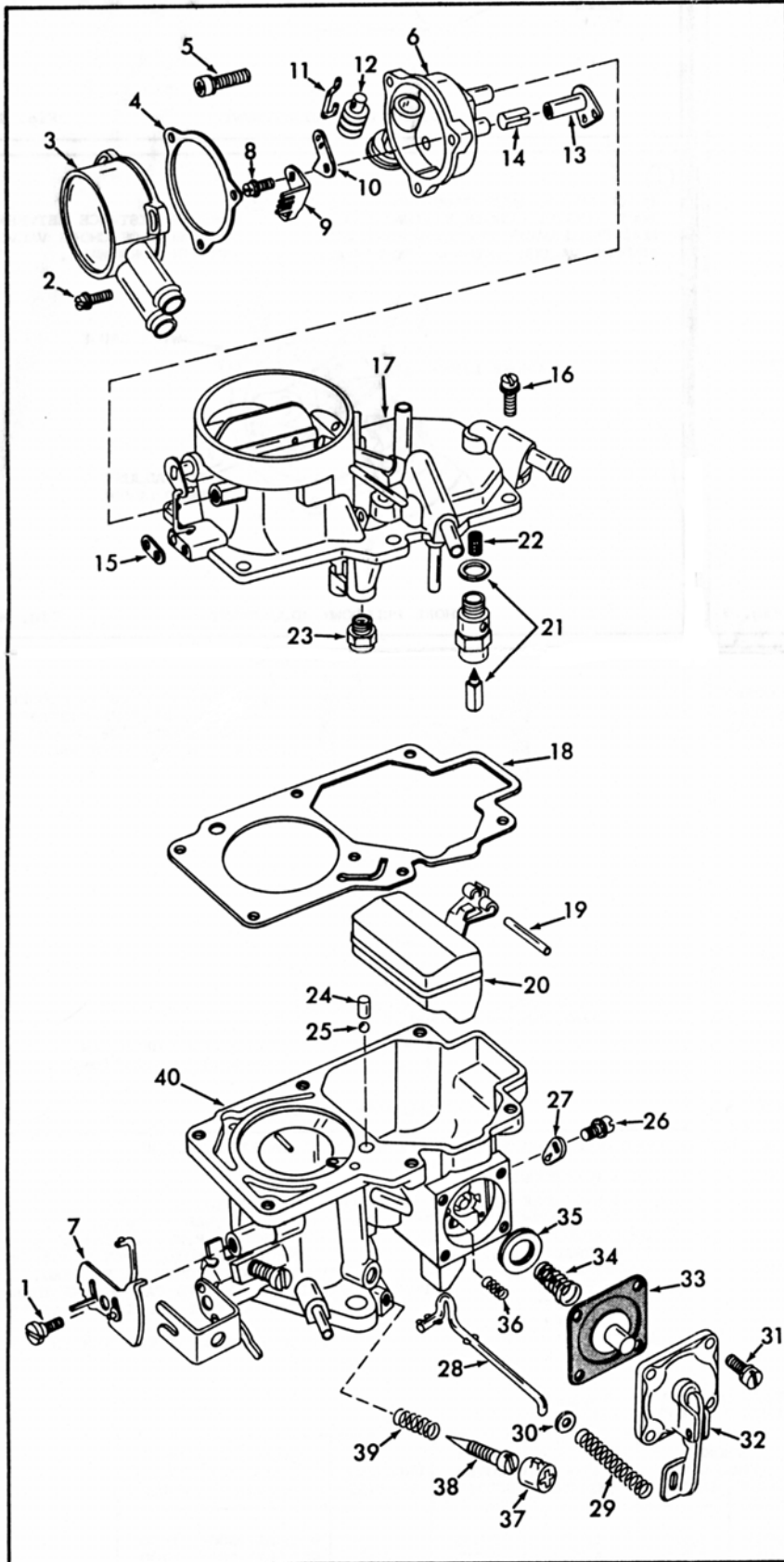
INSTRUCTION SHEET

FORD CARBURETOR - MODEL 1250

CAPRI-PINTO

GENERAL EXPLODED VIEW

THE GENERAL DESIGN AND PARTS SHOWN WILL VARY TO
INDIVIDUAL UNITS COVERED ON THIS INSTRUCTION SHEET



DISASSEMBLY

USE EXPLODED VIEW AS A GUIDE. THE NUMERICAL SEQUENCE MAY GENERALLY BE FOLLOWED TO DISASSEMBLE UNIT FAR ENOUGH TO PERMIT CLEANING AND INSPECTION. NOTE: BEING CAREFUL NOT TO REMOVE RETAINERS FROM LINKS ON CHOKE SHAFT OR FAST IDLE CAM. TO REMOVE PLASTIC LIMITER CAP (37), INSTALL SHEET METAL SCREW IN THE CENTER OF THE CAP AND TURN CLOCKWISE.

NOMENCLATURE

REF. NO.	REF. NO.
1. SCREW - FAST IDLE CAM	20. FLOAT & LEVER ASSY.
2. SCREW & LOCKWASHER (3) - CHOKE COVER	21. NEEDLE, SEAT & GASKET ASSEMBLY
3. CHOKE COVER ASSY.	22. SCREEN - FILTER
4. GASKET - CHOKE COVER	23. JET - MAIN
5. SCREW & LOCKWASHER (2) - CHOKE HOUSING	24. WEIGHT - PUMP BALL
6. CHOKE HOUSING ASSY.	25. BALL - PUMP DISC.
7. FAST IDLE CAM & LINK ASSY.	26. SCREW & LOCKWASHER - PUMP ROD LEVER
8. SCREW & LOCKWASHER - CHOKE STAT LEVER	27. LEVER - PUMP ROD
9. LEVER - CHOKE STAT	28. ROD - PUMP
10. LEVER - VACUUM PISTON LINK	29. SPRING - PUMP ROD
11. LINK - VACUUM PISTON	30. WASHER - PUMP ROD SPRING
12. PISTON - VACUUM	31. SCREW & LOCKWASHER (4) - PUMP COVER
13. SHAFT & LEVER - CHOKE HOUSING	32. PUMP COVER & LEVER ASSY.
14. BUSHING - CHOKE HOUSING SHAFT	33. PUMP DIAPHRAGM ASSY.
15. GASKET - CHOKE HOUSING	34. SPRING - PUMP RETURN
16. SCREW & LOCKWASHER (6) - BOWL COVER	35. VALVE - PUMP CHECK (1971)
17. BOWL COVER ASSY.	36. SPRING - PUMP VALVE
18. GASKET - BOWL COVER	37. CAP - IDLE LIMITER
19. PIN - FLOAT LEVER	38. NEEDLE - IDLE ADJ.
	39. SPRING - IDLE ADJ. NEEDLE
	40. FLOAT BOWL & LOWER BODY ASSEMBLY

CLEANING

CLEANING MUST BE DONE WITH CARBURETOR DISASSEMBLED. SOAK PARTS LONG ENOUGH TO SOFTEN AND REMOVE ALL FOREIGN MATERIAL. USE (1) A CARBURETOR CLEANING SOLVENT, (2) LACQUER THINNER OR (3) DENATURED ALCOHOL. MAKE CERTAIN THE THROTTLE BORES ARE FREE OF ALL CARBON AND VARNISH DEPOSITS. RINSE OFF IN SUITABLE SOLVENT. BLOW OUT ALL PASSAGES IN CASTINGS WITH COMPRESSED AIR AND CHECK CAREFULLY TO INSURE THOROUGH CLEANING OF OBSCURE AREAS. CAUTION: DO NOT SOAK PARTS CONTAINING RUBBER MATERIALS IN CLEANING SOLVENTS.

REASSEMBLY

REASSEMBLE IN REVERSE ORDER OF DISASSEMBLY. NOTE SPECIAL INSTRUCTIONS AND FOLLOW NUMERICAL OUTLINE IN MAKING ADJUSTMENTS.

SPECIAL INSTRUCTIONS

IDLE ADJUSTING NEEDLE (38) - TURN IN UNTIL SEATED, THEN BACK OUT 1-1/2 TURNS. (DO NOT INSTALL LIMITER CAP AT THIS TIME.)

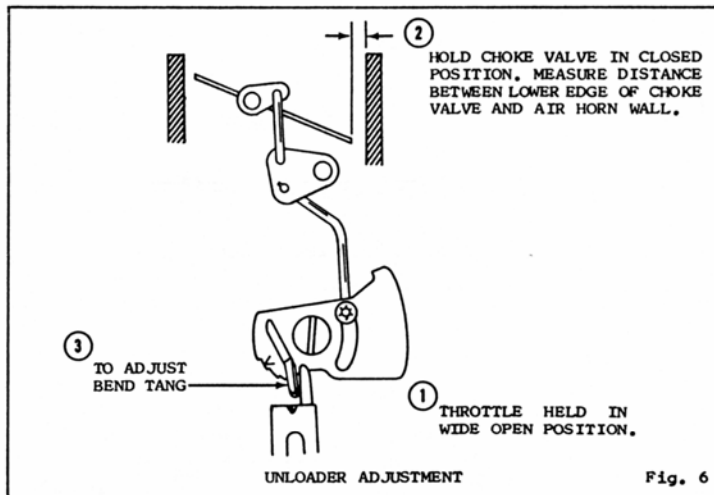
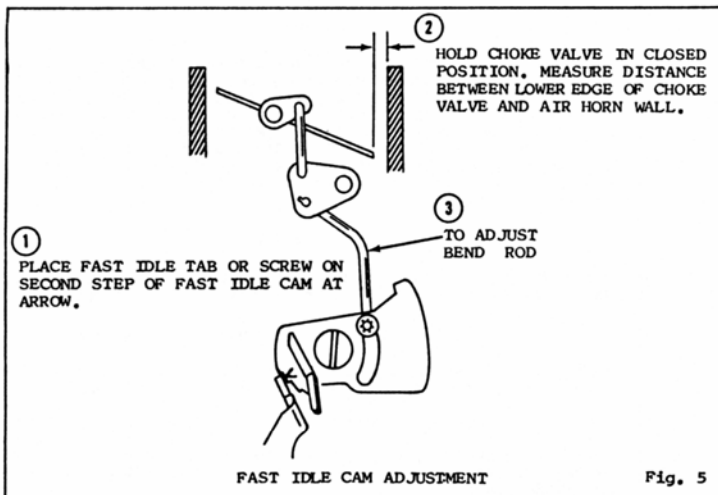
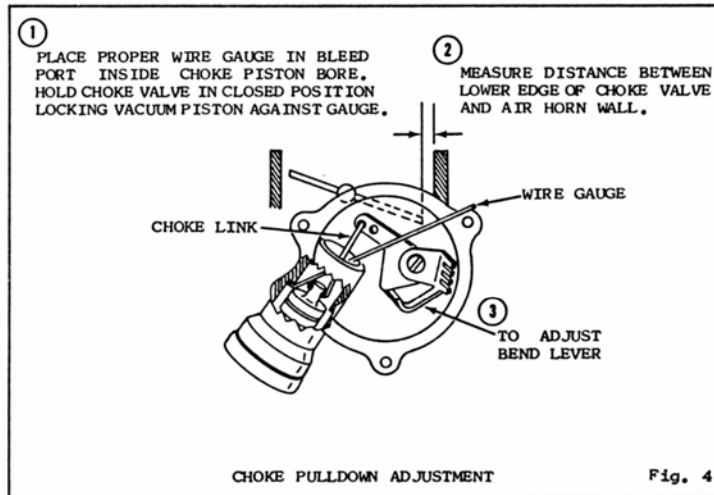
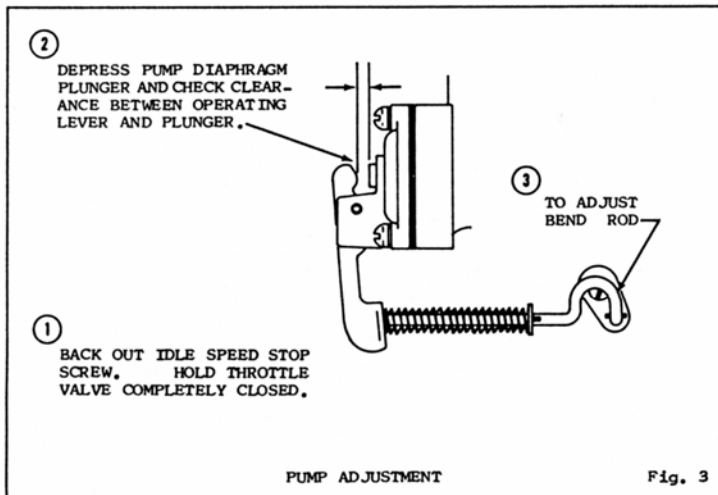
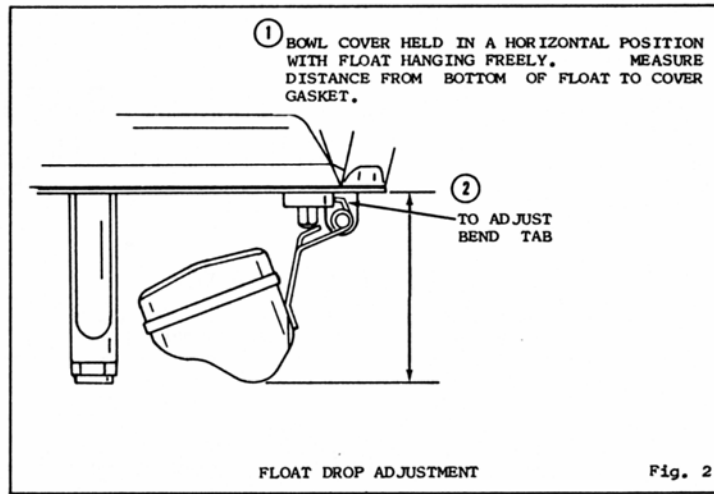
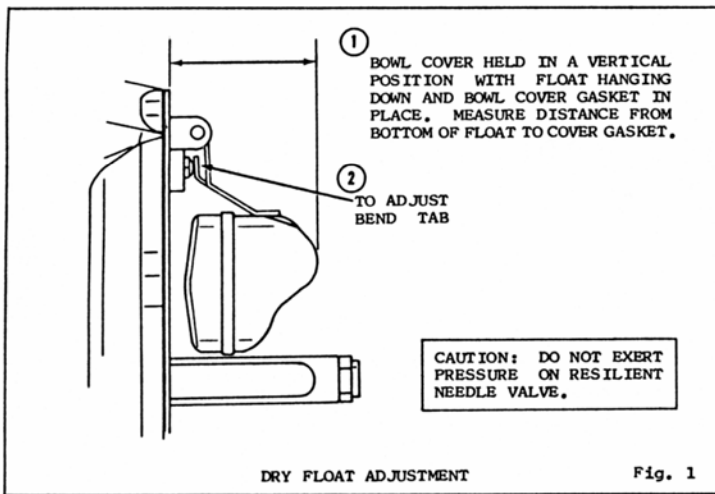
PUMP CHECK VALVE (35) - INSTALL WITH METAL SURFACE FACING OUT.

PUMP RETURN SPRING (34) - INSTALL WITH LARGE END FACING PUMP DIAPHRAGM (1971 MODELS). INSTALL WITH SMALL END FACING PUMP DIAPHRAGM (1972 MODELS).

VACUUM PISTON LINK (11) - INSTALL IN OUTER HOLE OF LINK LEVER (10)

CHOKE COVER (3) - INSTALL CHOKE SPRING HOOK IN CENTER SLOT OF LEVER, AND SET CHOKE COVER TO INDEX SETTING.

ADJUSTMENTS



USE FACTORY CAR MANUAL PROCEDURE FOR SETTING SLOW IDLE IF AVAILABLE, AND SPECIFICATIONS LISTED ON ENGINE DECAL.

SUPPLEMENT SLOW IDLE ADJUSTING PROCEDURE

1. SET IGNITION TIMING PER CAR FACTORY SPECIFICATIONS.
2. ENGINE AT OPERATING TEMPERATURE, CHOKE FULLY OPEN.
 - A. AUTOMATIC TRANSMISSION IN DRIVE.
 - B. HEADLIGHTS ON HIGH BEAM.
3. SET THROTTLE ADJUSTMENT AT SOLENOID TO SPECIFIED R.P.M. USING A TACHOMETER. NOTE: SOLENOID MUST BE ENERGIZED.
4. AIR CLEANER INSTALLED.
5. ADJUST IDLE MIXTURE NEEDLE TO OBTAIN THE HIGHEST R.P.M. AT THE LEANEST BEST IDLE SETTING.
6. READ JUST IDLE SPEED IF NECESSARY AT SOLENOID. NOTE: DISCONNECT SOLENOID THROTTLE POSITIONER AT CONNECTION THEN ADJUST THROTTLE STOP SCREW FOR LOWER R.P.M. TRANSMISSION IN NEUTRAL. (SEE DATA TABLE.) CONNECT SOLENOID, OPEN THROTTLE AND RELEASE, TRANSMISSION IN DRIVE RECHECK HIGHER IDLE SPEED.
7. AFTER COMPLETING THE ABOVE, INSTALL THE LIMITER CAP ON THE IDLE MIXTURE NEEDLE IN THE EXTREME COUNTERCLOCKWISE POSITION AGAINST THE LIMITER STOP.
8. PLACE FAST IDLE TAB ON V MARK STEP OF CAM AND ADJUST TAB TO SPECIFIED R.P.M.

ADJUSTMENT DATA TABLE

YEAR CARB. NO.	DRY FLOAT LEVEL	FLOAT DROP SETTING	PUMP ADJ.	CHOKE LINK POSITION	CHOKE PULLDOWN GAUGE	CHOKE PULLDOWN SETTING	FAST IDLE CAM SETTING	CHOKE COVER SETTING	UNLOADER SETTING	SLOW IDLE R.P.M.	FAST IDLE R.P.M.
1971											
711W-BDA	1 13/64"	1 13/32"	5/64"	OUTER HOLE	.031	1/8"	1/8"	INDEX	7/32"	900/400-500	1700
711W-BDB	1 13/64"	1 13/32"	1/16"	OUTER HOLE	.040	5/64"	5/64"	INDEX	7/32"	900/400-500	1700
1972											
721F-KFA	1 13/64"	1 13/32"	5/64"	OUTER HOLE	.036	5/64"	5/64"	INDEX	7/32"	900/500	1700
1973											
731F-KEA	1 13/64"	1 13/32"	3/32"	OUTER HOLE	.040	5/64"	3/32"	INDEX	7/32"	ENG./DECAL	1700