

INSTRUCTION SHEET

TILLOTSON CARBURETOR MODELS—KA, KC & KD MERCURY WMK

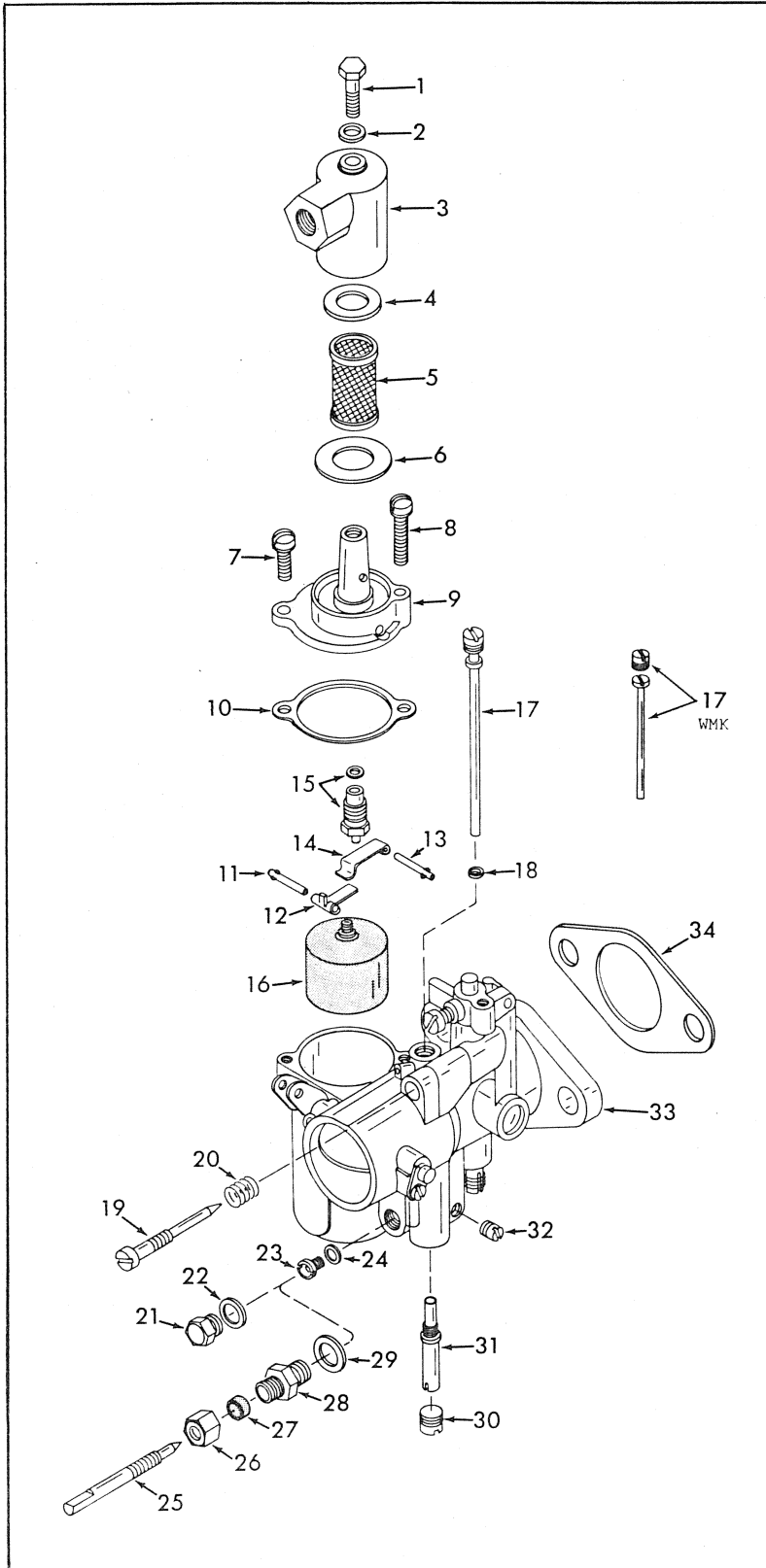
50-407-1

DISASSEMBLY

USE EXPLODED VIEW AS A GUIDE. THE NUMERICAL SEQUENCE MAY GENERALLY BE FOLLOWED TO DISASSEMBLE UNIT FAR ENOUGH TO PERMIT CLEANING AND INSPECTION.

GENERAL EXPLODED VIEW

THE GENERAL DESIGN AND PARTS SHOWN WILL VARY TO INDIVIDUAL UNITS COVERED ON THIS INSTRUCTION SHEET



NOMENCLATURE

REF. NO.	REF. NO.
1. SCREW - STRAINER COVER	17. IDLE TUBE
2. GASKET - STRAINER COVER SCREW	18. GASKET - IDLE TUBE
3. COVER - STRAINER	19. NEEDLE - IDLE ADJUSTING
4. GASKET (SMALL) - STRAINER COVER	20. SPRING - IDLE ADJ. NEEDLE
5. SCREEN - STRAINER	21. PLUG SCREW - MAIN PASSAGE
6. GASKET (LARGE) - STRAINER COVER	22. GASKET - PLUG SCREW
7. SCREW & LOCKWASHER (SHORT) - BOWL COVER	23. JET - MAIN
8. SCREW & LOCKWASHER (LONG) - BOWL COVER	24. GASKET - MAIN JET
9. COVER - BOWL	25. NEEDLE - HIGH SPEED
10. GASKET - BOWL COVER	26. NUT - HIGH SPEED NEEDLE
11. PIN - FLOAT LEVER	27. PACKING - HIGH SPEED NEEDLE
12. FLOAT LEVER - (PRIMARY)	28. GLAND - HIGH SPEED NEEDLE
13. PIN - FLOAT LEVER	29. GASKET - GLAND
14. FLOAT LEVER - (SECONDARY)	30. PLUG SCREW - MAIN NOZZLE
15. NEEDLE SEAT AND GASKET ASSEMBLY	31. NOZZLE - MAIN
16. FLOAT ASSEMBLY	32. PLUG - PASSAGE
	33. BODY - MAIN CARBURETOR
	34. GASKET - FLANGE

CLEANING

CLEANING MUST BE DONE WITH CARBURETOR DISASSEMBLED. SOAK PARTS LONG ENOUGH TO SOFTEN AND REMOVE ALL FOREIGN MATERIAL. USE (1) A CARBURETOR CLEANING SOLVENT, (2) LAQUER THINNER, OR (3) DENATURATED ALCOHOL. MAKE CERTAIN THE THROTTLE BORE IS FREE OF ALL CARBON AND VARNISH DEPOSITS. RINSE OFF IN SUITABLE SOLVENT. BLOW OUT ALL PASSAGES IN CASTINGS WITH COMPRESSED AIR AND CHECK CAREFULLY TO INSURE THOROUGH CLEANING OF OBSCURE AREAS. **CAUTION:** DO NOT SOAK NON METAL PARTS IN CLEANING SOLVENTS.

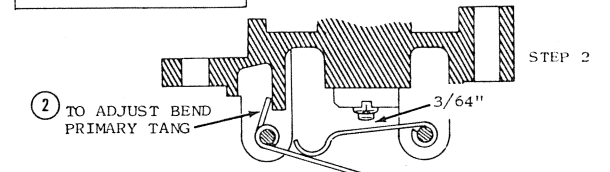
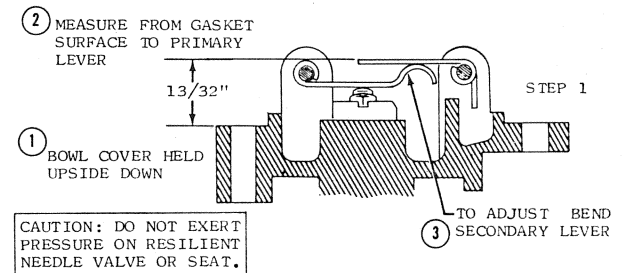
REASSEMBLY

REASSEMBLE IN REVERSE ORDER OF DISASSEMBLY. NOTE SPECIAL INSTRUCTIONS AND ADJUSTMENTS.

SPECIAL INSTRUCTIONS

IDLE NEEDLE INSTALLATION - TURN NEEDLE (19) IN LIGHTLY UNTIL SEATED, THEN BACK OUT 3/4 TURN.

HIGH SPEED NEEDLE INSTALLATION - TURN NEEDLE (25) IN LIGHTLY UNTIL SEATED, THEN BACK OUT 3/4 TURN.



1 PRIMARY & SECONDARY LEVERS IN OPEN POSITION, CHECK CLEARANCE BETWEEN SEATED NEEDLE AND SECONDARY LEVER. CLEARANCE SHOULD BE APPROXIMATELY 3/64".

FLOAT LEVER ADJUSTMENTS

IDLE ADJUSTMENT - ENGINE AT OPERATING TEMPERATURE, REDUCE ENGINE SPEED TO IDLE, ADJUST IDLE MIXTURE SCREW TO OBTAIN A SMOOTH STEADY IDLE.

HIGH SPEED ADJUSTMENT - ENGINE RUNNING AT A CONSTANT HALF OPEN THROTTLE SPEED UNDER LOAD. ADJUST HIGH SPEED SCREW TO OBTAIN MAXIMUM ENGINE R.P.M.