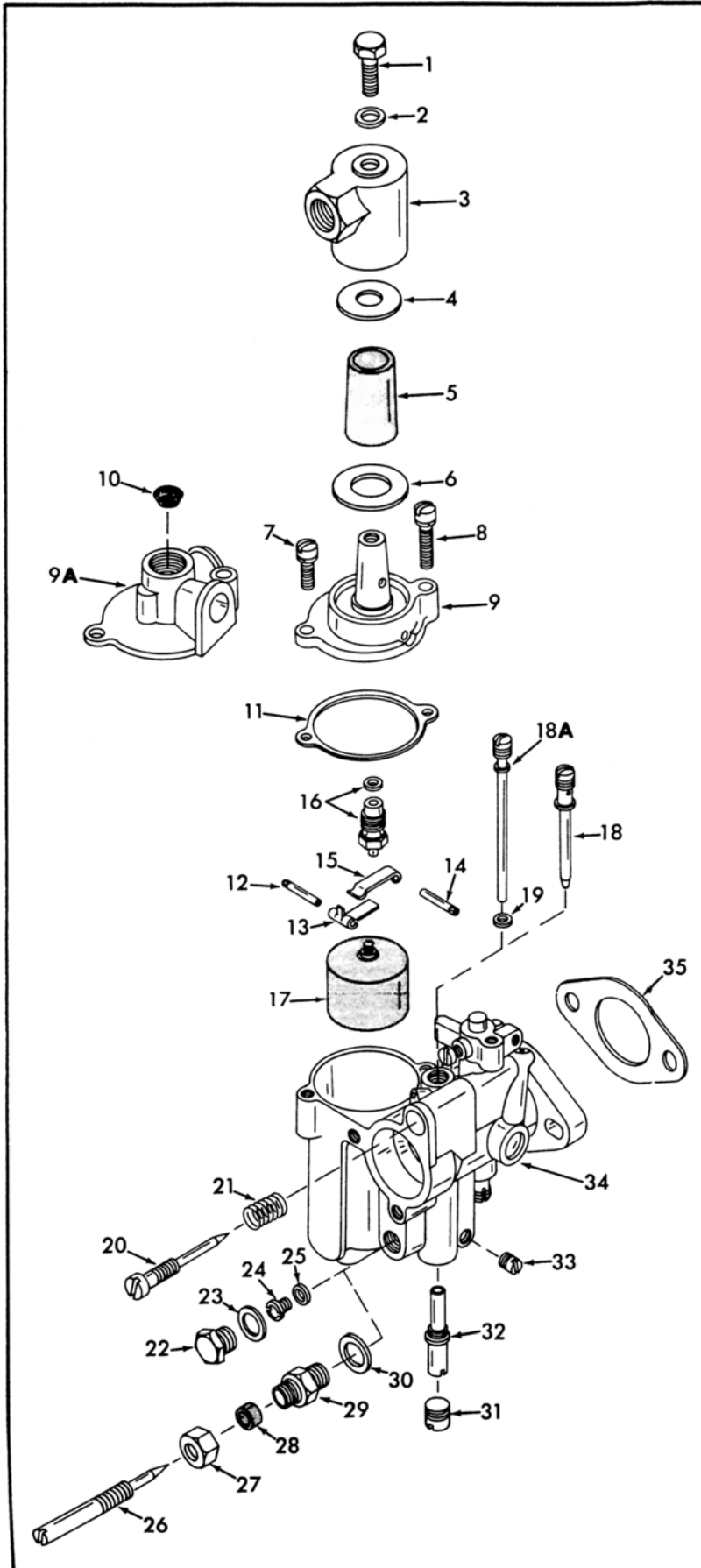


INSTRUCTION SHEET

TILLOTSON CARBURETOR MODELS AJ, KB

GENERAL EXPLODED VIEW

THE GENERAL DESIGN AND PARTS SHOWN WILL VARY TO INDIVIDUAL UNITS COVERED ON THIS INSTRUCTION SHEET



DISASSEMBLY

USE EXPLODED VIEW AS A GUIDE. THE NUMERICAL SEQUENCE MAY GENERALLY BE FOLLOWED TO DISASSEMBLE UNIT FAR ENOUGH TO PERMIT CLEANING AND INSPECTION.

NOMENCLATURE

REF. NO.	REF. NO.
1. SCREW - STRAINER COVER	19. GASKET - IDLE TUBE (KB)
2. GASKET - COVER SCREW	20. NEEDLE - IDLE ADJ.
3. COVER - STRAINER	21. SPRING - IDLE ADJ. NEEDLE
4. GASKET (SMALL) - STRAINER COVER	22. PLUG SCREW - MAIN PASSAGE
5. ELEMENT - STRAINER	23. GASKET - PLUG SCREW COVER
6. GASKET (LARGE) - STRAINER COVER	24. JET - MAIN (AJ-KB)
7. SCREW & LOCKWASHER (SHORT)-BOWL COVER	25. GASKET - MAIN JET (AJ-KB)
8. SCREW & LOCKWASHER (LONG)-BOWL COVER	26. NEEDLE - HIGH SPEED ADJUSTING (AJ)
9. COVER - BOWL (AJ-KB)	27. NUT - HIGH SPEED NEEDLE PACKING (AJ)
10. SCREEN - BOWL FILTER (AJ)	28. PACKING - HIGH SPEED NEEDLE (AJ)
11. GASKET - BOWL COVER	29. GLAND - HIGH SPEED NEEDLE (AJ)
12. PIN - FLOAT LEVER	30. GASKET - GLAND (AJ)
13. FLOAT LEVER - (PRIMARY)	31. PLUG SCREW - MAIN NOZZLE
14. PIN - FLOAT LEVER	32. NOZZLE - MAIN
15. FLOAT LEVER - (SECONDARY)	33. PLUG - PASSAGE
16. NEEDLE, SEAT & GASKET ASSEMBLY	34. BODY - MAIN CARBURETOR
17. FLOAT ASSEMBLY	35. GASKET - FLANGE
18. IDLE TUBE (AJ)	
18A. IDLE TUBE (KB)	

CLEANING

CLEANING MUST BE DONE WITH CARBURETOR DISASSEMBLED. SOAK PARTS LONG ENOUGH TO SOFTEN AND REMOVE ALL FOREIGN MATERIAL. USE (1) A CARBURETOR CLEANING SOLVENT, (2) LACQUER THINNER, OR (3) DENATURATED ALCOHOL. MAKE CERTAIN THE THROTTLE BORE IS FREE OF ALL CARBON AND VARNISH DEPOSITS. RINSE OFF IN SUITABLE SOLVENT. BLOW OUT ALL PASSAGES IN CASTINGS WITH COMPRESSED AIR AND CHECK CAREFULLY TO INSURE THOROUGH CLEANING OF OBSCURE AREAS. **CAUTION:** DO NOT SOAK NON METAL PARTS IN CLEANING SOLVENTS.

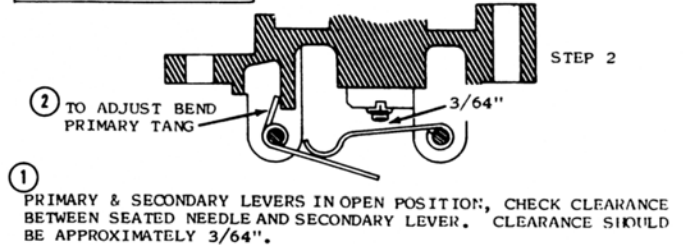
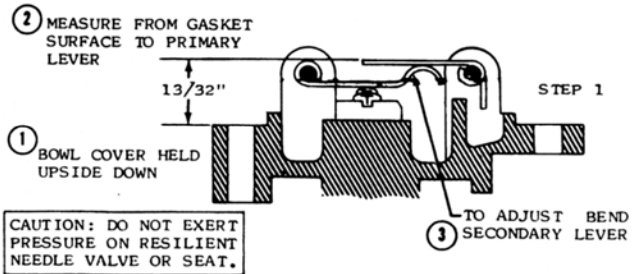
REASSEMBLY

REASSEMBLE IN REVERSE ORDER OF DISASSEMBLY. NOTE SPECIAL INSTRUCTIONS AND ADJUSTMENTS.

SPECIAL INSTRUCTIONS

IDLE NEEDLE INSTALLATION - TURN NEEDLE (20) IN LIGHTLY UNTIL SEATED, THEN BACK OUT 3/4 TURN.

HIGH SPEED NEEDLE INSTALLATION - TURN NEEDLE (26) IN LIGHTLY UNTIL SEATED, THEN BACK OUT 3/4 TURN.



FLOAT LEVER ADJUSTMENTS

IDLE ADJUSTMENT - ENGINE AT OPERATING TEMPERATURE, REDUCE ENGINE SPEED TO IDLE, ADJUST IDLE MIXTURE SCREW TO OBTAIN A SMOOTH STEADY IDLE.

HIGH SPEED ADJUSTMENT - ENGINE RUNNING AT A CONSTANT HALF OPEN THROTTLE SPEED UNDER LOAD ADJUST HIGH SPEED SCREW TO OBTAIN MAXIMUM ENGINE R.P.M.